

**TABLE OF CONTENTS**

|                                                     |    |                                                |    |
|-----------------------------------------------------|----|------------------------------------------------|----|
| <b>Anodes</b> .....                                 | 15 | <b>Outboard Reman</b> .....                    | 6  |
| <b>Boating Accessories</b> .....                    | 71 | Outboard Powerheads .....                      | 6  |
| Battery Changing Kit .....                          | 72 | <b>Propellers</b> .....                        | 60 |
| Boat Care Product and Accessories .....             | 71 | M-Series Propellers .....                      | 62 |
| <b>Fuel / Oil Tanks and Fuel Lines</b> .....        | 17 | Prop Hardware / Accessories .....              | 62 |
| <b>Inflatable Boats</b> .....                       | 64 | Spitfire 25-30 HP .....                        | 60 |
| Adventure Series .....                              | 67 | Spitfire 40 Bigfoot - 125 HP .....             | 60 |
| Air Deck Deluxe .....                               | 66 | Spitfire 40-60 HP .....                        | 60 |
| Air Deck Fishing .....                              | 66 | Thunderbolt .....                              | 61 |
| Dinghy Series .....                                 | 64 | Thunderbolt - For Volvo Penta IPS Drives ..... | 61 |
| Heavy Duty Series .....                             | 68 | <b>Racing</b> .....                            | 7  |
| Inflatable Accessories .....                        | 68 | <b>Rigging</b> .....                           | 48 |
| Ocean Runner Series .....                           | 67 | Electrical .....                               | 53 |
| Sport Series .....                                  | 65 | Instrumentation - Analog .....                 | 48 |
| Ultra Light .....                                   | 64 | MP Alert .....                                 | 56 |
| <b>MerCruiser</b> .....                             | 8  | Remote Controls .....                          | 57 |
| Kits .....                                          | 11 | Steering - Rotary System .....                 | 53 |
| Longblock Assembly .....                            | 10 | Steering -Hydraulic .....                      | 50 |
| PCM Modules .....                                   | 8  | Theft Deterrent System .....                   | 55 |
| <b>MerCruiser Reman</b> .....                       | 13 | Tie Bars .....                                 | 53 |
| Longblock Assembly .....                            | 13 | <b>SmartCraft</b> .....                        | 24 |
| <b>Oils/Lubes/Fuel/Engine Care and Paints</b> ..... | 20 | Bezels .....                                   | 46 |
| Paints .....                                        | 23 | Connecting Hardware .....                      | 47 |
| <b>Outboard</b> .....                               | 2  | Depth/Temp Sensors .....                       | 46 |
| Kits and Miscellaneous .....                        | 4  | Rigging Kits .....                             | 24 |
| Power Trim .....                                    | 3  | SC 100 System Gauge W/O Bezel .....            | 38 |
| Spark Plugs .....                                   | 2  | SC 100 System Gauges .....                     | 31 |
| SportJet .....                                      | 4  | SC 1000 System Gauges .....                    | 27 |
| Tiller Handle Conversion Kits .....                 | 3  | Tach / Speedometer Rigging Kits .....          | 44 |
| Tiller Handle Systems .....                         | 2  | VesselView / MercMonitor .....                 | 25 |

**OUTBOARD**

**SPARK PLUGS**

**SPARK PLUG**



**33-8M0057936**

NGK, ZFR5F  
Priced individually, sold @ multiples of 4

**SPARK PLUG**



**33-8M0058932**

NGK ITR4A15  
25 spark plugs in one shop package.  
Priced individually, sold @ multiples of 25

**33-8M0058933**

NGK IZFR5G  
25 spark plugs in one shop package.  
Priced individually, sold @ multiples of 25

**33-8M0058934**

NGK ILFR6GE  
25 spark plugs in one shop package.  
Priced individually, sold @ multiples of 25

**33-8M0058935**

NGK IZFR5J  
25 spark plugs in one shop package.  
Priced individually, sold @ multiples of 25

**33-8M0058936**

NGK IZFR6J  
25 spark plugs in one shop package.  
Priced individually, sold @ multiples of 25

**TILLER HANDLE SYSTEMS**

**CYLINDER- POWER STEERING - BIG TILLER**

Image not Available.

**8M0058944**

This cylinder was released with a special bent arm that provides more clearance and is longer than the others. It is unique to the Big Tiller Power Steering . Used in complete Kit 8M0061721. 150 - 4S  
150 HP 4 Stroke Big Tiller

**MECHANICAL TILLER WITH P/S**



**8M0061721**

Performance at your fingertips. The Big Tiller is a completely new design that incorporates new features and performance improvements. Such things as easy access to Shift and Throttle handles, trim button at the end of the handle, new ergonomic designs for easy operation, improved friction adjustments, and many more enhancements.  
Includes finger tip control and a hydraulic locking feature that eliminates torque created by the engine and prop. Provides safe and effortless operation and opens up the entire boat for cargo and fishing flexibility. A new RPM adjustment switch (Troll Control) is included as standard equipment on this model. Optional LED light and switch is also available as an option on this model. (897978T02)  
Big Tiller kit (Power Steering) with extra length and bent arm to attach to the new 150 4 Stroke engine

**TILLER HANDLE KIT**



**828813A31**

Black handle.  
Fits various Mercury/Mariner 40/45/50 hp. 4-Stroke outboards with Bigfoot gearcase. See application chart for specific engine models. A gray handled kit is no longer available for Mariner.

**TILLER HANDLE KIT**



**896648A09**

Black handle. Converts remote models to a tiller handle control. Fits the 75/90/115 DFI, 1.5L OptiMax Outboard, Model Year 2006 and newer.

**TILLER HANDLE CONVERSION KIT**



**8M0051061**

This kit converts an MRC (manual remote control) model to a tiller handle operation. Fits the 25-30 Hp EFI FourStroke Outboard, serial number 0R106999 & above.

**TILLER HANDLE CONVERSION KITS**

**TILLER HANDLE CONVERSION KIT**



**8M0051059**

Converts an ERC (electric remote model) to an EH (electric tiller model). Power trim models require additional kit 87-898101A02 to relocate trim switch from the cowl to the handle. Fits the 15 hp. FourStroke (351cc) outboard, serial number 0R235949 and above.

**TILLER HANDLE CONVERSION KIT**



**8M0051063**

Converts an ERC to EH model. Fits the 9.9 hp. FourStroke outboard with EPA calibrations and requiring Mercury style ended throttle/shift cables. Serial Numbers USA-0R192772 & newer, BEL-0P513330 & newer.

**TILLER HANDLE CONVERSION KIT**



**8M0051060**

Converts an ERC (electric remote model) to an EH (electric tiller model). Power trim models require additional kit 87-898101A02 to relocate trim switch from the cowl to the handle. Fits the 20 hp. FourStroke (351cc) outboard, serial number 0R235168 and above.

**POWER TRIM**

**POWER TRIM SWITCH KIT**



**87-8M0042301**

Rocker switch style with bullet connectors. Cowl mounted. Connects directly to engine harness. Fits Force 40-120 hp. Outboards.

# OUTBOARD

## POWER TRIM KIT



**8M0055008**

Single ram integral trim with cowl mounted trim switch.  
Fits Mercury/Mariner 40 hp. (3 cyl.) 4-Stroke Bigfoot, 40 hp. (4 cyl., 996 cc.) 4-Stroke Bigfoot, 50/60 hp. (4 cyl., 996 cc.) 4-Stroke, and 60 (3 cyl.) 2 cycle Bigfoot outboards. See application chart for specific engine models.

## POWER TRIM & TILT KIT



**8M0055012**

Fits Force 90/120 hp. outboards (USA 0E093700-0E173408).

## SPORT JET

### JET PUMP - OUTBOARD

Image not Available.

**67-879349001**

Jet Pump for 115 Opti Engine ( 80 HP)  
Use on OptiMax Outboard Engines 1.5L

**67-879349002**

Jet Pump for 150Opti Engine ( 110 HP)  
Use on OptiMax Outboard Engines V6

**67-8M0064433**

Jet Pump for 150 4 Stroke Engine ( 110 HP)  
Use on 150 4 Stroke Outboard Engine

## KITS AND MISCELLANEOUS

### FLUSHING ATTACHMENT



**8M0057047**

For static flush only. Furnished with each engine.  
Fits the F4-5-6hp. FourStroke outboard, 0R411838 and above.

### 5 INCH EXTENSION KIT



**8M0060269**

Converts 20 inch (508mm) L model to a 25 inch (635mm) XL model.  
Fits the Mercury/Mariner F150 hp. EFI FourStroke 4 cylinder outboard.

### REPLACEMENT SKEG

Image not Available.

**8M0052924**

Precision die cast 360XK alloy for stronger, more uniform welds.  
Fits the Verado and 3.0L gearhousings with a 5.44 inch diameter torpedo.

### REPLACEMENT SKEG



**8M0060147**

Precision die cast 360XK alloy for stronger, more uniform welds.  
Fits the Mercury/Mariner F150 hp. EFI FourStroke 4 cylinder outboard.

**RIGGING TUBE KIT**



**32-8M0062693**

Rigging Tube kit includes 5 ft length (2 in. dia. x 2.3 threads per inch) tube that screws into the fitting coming out of the Verado. Includes new grommet 8M0061160 that is used when installing rigging tubes. Remove existing grommet from cowl and replace with this grommet.  
Used on 150 4 Stroke engine only

**IMPELLER KIT**



**47-8M0061756**

A collection of various water impeller and water pump replacement parts. These feature the best impeller material and impeller to hub bonding in the industry, display packaged to raise customer awareness. Impellers should be inspected for replacement once per year or every 100 hours of operation.

Kit contains:

- (2) 47- 43026Q02 Impeller
- (2) 47- 43026Q06 Impeller Repair Kit
- (1) 47- 85089Q 4 Impeller Repair Kit
- (2) 47- 42038Q02 Impeller
- (2) 47- 96148Q 8 Water Pump Upper Repair Kit
- (2) 47- 89984Q 5 Impeller Repair Kit
- (2) 47- 59362Q01 Impeller Repair Kit
- (1) Display Placard
- (1) Suggested plan-o-gram for product placement, product applications are displayed on the back of the point-of-sale packaging.

**HOSE CLAMP**



**54-888988019**

22.9 mm diameter stainless steel stepless ear clamp.  
Used on the new low permeation primer bulbs to provide a tight seal between the bulb and the valve.

## OUTBOARD REMAN

### OUTBOARD POWERHEADS

#### POWERHEAD OUTBOARD



##### 878365R00

Remanufactured Outboard Powerhead.  
Replaces 2000 - 2001 Mercury or Mariner 135 / 150 horsepower 2.0 Liter V-6 engines without oil injection motion sensor hole in the block. ( s/n 0G960500-0T178499).

#### OUTBOARD POWERHEAD



##### 812817R97

Remanufactured outboard powerhead, both Carbureted and Electronic Fuel Injection technologies.  
Fits the Mercury/Mariner V-150 XR6 (2.5L) outboard (0D082000-0D284287), and the V-175 Carbureted and EFI (2.5L) outboards (0D082000-0G960499).

#### POWERHEAD OUTBOARD

##### 823434R97

Remanufactured outboard powerhead, both Carbureted and Electronic Fuel Injection technologies.  
Fits the Mercury/Mariner V-150 EFI (2.5L) outboard, 0D182000-0G960499, the V-150 Carbureted (2.5L) outboard (0G760300-0G960499), and fits the V-150 XR6/Tracker 150 EFI (2.5L) outboard (0D284788-0G960499).

#### POWERHEAD OUTBOARD



##### 804545R99

Remanufactured outboard powerhead, Direct Fuel Injection technology.  
Fits the V-135/150 Optimax (2.5L) outboard, 0G590000-0G960499.

#### POWERHEAD OUTBOARD



##### 812815R97

Remanufactured Outboard Powerhead.  
Replaces 1990 and newer Mercury or Mariner 135/150 horsepower 2.0 Liter V-6 engines with horizontal reeds. (s/n 0C239553 - 0G960499) not for use with XR2 2.5L engines in this serial range. Note: Block includes a fitting access hole for an oil-injection motion sensor.

#### POWERHEAD OUTBOARD



##### 823291R94

Remanufactured outboard powerhead, Carbureted technology.  
Fits the Mercury/Mariner V-225 Carbureted (3.0L) outboard, 0D280813-0G129221. These engines utilize an 8 tooth spline crankshaft.

#### POWERHEAD OUTBOARD

##### 809794R97

Remanufactured outboard powerhead, both Carbureted and Electronic Fuel Injection technologies utilizing a mechanical oil pump.  
Fits the Mercury/Mariner V-225 Carbureted (2.0L) outboard (0G129222-0T408999), and the V-225/250 EFI (3.0L) outboards (0G129222-0G960499). These engines have a 13 tooth spline crankshaft.

##### 61-841017R51

Remanufactured outboard powerhead, Direct Fuel Injection technology.  
Fits the Mercury/Mariner V-250 XS, DFI (3.0L) outboard (0T651945 and above), and also fits the V-250 Pro XS, DFI (3.0L) outboard (1B426561 and above).

##### 883894R04

Remanufactured outboard powerhead, Electronic Fuel Injection technology utilizing an electric oil pump.  
Fits the Mercury/Mariner V-250 EFI (3.0L) outboard, 0T409000 and above.

##### 804800R00

Remanufactured outboard powerhead, Electronic Fuel Injection technology utilizing a mechanical oil pump.  
Fits the Mercury/Mariner V-250 EFI (3.0L) outboard, 0G960500-0T408999, using a mechanical oil pump.

**RACING**

**NXT1 TRANSOM PLATE ASSEMBLY**

Image not Available.

**6-6B28002HH**

Complete driveline version only, no transmission  
For use with NXT1 LS stern drives and NXT1 transmission

**FUEL FILTER ASSEMBLY**



**35-8M0050833**

Includes fuel filter, hose and adapter fitting.  
Used on all Mercury Racing EFI engines.

**ELECTRIC FUEL PUMP**



**8M8026000**

Bosch, pump only, use with 39 PSI regulator.  
Mercury Racing 2.5 EFI outboards.

**SINGLE EXTENSION (WING) PLATE**



**8M0051209**

Bolt on inner wing plate for driveline or close couple engine installations. Mounting hardware is shipped with the engines.  
Racing MerCruiser engines with universal engine mounts.

**SEAL INSTALLATION TOOL**



**91-8M0059911**

**ZERO EFFORT TRIPLE ENGINE DIGITAL RIGGING KIT**



**8M8025983**

Includes helm board, key switch, lanyard, valve block, various electrical harnesses and other rigging parts.  
For use with Race 565 or QC4v MerCruiser product.

**TRIM HOSE EXTENSION KIT**



**8M8027354**

Set of two 96 inch hoses with 90 degree bend at one end.  
For use with the common M series transom plates and M8 or NXT1 stern drives.



**MERCUISER**

**PCM MODULES**

**PCM MODULE**



**879172T80**

PCM 0802  
Fits 2008 MCM 5.0L MPI Bravo Axius w/ closed cooling (s/n 1A300000-1A343327)

**879194T17**

PCM 0802  
Fits 2009 and newer MCM 377 Mag Bravo Axius w/ closed cooling (s/n 1A345480-1A345492, 1A345766-1A345767, 1A346790 & up)

**879194T73**

PCM 0802  
Fits 2008 MCM 377 Mag Axius engines with closed cooling (s/n 1A300000-1A343327)

**879194T99**

PCM 0802  
Fits 2009 and newer MCM 5.0L MPI Bravo Axius w/ closed cooling (s/n 1A343328 and up)

**ECM (ELECTRONIC CONTROL MODULE)**



**865831T08**

Fits 2007-2008 MCM 4.3L MPI Alpha with closed cooling (s/n 1A063240-1A343327).

**865833T07**

Fits 2007-2008 MCM 4.3L MPI Bravo with closed cooling (s/n 1A063240-1A343327).

**PCM MODULE**



**879288T91**

PCM 0802  
Fits 2009 and newer MCM 350 Mag MPI Bravo Axius w/ closed cooling (s/n 1A343328 and up)

**879355T82**

PCM 0802  
Fits 2009 MCM 377 Mag Bravo Axius w/ closed cooling (s/n 1A343328-1A345479, 1A345493-1A345765, 1A345768-1A346789)

**PCM MODULE**



**8M0047353**

PCM 0903  
Fits 2008 and newer MCM 5.0L MPI Bravo EC Axius engines w/ closed cooling (s/n 1A300000 & up)

**8M0047355**

PCM 0903  
Fits 2008 and newer MCM 350 Mag MPI Bravo EC Axius engines w/ closed cooling (s/n 1A300000 & up)

**8M0052744**

PCM 0903  
Fits 2008 and newer MCM 377 Mag MPI Bravo EC Axius engines w/ closed cooling (s/n 1A300000 & up)

**78-8M0059259**

PCM 0903  
Fits 2011 and newer MIE 6.2 MPI DTS EC engines w/ closed cooling (s/n 1A092818 & up)



**PCM MODULE**



**78-8M0059270**

PCM 0802  
Fits 2009 and newer MCM 5.0L MPI Bravo DTS w/ closed cooling (s/n 1A343328 and up)

**78-8M0059272**

PCM 0802  
Fits 2009 and newer MCM 350 Mag MPI Bravo DTS w/ closed cooling (s/n 1A343328 and up)

**78-8M0059274**

PCM 0802  
Fits 2009 and newer MCM 377 Mag Bravo DTS w/ closed cooling (s/n 1A345480-1A345492, 1A345766-1A345767, 1A346790 & up)

**PCM MODULE**



**78-8M0059346**

PCM 0903  
Fits 2011 and newer MCM 3.0L MPI EC engines w/ closed cooling (s/n 1A648623 & up)

**78-8M0059348**

PCM 0905  
Fits 2011 and newer MCM 4.3L MPI EC Alpha with closed cooling (s/n 1A648623 & up)

**78-8M0059350**

PCM 0905  
Fits 2011 and newer MCM 4.3L MPI EC Bravo with closed cooling (s/n 1A648623 & up)

**78-8M0059352**

PCM 0903  
Fits 2011 and newer MCM 5.0L MPI Alpha EC engines w/ closed cooling (s/n 1A648623 & up)

**78-8M0059354**

PCM 0903  
Fits 2011 and newer MCM 5.0L MPI Bravo EC engines w/ closed cooling (s/n 1A648623 & up)

**78-8M0059366**

PCM 0903  
Fits 2011 and newer MCM 5.0L MPI Bravo DTS EC engines w/ closed cooling (s/n 1A648623 & up)

**78-8M0059356**

PCM 0903  
Fits 2011 and newer MCM 350 Mag MPI Alpha EC engines w/ closed cooling (s/n 1A648623 & up)

**78-8M0059358**

PCM 0903  
Fits 2011 and newer MCM 350 Mag MPI Bravo EC engines w/ closed cooling (s/n 1A648622 & up)

**78-8M0059368**

PCM 0903  
Fits 2011 and newer MCM 350 Mag MPI Bravo DTS EC engines w/ closed cooling (s/n 1A648623 & up)

**78-8M0059360**

PCM 0903  
Fits 2011 and newer MIE 5.7 MPI EC engines w/ closed cooling (s/n 1A092818 & up)

**78-8M0059248**

PCM 0903  
Fits 2011 and newer MIE 5.7 MPI DTS EC engines w/ closed cooling (s/n 1A092818 & up)

**78-8M0059363**

PCM 0903  
Fits 2011 and newer MCM 377 Mag MPI Bravo EC engines w/ closed cooling (s/n 1A648623 & up)

**78-8M0059257**

PCM 0903  
Fits 2011 and newer MCM 377 Mag MPI Bravo DTS EC engines w/ closed cooling (s/n 1A648623 & up)

**78-8M0059364**

PCM 0903  
Fits 2011 and newer MIE 6.2 MPI EC engines w/ closed cooling (s/n 1A092818 & up)

**ECM (ELECTRONIC CONTROL MODULE)**



**865846T02**

Fits 2004 MCM MX 6.2 MPI Bravo with closed cooling (s/n 0W029411-0W309999).

**8M0064759**

Fits 2009 and newer MCM 4.3L MPI Bravo with closed cooling (s/n 1A343328 and up).

## LONGBLOCK ASSEMBLY

### LONGBLOCK ASSEMBLY



#### 864626A01

Brand \*NEW\* Longblock  
GM 4 cyl., 3.0 Litre 181 cid I/L 4  
Replaces 1990-1997 3.0LX engines (s/n 0C856559-ck999999). Also 1998 and newer 3.0L carb engines (0L010042 and up).

#### 864626A02

Brand \*NEW\* Longblock  
GM 4 cyl., 3.0 Litre 181 cid I/L 4  
Replaces 2008 & newer MCM 3.0L MPI engines.

### LONGBLOCK ASSEMBLY



#### 863660A 2

Brand \*NEW\* Longblock  
GM 8 Cyl., 5.0 Litre Gen+ V8  
Replaces 2002 and newer GM 5.0L MPI marine engines with CPS (Crank Position Sensor). (SN# 0M300000 and up)

### LONGBLOCK ASSEMBLY



#### 863661A 2

Brand \*NEW\* Longblock  
GM V-8, 350 cid (Gen +)  
Replaces 2001-2004 MCM 350 Mag MPI engines (s/n 0M300000-0W309999) & 2001-2004 MIE 350 Mag MPI engines (s/n 0M300000-0W389999).

#### 800-866138A03

Brand \*NEW\* Longblock  
GM 8 Cyl., 5.7 Litre Gen+ 350 V-8  
Replaces 2005 & newer MCM/MIE 350 Mag & 5.7L MPI engines (s/n 0W310000 and up)

## LONGBLOCK ASSEMBLY



#### 864651A01

Brand \*NEW\* Longblock  
GM 8 Cyl., 5.0 Litre Gen+ 305 V8  
Replaces 1998 and newer 5.0L Carbureted or Throttle Body Injected EFI sterndrive engines. It also replaces the 5.0L Multi-Port Injected MPI engines without CPS (Crank Position Sensor). Will NOT service a 5.0L engine with a CPS (Crank Position Sensor).

## LONGBLOCK ASSEMBLY



#### 864652A01

Brand \*NEW\* Longblock  
GM 8 Cyl., 5.7 Litre Gen+ 350 V8  
Replaces 1996 and newer 5.7L Gen+ Carbureted or Throttle Body Fuel Injected EFI sterndrive and inboard engines.

## LONG BLOCK ASSEMBLY



#### 879288A06

Brand \*NEW\* Longblock  
GM 8 Cyl., 6.2 Litre Gen+ 377 V8  
Replaces 2009 & newer MCM 6.2L Gen+ MPI engines (s/n 1A345480 and up); also 2009 & newer MIE 6.2L Gen+ MPI engines (s/n 1A091826 and up)

#### 865108A02

Brand \*NEW\* Longblock  
GM 8 Cyl., 6.2 Litre Gen+ 377 V8  
Replaces 2002-2009 MCM 6.2L Gen+ MPI engines (s/n 0M300000-1A345479); also 2002-2009 MIE 6.2L Gen+ MPI engines (s/n 0M300000-1A091825)

**LONGBLOCK ASSEMBLY**



**8M0045344**

Brand \*NEW\* Longblock  
GM 8 Cyl., 8.2 Litre 502 V8 GEN-VI Block  
Replaces 2010 & newer MCM/MIE 8.2L engines

**KITS**

**DRIVESHAFT KIT**



**45-864286A 1**

63 in. (1.6 m) driveshaft. (Optional shaft for use with 2.8L, 4.2L & 7.3L diesel main kits.)

**SILENCER KIT - AIR INTAKE**

Image not Available.

**8M0063432**

Reduces the throttle intake noise at cruise speed and mid-range RPM. Not recommended for V-drive installations. Backfits all MCM/MIE 8.2L engines w/o intake air silencer

**EXHAUST ELBOW KIT**

**8M0057574**

This elbow is 2 in.(51 mm) higher than the standard elbow. Fits 2012 & newer MCM/MIE 8.2L Emissions Control engines with single catalyst exhaust manifolds

**8M0057575**

This elbow is 4 in.(102 mm) higher than the standard elbow. Fits 2012 & newer MCM/MIE 8.2L Emissions Control engines with single catalyst exhaust manifolds

**8M0057576**

This elbow is 6 in.(152 mm) higher than the standard elbow. Fits 2012 & newer MCM/MIE 8.2L Emissions Control engines with single catalyst exhaust manifolds

**INTERMEDIATE ELBOW KIT**

**8M0057571**

Used in conjunction with Exhaust "Y" Pipe Kit 8M0057578 to convert engine to thru prop exhaust. Fits 2012 & newer MCM 8.2L EC engines with single catalyst exhaust manifolds and 2 in. (51 mm) risers.

**8M0057572**

Used in conjunction with Exhaust "Y" Pipe Kit 8M0057578 to convert engine to thru prop exhaust. Fits 2012 & newer MCM 8.2L EC engines with single catalyst exhaust manifolds and 4 in. (102 mm) risers

**8M0057573**

Used in conjunction with Exhaust "Y" Pipe Kit 8M0057578 to convert engine to thru prop exhaust. Fits 2012 & newer MCM 8.2L EC engines with single catalyst exhaust manifolds and 6 in. (152 mm) risers

**BOOST PUMP KIT**



**862264A 7**

Helps minimize vapor locking. Fits MCM/MIE 4.3L, 5.0L, 5.7L & 6.2L EFI/MPI engines

**WATER SEPARATING FUEL FILTER KIT**



**35-8M0046336**

This vessel mounted kit (with higher capacity) replaces the engine on-board water separating fuel filter. It features the use of a see-through plastic bowl for visual inspection and a drain for servicing. Fits the 135-200 Hp, 4-cylinder Verado outboard and must be installed in a compartment open to the atmosphere or void of ignition sources.

**WATER SEPARATING FUEL FILTER KIT**



**8M0056547**

Accessory under cowl kit. Fits the Mercury/Mariner 4/5/6 hp. FourStroke outboards starting with serial number 0R411838.

For more information, please contact your local Mercury, Mariner, MerCruiser or Quicksilver Office.

## WATER SEPARATING FUEL FILTER KIT



### 8M0059528

A vessel mounted water separating fuel filter featuring a see-through bowl for visual inspection and a drain for servicing. A water in fuel sensor will provide an alert compatible with Mercury controls and instrumentation.

Fits the Mercury/Mariner F150 Hp. EFI FourStroke 4-cylinder outboard and must be installed in a compartment open to the atmosphere or void of ignition sources.

## ENGINE FLUSH KIT

Image not Available.

### 8M0057577

This kit will allow you to flush the engine while it is running, therefore offering a more complete flush of the raw water cooled components.

Fits 2012 & newer MCM/MIE 8.2L Emissions Control engines with single catalyst exhaust manifolds.

## SEAWATER PUMP KIT

### 46-8M0063542

Fits MCM 4.3L EC Alpha engines. Used in conjunction with closed. See closed cooling kit application chart.

## SEAWATER PICKUP



### 88845A 2

Transom mount. This kit has a 1-1/2 in.(38mm) hose fitting to accommodate the sea water strainer supplied with the engine. The "Y" pipe supplied with the kit supplies both the drive water and the transom pickup water to the engine where the water supplied from the drive is insufficient for the engine.

Fits MCM diesels requiring additional water flow.

## SEAWATER PUMP KIT

Image not Available.

### 46-8M0063542

Fits MCM 4.3L EC Alpha engines. Used in conjunction with closed. See closed cooling kit application chart.

MERCUISER REMAN

**LONGBLOCK ASSEMBLY**

**LONGBLOCK ASSEMBLY**



**863814R06**

Remanufactured Pro-Series Longblock  
GM 4 Cyl., 3.0 Litre 181 cid I/L 4  
(Left-Hand Rotation)

Replaces 1996-1997 3.0LX sterndrive engines (s/n 0F604000-0K999999). Also 1998 and newer 3.0L sterndrive engines (s/n 0L010042 and up).

**8M0062850**

Remanufactured Pro-Series Longblock  
GM 4 Cyl., 3.0 Litre 181 cid I/L 4  
(Left-Hand Rotation)

Replaces 1990-1994 3.0L and 1990-1995 3.0LX sterndrive engines. (SN# 0C856559-0F603999)

**LONGBLOCK ASSEMBLY**



**8M0063328**

Remanufactured PRO-Series Longblock  
GM 6 Cyl., 4.3 Litre Gen+ 262 V6  
(Left-Hand Standard Rotation) with remanufactured Vortec cylinder heads.

Replaces 2001-2007 GM 4.3L balance-shaft marine engines with electric fuel pumps, roller rocker-arms

**864256R05**

Remanufactured PRO-Series Longblock  
GM 6 Cyl., 4.3 Litre Gen+ 262 V6  
(Left-Hand Standard Rotation) with remanufactured Vortec cylinder heads.  
Replaces 2001-2007 GM 4.3L balance-shaft MPI marine engines with electric fuel pumps, roller rocker-arms, crankshaft position sensor and 555 controller (SN# 0M300000-1A063239). This engine is interchangeable with 8M0057441.

**LONGBLOCK ASSEMBLY**



**806351R50**

Remanufactured PRO Series Longblock  
GM 7.4 Litre V/8 GEN-V Block  
(Left-Hand Standard Rotation)

Replaces 1992-1996 GM 7.4L sterndrive and inboard marine engines with oval ports and flat-tappets.

**LONGBLOCK ASSEMBLY**



**841178A05**

Brand \*NEW\* Longblock  
GM 8 Cyl., 8.2 Litre 502 V8 GEN-VI Block

Replaces 2006 & newer MCM Racing 525 EFI engines (s/n 0M953620 and up)

**LONGBLOCK ASSEMBLY**



**8M0062848**

Remanufactured PRO-Series Longblock  
GM 8 Cyl., 8.1 Litre 496 V8  
(Left-Hand Standard Rotation)

Replaces 2001 and newer GM 496 Mag. And 2001 and newer GM 8.1S Horizon

**8M0062849**

Remanufactured PRO-Series Longblock  
GM 8 Cyl., 8.1 Litre 496 V8  
(Left-Hand Standard Rotation)

Replaces 2001 and newer GM 496 Mag H.O.(High-Output). And 2001 and newer GM 8.1S Horizon H.O.(High-Output).

For more information, please contact your local Mercury, Mariner, MerCruiser or Quicksilver Office.

## LONGBLOCK ASSEMBLY



### **8M0062846**

Remanufactured PRO-Series Longblock  
GM 8 Cyl., 8.2 Litre 502 V8 GEN-VI Block  
(Left-Hand Standard Rotation)

Replaces 1996-2002 GM 502 MAGNUM sterndrive and MIE 8.2L inboard marine engines with high flow rectangle ports and roller-lifters.  
Will also backfit 1992-1996 GM 502 MAGNUM sterndrive and MIE 8.2L inboard GEN-V marine engines with flat-tappets, but will require replacing the harmonic balancer with newer version p/n 845625T2 or by scribing timing marks on the original harmonic balancer. Please double check the serial number and application chart prior to ordering.



**ANODES**

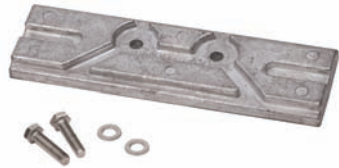
**ANODE KIT**



**8M0058677**

Aluminum anodes - For use in saltwater or freshwater. This is a complete anode kit to replace all factory installed anodes found on the transom and gearcase. Fasteners are not included. Fits the 6 cylinder, 200-300Hp. Verado outboards. Quicksilver Branded, Box Point of Sale Packaged.

**POWER TRIM ANODE**



**8M0057772**

Aluminum. Located on the bottom of the external power trim assembly. Fits the 150 Hp. EFI FourStroke outboard, 1B905505 and above.

**ANODE POWER TRIM BULK PACK**



**8M0059343**

20 Aluminum Power Trim Tab anodes per box. Located on the bottom of the external power trim pump assembly. Equivalent to the 818298Q1/T1. No hardware is included in the bulk pack of 20 pieces. Fits Mercury/Mariner 30/40 FourStroke, 40 (4 cylinder), 50 (3 cylinder 1987-1997), 55 (3 cylinder), 60-90 (3 cylinder 1987 & newer), 75 (4 cylinder), 75/90 FourStroke, 100-125 (4cyl), 115 (6 cylinder 1984-1988), and all V-6 and OptiMax outboard engines.

**ANODE BULK PACK**



**8M0059338**

25 Aluminum Trim Tab anodes per box. Equivalent to the individually packaged 31640T4/Q4. Fits most Mercury/Mariner outboards 35 hp. & above and all MerCruiser except Bravo. Check for adequate propeller clearance prior to operation.

**ANODE BULK PACK**



**8M0059339**

10 Aluminum Anodic Plates per box. Equivalent to individually packaged 76214Q5/T5. Provides additional clearance for high rake propellers. Fits Mercury/Mariner 35-300hp, Force 90 & 120hp 1995 and newer, MerCruiser Alpha One Gen II and Bravo I, II, III, X XR & XZ drives.

**ANODE BULK PAK**



**8M0059341**

40 Aluminum Trim Cylinder Anodes per box. Equivalent to the individually packaged 806189Q1/T1. NOTE: Does not include the mounting hardware. Fits Alpha One Gen II drives.

ANODES

For more information, please contact your local Mercury, Mariner, MerCruiser or Quicksilver Office.



## ANODE BULK PAK



### 8M0059342

40 Aluminum Trim Cylinder Anodes per box. Equivalent to the individually packaged 806190Q1/T1.

NOTE: Does not include the mounting hardware.

Fits Vazer and Bravo I, II, III, X, XR, XZ and Blackhawk drives.

## ANODE SIDE POCKET BULK PACK



### 8M0059344

10 Aluminum side pocket anodes per box

Located in side pockets on the gearhousing just above the cavitation plate.

Equivalent to the 826134Q/T. No hardware included in this bulk pack of 10 pieces.

Fits Mercury/Mariner 30-300hp outboards and also fits Force 90 & 120hp 1995 and newer outboards.

**FUEL / OIL TANKS AND FUEL LINES**

**TRANSMISSION OIL FILTER**



**35-879312T25**

Transmission  
Fits Scorpion 350 EC w/ ZF 45C transmission  
Mercury Branded

**DECK FILL KIT - OIL (STRAIGHT ELBOW)**



**15969A13**

Comes with deck fittings, filler cap and mounting hardware. Oil fill hose must be ordered separately to complete the assembly.  
For use with 1.8 US gal (6.8 L) or 3 US gal (11 L) remote oil tank reservoirs. This kit must NOT be used with Auto Blend.

**FUEL FILTER ELEMENT**



**35-8M0060041**

Fits the new Verado outboard replaceable cartridge fuel filter and the newer 1.5L & 3.0L DFI outboards that utilize a vapor separator with a top screw-in type filter.

**9 FT. FUEL LINE ASSEMBLY**



**32-8M8026967**

Low Permeation hose 9 ft. (2.74 m) 5/16" line with primer bulb, 2 snap clamps, and no end connectors.  
Standard universal 5/16" (8 mm) I.D. fuel line can be adapted to many uses by adding different connectors as desired. This assembly may be used in all applications not governed by US-EPA 2011 regulations.

**FUEL LINE ASSEMBLY- UNIVERSAL**



**32-8M0038468**

Fuel hose (only). CE certified 5/16" I.D. (.315 in. 8 mm) fuel line with no connectors. 9 ft. (2.74 m) Premium fuel line for custom manufacturing fuel line assemblies.

**PREMIUM 3.2 US GAL (12 L) FUEL TANK**



**1200-8M0047599**

Includes a 1/4" NPT threaded fuel line opening, a mechanical fuel gauge and top vented fuel cap.  
Quicksilver Branded

## FUEL / OIL TANKS AND FUEL LINES

### STANDARD 3.2 US GAL (12 L) FUEL TANK



**1200-8M0056211**

3.2 US gal (12 L) capacity, 14 1/2 in. (368 mm) x 9 3/4 in. (248 mm) x 9 in. (229 mm).

Furnished with 1/4-18 threaded fuel line fitting and manual venting cap.

Quicksilver Branded

### SUPER 3.2 US GAL (12 L) FUEL TANK



**1200-8M0057252**

3.2 US gal (12 L) capacity, 14 1/2 in. (368 mm) x 9 3/4 in. (248 mm) x 9 in. (229 mm) with "shielded" quick connect fuel outlet.

Manual venting. Integral fuel level gauge.

For use with double sealed fuel connector.

Quicksilver Branded

### PREMIUM 6.6 GAL (25 L) FUEL TANK



**1200-8M0047607**

6.6 US gal (25 L) capacity, 19 in. (480 mm) x 12 1/2 in. (318 mm) x 11 1/8 in. (282mm).

Furnished with 1/4-18 threaded fuel line fitting, and manual venting cap, and integral fuel level gauge.

This tank can not be sold in areas governed by US-EPA regulations.

Quicksilver Branded

### PREMIUM 6.6 US GAL (25 L) FUEL TANK



**1200-8M0047603**

Includes a 1/4" NPT threaded fuel line opening, a mechanical fuel gauge and top vented fuel cap.

This tank can not be sold in areas governed by US-EPA regulations.

Quicksilver Branded

### STANDARD 6.6 US GAL (25 L) FUEL TANK



**1200-8M0057254**

6.6 US gal (25 L) capacity, 21 3/4 in. (552 mm) x 14 1/2 in. (368 mm) x 10 in. (254 mm).

Furnished with 1/4-18 threaded fuel line fitting and manual venting cap.

This tank can not be sold in areas governed by US-EPA regulations.

Quicksilver Branded

### STANDARD 6.6 US GAL (25 L) FUEL TANK



**1200-8M0057256**

6.6 US gal (25 L) capacity, 19 in. (480 mm) x 12 1/2 in. (318 mm) x 11 1/8 in. (282mm).

Furnished with 1/4-18 threaded fuel line fitting, and manual venting cap.

This tank can not be sold in areas governed by US-EPA regulations.

Quicksilver Branded

**SUPER 6.6 GAL (25 L) FUEL TANK****1200-8M0056210**

6.6 US gal (25 L) capacity, 19 in. (480 mm) x 12 1/2 in. (318 mm) x 11 1/8 in. (282mm) with "shielded" quick connect fuel outlet.  
Manual venting. Integral fuel level gauge.

For use with double sealed fuel connector. This tank can not be sold in areas governed by US-EPA regulations.

Quicksilver Branded

**SUPER 6.6 US GAL (25 L) FUEL TANK****1200-8M0057255**

6.6 US gal (25 L) capacity, 21 3/4 in. (552 mm) x 14 1/2 in. (368 mm) x 10 in. (254 mm) with "shielded" quick connect fuel outlet.  
Manual venting. Integral fuel level gauge.

For use with double sealed fuel connector. This tank can not be sold in areas governed by US-EPA regulations.

Quicksilver Branded

**OILS/LUBES/FUEL/ENGINE CARE AND PAINTS**

**LOCTITE HI-TACK STICK - GASKET DRESSING**



**92-8M0061870**

Wax-like stick formulated to work like Loctite Hi-Tack Liquid, but less messy, low odor and solvent-free. Sets quickly to a very tacky film and seals and holds the heaviest gaskets in place. Resists gasoline, oil, and common shop fluids.

19 g (.67 oz) tube

**EXTENDED LIFE COOLANT/ANTIFREEZE**



**92-877770Q 1**

Provides extended life protection for closed cooling systems. This 5 year, 1000 hour protection is ethylene glycol based and pre-diluted 50/50 with de-ionized water. It is Silicate and Phosphate free and will not cause gelling. Provides freeze protection down to -34 deg. F and boiling protection to 265 deg. F and is DexCool compatible. It is also compatible with conventional anti-freeze, but dilution will reduce extended life benefits.

All MCM/MIE gasoline engines with closed cooling systems.

Priced individually, sold @ multiples of 4

3.78 L (1 US gal) plastic bottle

Quicksilver Branded

**SAE 80W90 GEAR LUBE**



**92-858007Q01**

18.9 L (5 US gal) plastic pail

Quicksilver Branded

**STORAGE SEAL FOGGING OIL**



**92-858081Q03**

Quicksilver Storage Seal forms a protective barrier that prevents rust on internal metal surfaces. It also keeps cylinders lubricated to prevent cylinder or piston damage when starting your engine after storage.

Use in all 2- and 4-cycle carbureted and fuel-injected gasoline engines including cars, trucks, motorcycles, ATVs, snowmobiles, marine engines, lawn mowers, chain saws, string trimmers and snow blowers.

Safe for catalyzed engines.

Priced individually, sold @ multiples of 12

340 g (12 oz) spray can

Quicksilver Branded

**FUEL INJECTION CLEANER TOOL**



**91-898263A01**

- Connects directly to your shop air supply. When used with recommended solvent, will clean injectors more effectively than aerosol methods.

- Includes gauge, hose, instructions, and Tools & Techniques manual.

**FUEL INJECTION PRO INJECT-R CLEANER**



**92-8M0062765**

This fluid restores injectors to their original spray pattern, helps prevent recurring problems, and reduces intake and port deposits. Used in canister-type cleaning devices.

Note: Not for use as a fuel additive; do not pour into fuel tank.

For professional use only. Use in Mercury pressurized injector cleaner tool 91-898263A01. Consult instruction sheet (comes with tool) 90-898266 for proper use.

Priced individually, sold @ multiples of 12

473 mL (16 fl oz) can

Mercury Branded

**POWER TUNE INTERNAL ENGINE CLEANER**



**92-858080Q03**

Quicksilver Power Tune® is recommended to assist in restoring lost power due to carbon, gum and varnish deposits that accumulate in the combustion chambers of gasoline engines. These deposits are the result of normal engine use, low temperature operation and the use of some fuels. Removing these deposits helps improve fuel/air flow and overall engine performance.

Use in all 2- and 4-cycle carbureted and fuel-injected gasoline engines including cars, trucks, motorcycles, ATVs, snowmobiles, marine engines, lawn mowers, chain saws, string trimmers and snow blowers.

Safe for catalyzed engines.

Priced individually, sold @ multiples of 12

340 g (12 oz) spray can

Quicksilver Branded

**QUICKARE FUEL TREATMENT**



**92-8M0047920**

Quickare is a fuel treatment that can be used at every fill-up to:

- Maximize engine performance with all grades of gasoline
- Help control corrosion, gum and varnish build-up and phase separation associated with ethanol-blended fuel
- Help control moisture and corrosion problems associated with non-ethanol-blended fuel
- Clean up existing varnish and gum deposits from fuel lines, tanks, carburetors and injectors, intake valves and spark plugs
- Keep fuel fresh between fill-ups - up to 3 months

1 ounce treats 10 gallons - 12 ounce bottle treats 120 gallons

- Use in all grades of gasoline including ethanol blends
- Use in 2-cycle and 4-cycle gasoline engines
- Safe for catalyzed engines

355 mL (12 oz) plastic bottle

Quicksilver Branded

**QUICKARE FUEL TREATMENT**



**92-8M0058680**

1 ounce treats 10 gallons of fuel

32 ounce bottle treats 320 gallons of fuel

Priced individually, sold @ multiples of 6

946 mL (32 oz) bottle

Quicksilver Branded

## QUICKLEEN ENGINE & FUEL SYSTEM CLEANER



**92-8M0047921**

Quickleen should be used throughout the boating season to:

- Quickly and thoroughly remove carbon deposits from carburetors and injectors, intake valves, spark plugs, piston crowns and cylinder heads
- Prevent engine knocking and piston seize-up
- Extend spark plug life

Note: This product does not contain fuel stabilizers. Use with Quickcare to prevent fuel breakdown and oxidation.

1 ounce treats 5 gallons - 12 ounce bottle treats 60 gallons

- Use in all grades of gasoline including ethanol blends
- Use in 2-cycle and 4-cycle gasoline engines
- Safe for catalyzed engines

355 mL (12 oz.) plastic bottle

Quicksilver Branded

## QUICKLEEN ENGINE & FUEL SYSTEM CLEANER



**92-8M0058681**

1 ounce treats 5 gallons of fuel

32 ounce bottle treats 160 gallons of fuel

Priced individually, sold @ multiples of 6

946 mL (32 oz)

Quicksilver Branded

## QUICKSTOR FUEL STABILIZER



**92-8M0047922**

Quickstor is two times stronger than the previous Fuel System Treatment & Stabilizer. Add Quickstor to fuel before long-term boat storage to:

- Prevent regular and ethanol-blended fuel from breaking down and oxidizing
- Stabilize fuel for up to a year
- Prevent fuel system corrosion
- Prevent gum and varnish from forming in the fuel and settling in fuel lines and tanks, carburetors and injectors
- Keep injectors and carburetors lubricated

1 ounce treats 5 gallons - 12 ounce bottle treats 60 gallons

- Use in all grades of gasoline including ethanol blends
- Use in 2-cycle and 4-cycle gasoline engines
- Safe for catalyzed engines

355 mL (12 oz.) plastic bottle

Quicksilver Branded

## QUICKSTOR FUEL STABILIZER



**92-8M0058682**

1 ounce treats 5 gallons of fuel

32 ounce bottle treats 160 gallons of fuel

Priced individually, sold @ multiples of 6

946 mL (32 oz)

Quicksilver Branded

## QUICKSTOR FUEL STABILIZER



**92-8M0058683**

1 ounce treats 5 gallons of fuel

128 ounce (1 gallon) bottle treats 640 gallons of fuel

Priced individually, sold @ multiples of 4

3.78 L (1 gallon) plastic bottle

Quicksilver Branded



PAINTS

VERADO SILVER



92-802878Q20

Priced individually, sold @ multiples of 6

340 g (12 oz) can

Quicksilver Branded

VERADO SILVER



92-802878Q21

Priced individually, sold @ multiples of 6

18mL (.6 fl oz) bottle with applicator brush

Quicksilver Branded, Box Point of Sale Packaged.

For more information, please contact your local Mercury, Mariner, MerCruiser or Quicksilver Office.

**SMARTCRAFT**

**RIGGING KITS**

**ANALOG TO DIGITAL CONVERSION KIT**



**859649A 2**

Converts an analog to a digital OptiMax. Contains the sensors, harnesses and instructions needed.

Fits 2000 OptiMax 3.0L engines.

**SMARTCRAFT RIGGING PREP KIT FOR OPTIMAX - SINGLE**



**8M0056275**

Kit contains the following:

- 1257- 8742A21 Oil Tank with Oil Sender (1)
- 84-879982A30 30 ft 2RSL SmartCraft Harness (1)
- 84-859743A 1 Harness Asy - Boat

Fits 2006 OptiMax Outboards, 2006 V-6 EFI Outboards and Pro Max Mercury Racing Outboards (when equipped with the 555 Electronic Control Module). The oil tank bracket may only be used as a floor mounted application.

**SMARTCRAFT RIGGING PREP KIT FOR OPTIMAX - SINGLE**



**8M0056276**

Kit contains the following:

- 1257- 8742A21 Oil Tank with Oil Sender (1)
- 79-8M0034627 SC1000 System Monitor
- 84-879982A30 30 foot @RSL SmartCraft Harness

Fits 2006 OptiMax Outboards, 2006 V-6 EFI Outboards and Pro Max Mercury Racing Outboards (when equipped with the 555 Electronic Control Module). The oil tank bracket may only be used as a floor mounted application.

**SMARTCRAFT RIGGING PREP KIT FOR OPTIMAX - SINGLE**



**8M0056277**

Kit contains the following:

- 1257- 8742A21 Oil Tank with Oil Sender (1)
- Harness to oil, fuel and paddle wheel (1)
- 84-859743T03 Boat harness for oil and fuel
- Removed the 84-879982A30 from the kit . When using the 14 pin harness for non DTS, this data harness is no longer required. (Ref 84-896537\_\_ engine to helm harness)

Fits 2006 OptiMax Outboards, 2006 V-6 EFI Outboards and Pro Max Mercury Racing Outboards (when equipped with the 555 Electronic Control Module). The oil tank bracket may only be used as a floor mounted application.

**SMARTCRAFT RIGGING PREP KIT**

**8M0056278**

Kit contains the following:

- 1257- 8742A21 Oil Tanks with Oil Senders (2)
- 859223 Speed/Temperature Sensor (1)
- 84-859743T 1 Hanes to oil, fuel and paddle wheel (2)
- 84-879981T30 SC1000R-30, 30 ft. (9.1 meter) Data Harnesses (2)
- 878492A16, 6-Plug J Box (1)
- 859318T 2 Weather Caps (2)
- 881175A 1 Male Connector Cap (1)
- 881176A 1 Female Connector Cap (1)

For dual application. Fits 2001-2005 OptiMax Outboards, 2002-2005 V-6 EFI Outboards and Pro Max Mercury Racing Outboards (when equipped with the 555 Electronic Control Module). The oil tank bracket may only be used as a floor mounted application.

**SMARTCRAFT ENGINE DATA KIT**



**8M0056279**

Kit contains the following:

- 1257- 8742A22 Oil Tank without Oil Sender (1)
- 79-879896K21 Front Mount SC1000 System Monitor
- Data Harness removed for 2006 (84-879982A30) - use new 14 pin harness with 84-896537 series which eliminates the data harness - 10 pin is part of primary engine to helm harness
- The oil tank bracket may only be used as a floor mounted application.

Fits 2006 and newer OptiMax Outboards when using new 14 pin harness

**VESSELVIEW / MERCMONITOR**

**NMEA 2000 GPS ANTENNA**



**8M0043962**

NMEA 2000 GPS Antenna. For use with MercMonitor SmartTow Pro. MercMonitor SmartTow Pro, NMEA 2000 capable chartplotters and products.

**REMOTE DASH PAD-SMARTTOW**



**87-889305T02**

Remote Dash Pad provides a solution for hard-to-reach gauge installations by allowing the user to remotely navigate between VesselView, SC1000 Tach, SC1000 Speed, and new MercMonitor gauges. For tow sport applications, the pad also allows direct access to SmartTow® functionality by providing a dedicated On/Off button.

Navigate seamlessly between SC1000 Tach & Speed, VesselView and MercMonitor.

**VESSELVIEW KIT**



**79-8M0058806**

VesselView is a direct sunlight viewable color display that displays engine, vessel, and navigational data. Can be used with SC100 links, SC1000 monitors and SC1000 tach/speed gauges. Kit includes VesselView and harness.

Works with Gen I (2007) Engines and newer. Includes outboard and MerCruiser product.

**VESSELVIEW KIT**

**79-8M0058808**

VesselView is a direct sunlight viewable color display that displays engine, vessel, and navigational data. Can be used with SC100 links, SC1000 monitors and SC1000 tach/speed gauges. Kit includes VesselView and harness.

Works with MERCURY Axis Only

**VESSELVIEW KIT WITH SMARTTOW RPM**

**79-8M0058807**

VesselView is a direct sunlight viewable color display that displays engine, vessel, and navigational data. Can be used with SC100 links, SC1000 monitors and SC1000 tach/speed gauges. Kit includes VesselView and harness. This kit includes SmartTow application (RPM) which allows for 5 launch profiles and added graphic views

Works with Gen I (2007) Engines and newer. Includes outboard and MerCruiser product.

**VESSELVIEW KIT**

**79-8M0052337**

VesselView is a direct sunlight viewable color display that displays engine, vessel, and navigational data. Can be used with SC100 links, SC1000 monitors and SC1000 tach/speed gauges. Kit includes VesselView and harness.

Works with CMD Zues and CMD Axis ONLY

**VESSELVIEW KIT**

**79-8M0063233**

VesselView is a direct sunlight viewable color display that displays engine, vessel, and navigational data. Can be used with SC100 links, SC1000 monitors and SC1000 tach/speed gauges. Kit includes VesselView and harness. Supports 150 4 stroke Maintenance Feature.

Works with Gen I (2007) Engines and newer. Includes outboard and MerCruiser product.

**MERCMONITOR - NO NMEA 2000**



**79-8M0062377**

MercMonitor 85mm, monochrome display chrome bezel included. Has full SmartCraft functionality (INCLUDING ECO SCREEN) and will display all information that is available on selected SmartCraft engines. Includes Tri-Color LED which allows user to pick backlight and keybutton color from menu to match other gauges on vessel. Screens include customizable favorites, descriptive fault text (Gen I (2007) and newer engines only), speed, depth and much more. (Does not include Gateway functionality). Supports 150 4 stroke Maintenance Feature. Fits 2002 and newer OptiMax Outboards, V-6 EFI, 30-60 EFI 4-Stroke, all SmartCraft compatible MerCruiser and Mercury Racing product.

**MERCMONITOR NMEA 2000 DATA LEVEL 1 KIT**



**79-8M0062374**

MercMonitor Base version has full SmartCraft functionality and will display all information that is available on selected SmartCraft engines. Includes ECO screen and NMEA 2000 gateway Level 1. Other features include Tri-Color LED which allows user to pick backlight and keybutton color from menu to match other gauges on vessel. Screens include customizable favorites, descriptive fault text (Gen I (2007) and newer engines only), speed, depth and much more. Includes Chrome, White, and Black Bezels. Supports 150 4 stroke Maintenance Feature.

**For more information, please contact your local Mercury, Mariner, MerCruiser or Quicksilver Office.**

## MERCMONITOR NMEA 2000 DATA LEVEL 2 SMARTTOW RPM KIT



**79-8M0062375**

MercMonitor RPM SmartTow has full SmartCraft and SmartTow RPM functionality. software allows you to launch your boat using RPM profiles ONLY. Will display all information that is available on selected SmartCraft engines. Includes ECO screen and NMEA 2000 gateway Level 2. Other features include Tri-Color LED which allows user to pick backlight and keybutton color from menu to match other gauges on vessel. Screens include customizable favorites, descriptive fault text (Gen I (2007) and newer engines only), speed, depth and much more. Includes Chrome, White, and Black Bezels. Supports 150 4 stroke Maintenance Feature.

## MERCMONITOR NMEA 2000 DATA LEVEL 3 SMARTTOW PRO KIT



**79-8M0063240**

MercMonitor Gateway level 3 has full SmartCraft and SmartTow PRO functionality (GPS PUCK INCLUDED). SmartTow Pro software allows you to launch your boat using SPEED and RPM profiles. Will display all information that is available on selected SmartCraft engines. Includes ECO screen and NMEA 2000 Multi Engine gateway Level 3. Other features include Tri-Color LED which allows user to pick backlight and keybutton color from menu to match other gauges on vessel. Screens include customizable favorites, descriptive fault text (Gen I (2007) and newer engines only), speed, depth and much more. Includes Chrome, White, and Black Bezels. Supports 150 4 stroke Maintenance Feature.

## MERCMONITOR NMEA 2000 DATA LEVEL 3 GATEWAY PREMIER KIT



**79-8M0063241**

MercMonitor Gateway Premier Kit has full SmartCraft and SmartTow RPM functionality. software allows you to launch your boat using RPM profiles ONLY. Will display all information that is available on selected SmartCraft engines. Includes ECO screen and NMEA 2000 multi engine gateway Level 3. Other features include Tri-Color LED which allows user to pick backlight and keybutton color from menu to match other gauges on vessel. Screens include customizable favorites, descriptive fault text (Gen I (2007) and newer engines only), speed, depth and much more. Includes Chrome, White, and Black Bezels. Supports 150 4 stroke Maintenance Feature.

## SMARTCRAFT SC1000 SYSTEM MONITOR



**79-879896K19**

Rear mount. Uses a custom rectangular hole and two oblong holes for mounting. Hole dimensions are available in the SmartCraft Product Guide. Delivers an alarm on battery, water pressure and oil pressure. Mounts from behind the dash panel and only the LCD and control buttons protrude. May provide additional information on fuel consumption, fuel range, engine hours, coolant temperature and engine trim depending on engine type and its sensors. 1102tnayw  
Fits 2002 and newer SmartCraft compatible Outboards, SmartCraft compatible MerCruiser and SmartCraft compatible Mercury Racing product.

## SMARTCRAFT SC1000 SYSTEM MONITOR



**79-879896K21**

Front mount. Uses a standard 2-1/8" (52 mm) dia. Hole. Delivers an alarm on battery, water pressure and oil pressure. May provide additional information on fuel consumption, fuel range, engine hours, coolant temperature and engine trim depending on engine type and its sensors.  
Fits 2002 and newer SmartCraft compatible outboards, SmartCraft compatible MerCruiser and SmartCraft compatible Mercury Racing product.

## BOAT HARNESS ADAPTER- 6 PIN F- 6 PIN F 6'



**84-883459T01**

Needed in order for 2005 and older outboard engines to work with 84-859743T03 boat harness (6 foot)  
DTS Outboard engines

**ACCESSORY POWER HARNESS / RELAY HARNESS KIT**



**84-899785K30**

Used to provide accessory power to auxiliary loads when the keyswitch is in the "Run" or "Accessory" positions. Includes 40 amp relay, harness and 30 ft power cable with 40 amp fuse and three pole terminal block. Verado and Optimax DTS outboards and 5.0 through 8.1L/496 Mag DTS MCM/ MIE products.

**PITOT SENSOR KIT**



**8M0059530**

Components needed to add pitot for speedometer gauges  
150 4 Stroke Engines

**WATER PRESSURE KIT**



**8M0059531**

Components needed for water pressure gauges  
150 4 Stroke Engines

**SC 1000 SYSTEM GAUGES**

**SC1000 SMART TOW PRO - SPEED BASED**



**79-879169K13**

0 - 80 MPH. Gray face and black bezel with black numerals. Smart Tow Pro includes five profiles that allows customized launch control plus 10 additional user customizable profiles that can be named. Kit includes GPS sensor. Great for ski market and weekend sport enthusiast. New descriptive text fault displayed for easier problem recognition. Users will find profiles are programmed from soft to aggressive launch. Just hit the throttle and let the gauge do the rest. Can be used with Gen I (2007) engines and newer. \*Must be used with SC1000 System Tach Version 4.0 Gauge software and newer (version is found on back of gauge)

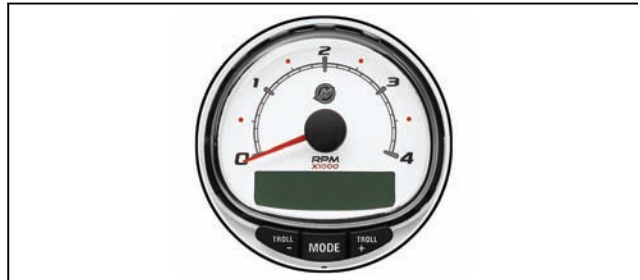
**SC1000 SMART TOW PRO - SPEED BASED**



**79-879169K14**

0 - 80 MPH. White face and Chrome bezel with black numerals. Smart Tow Pro includes five profiles that allows customized launch control plus 10 additional user customizable profiles that can be named. Kit includes GPS sensor. Great for ski market and weekend sport enthusiast. New descriptive text fault displayed for easier problem recognition. Users will find profiles are programmed from soft to aggressive launch. Just hit the throttle and let the gauge do the rest. Can be used with Gen I (2007) engines and newer. \*Must be used with SC1000 System Tach Version 4.0 Gauge software and newer (version is found on back of gauge)

**TACHOMETER**



**79-8M0059079**

SC1000 4000 RPM Tach gauge, white face, glass lens. Fits 85mm dia. hole.

Fits 2001 and newer Optimax Outboards, 2002 and newer V-6 EFI, 30-60 EFI 4-stroke, Verado, all SmartCraft compatible Mercruiser and Mercury Racing product when these models have the 555 ECM. Application of this gauge will depend on the individual engine model and its available sensors.

BEZEL SOLD SEPERATELY. Used on all SmartCraft capable engines



## TACHOMETER



**79-8M0059085**

SC1000 4000 RPM Tach gauge, black face, glass lens. Fits 85mm dia. hole.

Fits 2001 and newer Optimax Outboards, 2002 and newer V-6 EFI, 30-60 EFI 4-stroke, Verado, all SmartCraft compatible Mercruiser and Mercury Racing product when these models have the 555 ECM. Application of this gauge will depend on the individual engine model and its available sensors.

BEZEL SOLD SEPERATELY. Used on all SmartCraft capable engines

## SC1000 SMART TOW RPM BASED



**79-898283K13**

0-7000 RPM. Grey face with White numerals. Smart Tow includes five profiles that allows customized launch control. Great for ski market and weekend sport enthusiast. New descriptive text fault displayed for easier problem recognition. Users will find profiles are programmed from soft to aggressive launch. Just hit the throttle and let the gauge do the rest.

All DTS engines Gen I (2007) and newer. Includes MerCruiser and Outboard.

## SC1000 SMART TOW RPM BASED



**79-898283K14**

Smart Tow logic.0-7000 RPM. White face with Black numerals. Smart Tow includes five profiles that allows customized launch control. Great for ski market and weekend sport enthusiast. New descriptive text fault displayed for easier problem recognition. Users will find profiles are programmed from soft to aggressive launch. Just hit the throttle and let the gauge do the rest.

All DTS engines Gen I (2007) and newer. Includes MerCruiser and Outboard.

## TACHOMETER



**79-8M0062381**

SC1000 7000 RPM Tach gauge, white face, glass lens. Fits 85mm dia. hole.

Fits 2001 and newer Optimax Outboards, 2002 and newer V-6 EFI, 30-60 EFI 4-stroke, Verado, all SmartCraft compatible Mercruiser and Mercury Racing product when these models have the 555 ECM. Application of this gauge will depend on the individual engine model and its available sensors.

BEZEL SOLD SEPERATELY. Used on all SmartCraft capable engines

## SC1000 SYSTEM TACHOMETER



**79-8M0062382**

0-7000 RPM. Black face with white numerals.

New descriptive text fault displayed for easier problem recognition. (descriptive text is displayed on all SmartCraft engines Gen I (2007) and newer. Including MerCruiser and Outboard.)

Fits 2002 and newer SmartCraft compatible Outboards, SmartCraft compatible MerCruiser and SmartCraft compatible Mercury Racing product. BEZEL SOLD SEPERATELY. Supports 150 4 stroke Maintenance Feature.

## TACHOMETER



**79-8M0063213**

SC1000 7000 RPM Tach gauge, white face, glass lens. Fits 85mm dia. hole.

Fits 2001 and newer Optimax Outboards, 2002 and newer V-6 EFI, 30-60 EFI 4-stroke, Verado, all SmartCraft compatible Mercruiser and Mercury Racing product when these models have the 555 ECM. Application of this gauge will depend on the individual engine model and its available sensors.

BEZEL SOLD SEPERATELY. Used on all SmartCraft capable engines. Supports 150 4 stroke Maintenance Feature. BULK KIT - Priced individually, sold @ multiples of 24

**SC1000 SYSTEM TACHOMETER**



**79-8M0063214**

0-7000 RPM. Black face with white numerals. New descriptive text fault displayed for easier problem recognition. (descriptive text is displayed on all SmartCraft engines Gen I (2007) and newer. Including MerCruiser and Outboard.) Supports 150 4 stroke Maintenance Feature. Fits 2002 and newer SmartCraft compatible Outboards, SmartCraft compatible MerCruiser and SmartCraft compatible Mercury Racing product. BEZEL SOLD SEPERATELY. BULK KIT - Priced individually, sold @ multiples of 24

**SC1000 SYSTEM TACHOMETER**



**79-889222B22**

0-7000 RPM. White face and bezel; black numerals. Descriptive fault text added. (descriptive text is displayed on all SmartCraft engines Gen I (2007) and newer. Includes MerCruiser and Outboard.) Fits 2002 and newer OptiMax Outboards, V-6 EFI, 30-60 EFI 4-Stroke, all SmartCraft compatible MerCruiser and Mercury Racing product. BULK KIT - Priced individually, sold @ multiples of 24

**SC1000 SYSTEM TACHOMETER**



**79-8M0063215**

0-7000 RPM. Gray face with black numerals. Fits 2002 and newer SmartCraft compatible Outboards, SmartCraft compatible MerCruiser and SmartCraft compatible Mercury Racing product. Supports 150 4 stroke Maintenance Feature. BULK KIT - Priced individually, sold @ multiples of 24

**SC1000 SYSTEM TACHOMETER**



**79-889222K24**

0-7000 RPM. White face with black numerals. New descriptive text fault displayed for easier problem recognition (descriptive text is displayed on all SmartCraft engines 2007 and newer. Including MerCruiser and Outboard.) Fits 2002 and newer SmartCraft compatible Outboards, SmartCraft compatible MerCruiser and SmartCraft compatible Mercury Racing product.

**79-8M6001270**

0-7000 RPM. Gray face with black numerals. New descriptive text fault displayed for easier problem recognition. (descriptive text is displayed on all SmartCraft engines Gen I (2007) and newer. Including MerCruiser and Outboard.) Supports 150 4 stroke Maintenance Feature. Fits 2002 and newer SmartCraft compatible Outboards, SmartCraft compatible MerCruiser and SmartCraft compatible Mercury Racing product. Supports 150 4 stroke Maintenance Feature.

**SC1000 TACH WHITE**

**79-889222B24**

Fits 2002 and newer SmartCraft compatible Outboards, SmartCraft compatible MerCruiser and SmartCraft compatible Mercury Racing product. 0-7000 RPM. White face with black numerals. New descriptive text fault displayed for easier problem recognition (descriptive text is displayed on all SmartCraft engines Gen I (2007) and newer. Including MerCruiser and Outboard.) BULK KIT - Priced individually, sold @ multiples of 24

**SC1000 SYSTEM TACHOMETER**



**79-889222B21**

0-7000 RPM. Black face with white numerals. Shows descriptive fault text. (descriptive text is displayed on all SmartCraft engines Gen I (2007) and newer. Including MerCruiser and Outboard.) BULK KIT - Priced individually, sold @ multiples of 24

**SPEEDOMETER**



**79-8M0059075**

SC1000 50 MPH Speed gauge, white face, glass lens. Fits 85mm dia. hole.

Fits 2001 and newer Optimax Outboards, 2002 and newer V-6 EFI, 30-60 EFI 4-stroke, Verado, all SmartCraft compatible MerCruiser and Mercury Racing product when these models have the 555 ECM. Application of this gauge will depend on the individual engine model and its available sensors. BEZEL SOLD SEPERATELY. Used on all SmartCraft capable engines

**For more information, please contact your local Mercury, Mariner, MerCruiser or Quicksilver Office.**



## SPEEDOMETER



**79-8M0059081**

SC1000 50 MPH speed gauge, black face, glass lens. Fits 85mm dia. hole.

Fits 2001 and newer Optimax Outboards, 2002 and newer V-6 EFI, 30-60 EFI 4-stroke, Verado, all SmartCraft compatible Mercruiser and Mercury Racing product when these models have the 555 ECM. Application of this gauge will depend on the individual engine model and its available sensors.

BEZEL SOLD SEPERATELY. Used on all SmartCraft capable engines

## SPEEDOMETER



**79-8M0059077**

SC1000 80 MPH speed gauge, white face, glass lens. Fits 85mm dia. hole.

Fits 2001 and newer Optimax Outboards, 2002 and newer V-6 EFI, 30-60 EFI 4-stroke, Verado, all SmartCraft compatible Mercruiser and Mercury Racing product when these models have the 555 ECM. Application of this gauge will depend on the individual engine model and its available sensors.

BEZEL SOLD SEPERATELY. Used on all SmartCraft capable engines

## SPEEDOMETER



**79-8M0059082**

SC1000 80 MPH speed gauge, black face, glass lens. Fits 85mm dia. hole.

Fits 2001 and newer Optimax Outboards, 2002 and newer V-6 EFI, 30-60 EFI 4-stroke, Verado, all SmartCraft compatible Mercruiser and Mercury Racing product when these models have the 555 ECM. Application of this gauge will depend on the individual engine model and its available sensors.

BEZEL SOLD SEPERATELY. Used on all SmartCraft capable engines

## SC1000 SYSTEM SPEEDOMETER



**79-889223B21**

0-80 MPH. Black face with white numerals. Shows descriptive fault text. (descriptive text is displayed on all SmartCraft engines Gen I (2007) and newer. Including Mercruiser and Outboard.) BULK KIT - Priced individually, sold @ multiples of 24

Fits 2002 and newer SmartCraft compatible Outboards, SmartCraft compatible Mercruiser and SmartCraft compatible Mercury Racing product.

Priced individually, sold @ multiples of 24

## SC1000 SYSTEM SPEEDOMETER



**79-889223B22**

0-80 MPH. Contains System Speedometer air temp sensor and system speedometer harness. White face and white bezel with black numerals.

New descriptive text fault displayed for easier problem recognition. (descriptive text is displayed on all SmartCraft engines Gen I (2007) and newer. Includes Mercruiser and Outboard.) Bulk 24 Pack

Fits 2002 and newer OptiMax Outboards, V-6 EFI, 30-60 EFI 4-Stroke, all SmartCraft compatible Mercruiser and Mercury Racing product.. BULK KIT - Priced individually, sold @ multiples of 24

## SC1000 SYSTEM SPEEDOMETER



**79-889223K23**

0-80 MPH. Contains System Speedometer air temp sensor and system speedometer harness. Gray face with black numerals.

New descriptive text fault displayed for easier problem recognition. (descriptive text is displayed on all SmartCraft engines Gen I (2007) and newer. Including Mercruiser and Outboard.)

Fits 2002 and newer SmartCraft compatible Outboards, SmartCraft compatible Mercruiser and SmartCraft compatible Mercury Racing product.

**79-889223B23**

0-80 MPH. Contains System Speedometer air temp sensor and system speedometer harness. Gray face with black numerals. New descriptive text fault displayed for easier problem recognition. (descriptive text is displayed on all SmartCraft engines Gen I (2007) and newer. Including MerCruiser and Outboard.) Bulk 24 Pack  
 Fits 2002 and newer SmartCraft compatible Outboards, SmartCraft compatible MerCruiser and SmartCraft compatible Mercury Racing product. BULK KIT - Priced individually, sold @ multiples of 24

**SC1000 SYSTEM SPEEDOMETER**



**79-889223K24**

0-80 MPH. Contains System Speedometer air temp sensor and system speedometer harness. White face with black numerals. New descriptive text fault displayed for easier problem recognition. (descriptive text is displayed on all SmartCraft engines Gen I (2007) and newer. Including MerCruiser and Outboard.)  
 Fits 2002 and newer SmartCraft compatible Outboards, SmartCraft compatible MerCruiser and SmartCraft compatible Mercury Racing product.

**79-889223B24**

0-80 MPH. Contains System Speedometer air temp sensor and system speedometer harness. White face with black numerals. New descriptive text fault displayed for easier problem recognition. (descriptive text is displayed on all SmartCraft engines Gen I (2007) and newer. Including MerCruiser and Outboard.) Bulk 24 Pack  
 Fits 2002 and newer SmartCraft compatible Outboards, SmartCraft compatible MerCruiser and SmartCraft compatible Mercury Racing product.. BULK KIT - Priced individually, sold @ multiples of 24

**SC1000 SYSTEM SPEEDOMETER**



**79-889223K27**

0-50 MPH. Contains System Speedometer air temp sensor and system speedometer harness. White face with black numerals. New descriptive text fault displayed for easier problem recognition. (descriptive text is displayed on all SmartCraft engines Gen I (2007) and newer. Including MerCruiser and Outboard.)  
 Fits 2002 and newer SmartCraft compatible Outboards, SmartCraft compatible MerCruiser and SmartCraft compatible Mercury Racing product.

**SC 100 SYSTEM GAUGES**

**SC 100 SYSTEM LINK TACHOMETER**



**79-879903K 1**

8,000 RPM tachometer, gray face. Fits in a standard 3-3/8" (85 mm) dia. hole. Fits 2001 and newer OptiMax Outboards, 2002 and newer V-6 EFI, 30-60 EFI 4-Stroke, all SmartCraft compatible MerCruiser and Mercury Racing product when these models have the 555 ECM. Application of this gauge will depend on the individual engine model and its available sensors.

**SC 100 SYSTEM LINK TACHOMETER**



**79-879903K31**

8,000 RPM tachometer, white face with Chrome Bezel. Fits in a standard 3-3/8" (85 mm) dia. hole. Fits 2001 and newer OptiMax Outboards, 2002 and newer V-6 EFI, 30-60 EFI 4-Stroke, all SmartCraft compatible MerCruiser and Mercury Racing product when these models have the 555 ECM. Application of this gauge will depend on the individual engine model and its available sensors.

**SC 100 SYSTEM LINK TACHOMETER**



**79-879904K 1**

6,000 RPM tachometer, gray face. Fits in a standard 3-3/8" (85 mm) dia. hole. Fits 2001 and newer OptiMax Outboards, 2002 and newer V-6 EFI, 30-60 EFI 4-Stroke, all SmartCraft compatible MerCruiser and Mercury Racing product when these models have the 555 ECM. Application of this gauge will depend on the individual engine model and its available sensors.

## SC 100 SYSTEM LINK TACHOMETER



**79-879904K31**

6,000 RPM tachometer, white face with Chrome Bezel. Fits in a standard 3-3/8" (85 mm) dia. hole.

Fits 2001 and newer OptiMax Outboards, 2002 and newer V-6 EFI, 30-60 EFI 4-Stroke, all SmartCraft compatible MerCruiser and Mercury Racing product when these models have the 555 ECM. Application of this gauge will depend on the individual engine model and its available sensors.

## SC 100 SYSTEM LINK SPEEDOMETER



**79-879906K 1**

120 (mph or km/h) speedometer, gray face. Fits in a standard 3-3/8" (85 mm) dia. hole.

Fits 2001 and newer OptiMax Outboards, 2002 and newer V-6 EFI, 30-60 EFI 4-Stroke, all SmartCraft compatible MerCruiser and Mercury Racing product when these models have the 555 ECM. Application of this gauge will depend on the individual engine model and its available sensors.

## SC 100 SYSTEM LINK SPEEDOMETER



**79-879905K 1**

80 (mph or km/h) speedometer, gray face. Fits in a standard 3-3/8" (85 mm) dia. hole.

Fits 2001 and newer OptiMax Outboards, 2002 and newer V-6 EFI, 30-60 EFI 4-Stroke, all SmartCraft compatible MerCruiser and Mercury Racing product when these models have the 555 ECM. Application of this gauge will depend on the individual engine model and its available sensors.

## SC 100 SYSTEM LINK ENGINE TEMPERATURE GAUGE



**79-879907K 1**

Metric version engine temperature gauge, gray face. Fits a standard 2-1/8 in. (52 mm) dia. hole.

Fits 2001 and newer OptiMax Outboards, 2002 and newer V-6 EFI, 30-60 EFI 4-Stroke, all SmartCraft compatible MerCruiser and Mercury Racing product when these models have the 555 ECM. Application of this gauge will depend on the individual engine model and its available sensors.

## SC 100 SYSTEM LINK SPEEDOMETER



**79-879905K31**

80 (mph or km/h) speedometer, white face. With Chrome Bezel. Fits in a standard 3-3/8" (85 mm) dia. hole.

Fits 2001 and newer OptiMax Outboards, 2002 and newer V-6 EFI, 30-60 EFI 4-Stroke, all SmartCraft compatible MerCruiser and Mercury Racing product when these models have the 555 ECM. Application of this gauge will depend on the individual engine model and its available sensors.

## SC 100 SYSTEM LINK OIL TEMPERATURE GAUGE



**79-879908K 1**

English version oil temperature gauge, gray face. Fits a standard 2-1/8 in. (52 mm) dia. hole.

Fits 2001 and newer OptiMax Outboards, 2002 and newer V-6 EFI, 30-60 EFI 4-Stroke, all SmartCraft compatible MerCruiser and Mercury Racing product when these models have the 555 ECM. Application of this gauge will depend on the individual engine model and its available sensors.

**SC 100 SYSTEM LINK OIL TEMPERATURE GAUGE**



**79-879908K31**

English version oil temperature gauge, white face with Chrome Bezel. Fits a standard 2-1/8 in. (52 mm) dia. hole.

Fits 2001 and newer OptiMax Outboards, 2002 and newer V-6 EFI, 30-60 EFI 4-Stroke, all SmartCraft compatible MerCruiser and Mercury Racing product when these models have the 555 ECM. Application of this gauge will depend on the individual engine model and its available sensors.

**SC 100 SYSTEM LINK FUEL LEVEL GAUGE**



**79-879910K31**

Fuel level gauge, white face with Chrome Bezel. Fits a standard 2-1/8 in. (52 mm) dia. hole.

Fits 2001 and newer OptiMax Outboards, 2002 and newer V-6 EFI, 30-60 EFI 4-Stroke, all SmartCraft compatible MerCruiser and Mercury Racing product when these models have the 555 ECM. Application of this gauge will depend on the individual engine model and its available sensors.

**SC 100 SYSTEM LINK OIL TEMPERATURE GAUGE**



**79-879909K 1**

Metric version oil temperature gauge, gray face. Fits a standard 2-1/8 in. (52 mm) dia. hole.

Fits 2001 and newer OptiMax Outboards, 2002 and newer V-6 EFI, 30-60 EFI 4-Stroke, all SmartCraft compatible MerCruiser and Mercury Racing product when these models have the 555 ECM. Application of this gauge will depend on the individual engine model and its available sensors.

**SC 100 SYSTEM LINK OIL LEVEL GAUGE**



**79-879911K 1**

Oil level gauge, gray face. Fits a standard 2-1/8 in. (52 mm) dia. hole.

Fits 2001 and newer OptiMax Outboards, 2002 and newer V-6 EFI, 30-60 EFI 4-Stroke, all SmartCraft compatible MerCruiser and Mercury Racing product when these models have the 555 ECM. Application of this gauge will depend on the individual engine model and its available sensors.

**SC 100 SYSTEM LINK FUEL LEVEL GAUGE**



**79-879910K 1**

Fuel level gauge, gray face. Fits a standard 2-1/8 in. (52 mm) dia. hole.

Fits 2001 and newer OptiMax Outboards, 2002 and newer V-6 EFI, 30-60 EFI 4-Stroke, all SmartCraft compatible MerCruiser and Mercury Racing product when these models have the 555 ECM. Application of this gauge will depend on the individual engine model and its available sensors.

**SC 100 SYSTEM LINK OIL LEVEL GAUGE**



**79-879911K31**

Oil level gauge, white face with Chrome Bezel. Fits a standard 2-1/8 in. (52 mm) dia. hole.

Fits 2001 and newer OptiMax Outboards, 2002 and newer V-6 EFI, 30-60 EFI 4-Stroke, all SmartCraft compatible MerCruiser and Mercury Racing product when these models have the 555 ECM. Application of this gauge will depend on the individual engine model and its available sensors.



## SC 100 SYSTEM LINK FUEL FLOW GAUGE



**79-879912K 1**

English version fuel flow gauge, gray face. Fits a standard 2-1/8 in. (52 mm) dia. hole.

Fits 2001 and newer OptiMax Outboards, 2002 and newer V-6 EFI, 30-60 EFI 4-Stroke, all SmartCraft compatible MerCruiser and Mercury Racing product when these models have the 555 ECM. Application of this gauge will depend on the individual engine model and its available sensors.

## SC 100 SYSTEM LINK FUEL FLOW GAUGE



**79-879912K31**

English version fuel flow gauge, white face with Chrome Bezel. Fits a standard 2-1/8 in. (52 mm) dia. hole.

Fits 2001 and newer OptiMax Outboards, 2002 and newer V-6 EFI, 30-60 EFI 4-Stroke, all SmartCraft compatible MerCruiser and Mercury Racing product when these models have the 555 ECM. Application of this gauge will depend on the individual engine model and its available sensors.

## SC 100 SYSTEM LINK FUEL FLOW GAUGE



**79-879913K 1**

Metric version fuel flow gauge, gray face. Fits a standard 2-1/8 in. (52 mm) dia. hole.

Fits 2001 and newer OptiMax Outboards, 2002 and newer V-6 EFI, 30-60 EFI 4-Stroke, all SmartCraft compatible MerCruiser and Mercury Racing product when these models have the 555 ECM. Application of this gauge will depend on the individual engine model and its available sensors.

## SC 100 SYSTEM LINK TRIM GAUGE



**79-879914K 1**

Trim gauge, gray face. Fits a standard 2-1/8 in. (52 mm) dia. hole.

Fits 2001 and newer OptiMax Outboards, 2002 and newer V-6 EFI, 30-60 EFI 4-Stroke, all SmartCraft compatible MerCruiser and Mercury Racing product when these models have the 555 ECM. Application of this gauge will depend on the individual engine model and its available sensors.

## SC 100 SYSTEM LINK TRIM GAUGE



**79-879914K31**

Trim gauge, white face with Chrome Bezel. Fits a standard 2-1/8 in. (52 mm) dia. hole.

Fits 2001 and newer OptiMax Outboards, 2002 and newer V-6 EFI, 30-60 EFI 4-Stroke, all SmartCraft compatible MerCruiser and Mercury Racing product when these models have the 555 ECM. Application of this gauge will depend on the individual engine model and its available sensors.

## SC 100 SYSTEM LINK RUDDER ANGLE GAUGE



**79-879915K 1**

Steering gauge, gray face. Fits a standard 2-1/8 in. (52 mm) dia. hole.

Fits 2001 and newer OptiMax Outboards, 2002 and newer V-6 EFI, 30-60 EFI 4-Stroke, all SmartCraft compatible MerCruiser and Mercury Racing product when these models have the 555 ECM. Application of this gauge will depend on the individual engine model and its available sensors.

**SC 100 SYSTEM LINK RUDDER ANGLE GAUGE**



**79-879915K31**

Steering gauge, white face/chrome bezel. Fits a standard 2-1/8 in. (52 mm) dia. hole.

Fits 2001 and newer OptiMax Outboards, 2002 and newer V-6 EFI, 30-60 EFI 4-Stroke, all SmartCraft compatible MerCruiser and Mercury Racing product when these models have the 555 ECM. Application of this gauge will depend on the individual engine model and its available sensors.

**SC 100 SYSTEM LINK OIL PRESSURE GAUGE**



**79-879917K 1**

Metric version oil pressure gauge, gray face. Fits a standard 2-1/8 in. (52 mm) dia. hole.

Fits 2001 and newer OptiMax Outboards, 2002 and newer V-6 EFI, 30-60 EFI 4-Stroke, all SmartCraft compatible MerCruiser and Mercury Racing product when these models have the 555 ECM. Application of this gauge will depend on the individual engine model and its available sensors.

**SC 100 SYSTEM LINK OIL PRESSURE GAUGE**



**79-879916K 1**

English version oil pressure gauge, gray face. Fits a standard 2-1/8 in. (52 mm) dia. hole.

Fits 2001 and newer OptiMax Outboards, 2002 and newer V-6 EFI, 30-60 EFI 4-Stroke, all SmartCraft compatible MerCruiser and Mercury Racing product when these models have the 555 ECM. Application of this gauge will depend on the individual engine model and its available sensors.

**SC 100 SYSTEM LINK WATER PRESSURE GAUGE**



**79-879918K 1**

English version water pressure gauge, gray face. Fits a standard 2-1/8 in. (52 mm) dia. hole.

Fits 2001 and newer OptiMax Outboards, 2002 and newer V-6 EFI, 30-60 EFI 4-Stroke, all SmartCraft compatible MerCruiser and Mercury Racing product when these models have the 555 ECM. Application of this gauge will depend on the individual engine model and its available sensors.

**SC 100 SYSTEM LINK OIL PRESSURE GAUGE**



**79-879916K31**

English version oil pressure gauge, white face with Chrome Bezel. Fits a standard 2-1/8 in. (52 mm) dia. hole.

Fits 2001 and newer OptiMax Outboards, 2002 and newer V-6 EFI, 30-60 EFI 4-Stroke, all SmartCraft compatible MerCruiser and Mercury Racing product when these models have the 555 ECM. Application of this gauge will depend on the individual engine model and its available sensors.

**SC 100 SYSTEM LINK WATER PRESSURE GAUGE**



**79-879918K31**

English version water pressure gauge, white face with Chrome Bezel. Fits a standard 2-1/8 in. (52 mm) dia. hole.

Fits 2001 and newer OptiMax Outboards, 2002 and newer V-6 EFI, 30-60 EFI 4-Stroke, all SmartCraft compatible MerCruiser and Mercury Racing product when these models have the 555 ECM. Application of this gauge will depend on the individual engine model and its available sensors.

**SC 100 SYSTEM LINK WATER PRESSURE GAUGE**



**79-879919K 1**

Metric version water pressure gauge, gray face. Fits a standard 2-1/8 in. (52 mm) dia. hole.

Fits 2001 and newer OptiMax Outboards, 2002 and newer V-6 EFI, 30-60 EFI 4-Stroke, all SmartCraft compatible MerCruiser and Mercury Racing product when these models have the 555 ECM. Application of this gauge will depend on the individual engine model and its available sensors.

**SC 100 SYSTEM LINK ENGINE TEMPERATURE GAUGE**



**79-879920K 1**

English version engine temperature gauge, gray face. Fits a standard 2-1/8 in. (52 mm) dia. hole.

Fits 2001 and newer OptiMax Outboards, 2002 and newer V-6 EFI, 30-60 EFI 4-Stroke, all SmartCraft compatible MerCruiser and Mercury Racing product when these models have the 555 ECM. Application of this gauge will depend on the individual engine model and its available sensors.

**SC 100 SYSTEM LINK ENGINE TEMPERATURE GAUGE**



**79-879920K31**

English version engine temperature gauge, white face with Chrome Bezel. Fits a standard 2-1/8 in. (52 mm) dia. hole.

Fits 2001 and newer OptiMax Outboards, 2002 and newer V-6 EFI, 30-60 EFI 4-Stroke, all SmartCraft compatible MerCruiser and Mercury Racing product when these models have the 555 ECM. Application of this gauge will depend on the individual engine model and its available sensors.

**SC 100 SYSTEM LINK VOLTAGE GAUGE**



**79-879921K 1**

Voltage gauge, gray face. Fits a standard 2-1/8 in. (52 mm) dia. hole.

Fits 2001 and newer OptiMax Outboards, 2002 and newer V-6 EFI, 30-60 EFI 4-Stroke, all SmartCraft compatible MerCruiser and Mercury Racing product when these models have the 555 ECM. Application of this gauge will depend on the individual engine model and its available sensors.

**SC 100 SYSTEM LINK VOLTAGE GAUGE**



**79-879921K31**

Voltage gauge, white face with Chrome Bezel. Fits a standard 2-1/8 in. (52 mm) dia. hole.

Fits 2001 and newer OptiMax Outboards, 2002 and newer V-6 EFI, 30-60 EFI 4-Stroke, all SmartCraft compatible MerCruiser and Mercury Racing product when these models have the 555 ECM. Application of this gauge will depend on the individual engine model and its available sensors.

**SC 100 SYSTEM LINK WATER LEVEL GAUGE**



**79-879922K 1**

Water level gauge, gray face. Fits a standard 2-1/8 in. (52 mm) dia. hole.

Fits 2001 and newer OptiMax Outboards, 2002 and newer V-6 EFI, 30-60 EFI 4-Stroke, all SmartCraft compatible MerCruiser and Mercury Racing product when these models have the 555 ECM. Application of this gauge will depend on the individual engine model and its available sensors.



**SC 100 SYSTEM LINK WASTE LEVEL GAUGE**



**79-879923K 1**

Waste level gauge, gray face. Fits a standard 2-1/8 in. (52 mm) dia. hole. Fits 2001 and newer OptiMax Outboards, 2002 and newer V-6 EFI, 30-60 EFI 4-Stroke, all SmartCraft compatible MerCruiser and Mercury Racing product when these models have the 555 ECM. Application of this gauge will depend on the individual engine model and its available sensors.

**SC 100 SYSTEM LINK FUEL LEVEL GAUGE**



**79-879941K 1**

Fuel level gauge for a second fuel tank, gray face. Fits a standard 2-1/8 in. (52 mm) dia. hole. Fits 2001 and newer OptiMax Outboards, 2002 and newer V-6 EFI, 30-60 EFI 4-Stroke, all SmartCraft compatible MerCruiser and Mercury Racing product when these models have the 555 ECM. Application of this gauge will depend on the individual engine model and its available sensors.

**SC 100 SYSTEM LINK ENGINE SYNCHRONIZER GAUGE**



**79-879924K 1**

Engine synchronizer gauge, gray face. Fits a standard 2-1/8 in. (52 mm) dia. hole. Fits 2001 and newer OptiMax Outboards, 2002 and newer V-6 EFI, 30-60 EFI 4-Stroke, all SmartCraft compatible MerCruiser and Mercury Racing product when these models have the 555 ECM. Application of this gauge will depend on the individual engine model and its available sensors.

**SC 100 SYSTEM LINK TACHOMETER**



**79-879942K 1**

6,000 RPM tachometer, gray face, large display. Fits in a 4-5/16" (110 mm) dia. hole. Fits 2001 and newer OptiMax Outboards, 2002 and newer V-6 EFI, 30-60 EFI 4-Stroke, all SmartCraft compatible MerCruiser and Mercury Racing product when these models have the 555 ECM. Application of this gauge will depend on the individual engine model and its available sensors.

**SC 100 SYSTEM LINK ENGINE SYNCHRONIZER GAUGE**



**79-879924K31**

Engine synchronizer gauge, white face with Chrome bezel. Fits a standard 2-1/8 in. (52 mm) dia. hole. Fits 2001 and newer OptiMax Outboards, 2002 and newer V-6 EFI, 30-60 EFI 4-Stroke, all SmartCraft compatible MerCruiser and Mercury Racing product when these models have the 555 ECM. Application of this gauge will depend on the individual engine model and its available sensors.

**SC 100 SYSTEM LINK TACHOMETER**



**79-879943K 1**

8,000 RPM tachometer, gray face, large display. Fits in a 4-5/16" (110 mm) dia. hole. Fits 2001 and newer OptiMax Outboards, 2002 and newer V-6 EFI, 30-60 EFI 4-Stroke, all SmartCraft compatible MerCruiser and Mercury Racing product when these models have the 555 ECM. Application of this gauge will depend on the individual engine model and its available sensors.

**SMARTCRAFT**

**SC 100 SYSTEM LINK SPEEDOMETER**



**79-879944K21**

50 (mph or km/h) speedometer, Black Chrome Bezel, large display. Fits in a 4-5/16" (110 mm) dia. hole.

Fits 2001 and newer OptiMax Outboards, 2002 and newer V-6 EFI, 30-60 EFI 4-Stroke, all SmartCraft compatible Mercruiser and Mercury Racing product when these models have the 555 ECM. Application of this gauge will depend on the individual engine model and its available sensors. Gen I will have descriptive fault text available on gauge.

**SC 100 SYSTEM LINK SPEEDOMETER**



**79-879945K 1**

80 (mph or km/h) speedometer, gray face, large display. Fits in a 4-5/16" (110 mm) dia. hole.

Fits 2001 and newer OptiMax Outboards, 2002 and newer V-6 EFI, 30-60 EFI 4-Stroke, all SmartCraft compatible Mercruiser and Mercury Racing product when these models have the 555 ECM. Application of this gauge will depend on the individual engine model and its available sensors.

**SC 100 SYSTEM LINK MULTIFUNCTION GAUGE**



**79-879946K 1**

Combination water temperature, oil pressure, voltage and fuel gauge. Gray face, large display. Fits in a 4-5/16" (110 mm) dia. hole.

Fits 2001 and newer OptiMax Outboards, 2002 and newer V-6 EFI, 30-60 EFI 4-Stroke, all SmartCraft compatible Mercruiser and Mercury Racing product when these models have the 555 ECM. Application of this gauge will depend on the individual engine model and its available sensors.

**SC 100 SYSTEM GAUGE W/O BEZEL**

Gauges sold without bezel.

**4 IN 1 GAUGE**



**79-8M0052858**

4 IN 1 gauge, black face, glass lens. Fits 110mm dia. hole.

Fits 2001 and newer Optimax Outboards, 2002 and newer V-6 EFI, 30-60 EFI 4-stroke, Verado, all SmartCraft compatible Mercruiser and Mercury Racing product when these models have the 555 ECM. Application of this gauge will depend on the individual engine model and its available sensors.

BEZEL SOLD SEPERATELY. Used on all SmartCraft capable engines

**4 IN 1 GAUGE**



**79-8M0052879**

4 IN 1 gauge, white face, glass lens. Fits 110mm hole.

Fits 2001 and newer Optimax Outboards, 2002 and newer V-6 EFI, 30-60 EFI 4-stroke, Verado, all SmartCraft compatible Mercruiser and Mercury Racing product when these models have the 555 ECM. Application of this gauge will depend on the individual engine model and its available sensors.

BEZEL SOLD SEPERATELY. Used on all SmartCraft capable engines

**SYSTEM LINK KIT GRAY**



**79-892821K02**

Great Value Kit for rigging a digital dash. Kit includes link harness (892821K01), tach - 8K (879903K1), speedo - 80 MPH (879905K 1), temp. (879920K1), volt (879921K1), fuel (879910K1) and trim (879914K1). This kit can be connected with the link harness directly to the engines PCM. Eliminates the need for the full function SC1000 Monitor, SC1000 Tach/Speed or SC5000 System View. 2005 DTS engines including Verado

**SYSTEM LINK KIT WHITE**



**79-892821K03**

Great Value Kit for rigging a digital dash. Kit includes link harness (892821K01), tach - 8K (879903K11), speedo - 80 MPH (879905K11), temp. (879920K11), volt (879921K11), fuel (879910K11) and trim (879914K11). This kit can be connected with the link harness directly to the engines PCM. Eliminates the need for the full function SC1000 Monitor, SC1000 Tach/Speed or SC5000 System View. 2005 DTS engines including Verado

**TACHOMETER**



**79-8M0052854**

7000 RPM Tach gauge, black face, glass lens. Fits 85mm dia. hole.

Fits 2001 and newer Optimax Outboards, 2002 and newer V-6 EFI, 30-60 EFI 4-stroke, Verado, all SmartCraft compatible Mercruiser and Mercury Racing product when these models have the 555 ECM. Application of this gauge will depend on the individual engine model and its available sensors. BEZEL SOLD SEPERATELY. Used on all SmartCraft capable engines

**TACHOMETER**



**79-8M0052855**

4000 RPM Tach gauge, black face, glass lens. Fits 110mm dia. hole.

Fits 2001 and newer Optimax Outboards, 2002 and newer V-6 EFI, 30-60 EFI 4-stroke, Verado, all SmartCraft compatible Mercruiser and Mercury Racing product when these models have the 555 ECM. Application of this gauge will depend on the individual engine model and its available sensors. BEZEL SOLD SEPERATELY. Used on all SmartCraft capable engines

**TACHOMETER**



**79-8M0052856**

7000 RPM Tach gauge, black face, glass lens. Fits 110mm dia. hole.

Fits 2001 and newer Optimax Outboards, 2002 and newer V-6 EFI, 30-60 EFI 4-stroke, Verado, all SmartCraft compatible Mercruiser and Mercury Racing product when these models have the 555 ECM. Application of this gauge will depend on the individual engine model and its available sensors. BEZEL SOLD SEPERATELY. Used on all SmartCraft capable engines

**TACHOMETER**



**79-8M0052875**

7000 RPM tach gauge, white face, glass lens. Fits 85 mm dia. hole.

Fits 2001 and newer Optimax Outboards, 2002 and newer V-6 EFI, 30-60 EFI 4-stroke, Verado, all SmartCraft compatible Mercruiser and Mercury Racing product when these models have the 555 ECM. Application of this gauge will depend on the individual engine model and its available sensors. BEZEL SOLD SEPERATELY. Used on all SmartCraft capable engines

**TACHOMETER**



**79-8M0052876**

4000 RPM tach gauge, white face, glass lens. Fits 110mm dia. hole.

Fits 2001 and newer Optimax Outboards, 2002 and newer V-6 EFI, 30-60 EFI 4-stroke, Verado, all SmartCraft compatible Mercruiser and Mercury Racing product when these models have the 555 ECM. Application of this gauge will depend on the individual engine model and its available sensors. BEZEL SOLD SEPERATELY. Used on all SmartCraft capable engines

## TACHOMETER



**79-8M0052877**

7000 RPM tach gauge, white face, glass lens. Fits a 110mm dia. hole.

For use on 2001 and newer Optimax Outboards, 2002 and newer V-6 EFI, 30-60 EFI 4-stroke, Verado, all SmartCraft compatible Mercruiser and Mercury Racing product when these models have the 555 ECM. Application of this gauge will depend on the individual engine model and its available sensors.

BEZEL SOLD SEPERATELY. Used on all SmartCraft capable engines

## SPEEDOMETER



**79-8M0052874**

80 MPH speed gauge, white face, glass lens. Fits 85mm dia. hole.

Fits 2001 and newer Optimax Outboards, 2002 and newer V-6 EFI, 30-60 EFI 4-stroke, Verado, all SmartCraft compatible Mercruiser and Mercury Racing product when these models have the 555 ECM. Application of this gauge will depend on the individual engine model and its available sensors.

BEZEL SOLD SEPERATELY. Used on all SmartCraft capable engines

## SPEEDOMETER



**79-8M0052853**

80 MPH Speed gauge, black face, glass lens. Fits 85mm dia. hole.

Fits 2001 and newer Optimax Outboards, 2002 and newer V-6 EFI, 30-60 EFI 4-stroke, Verado, all SmartCraft compatible Mercruiser and Mercury Racing product when these models have the 555 ECM. Application of this gauge will depend on the individual engine model and its available sensors.

BEZEL SOLD SEPERATELY. Used on all SmartCraft capable engines

## SPEEDOMETER



**79-8M0052878**

80 MPH speed gauge, white face, glass lens. Fits a 110mm dia. hole.

or use on 2001 and newer Optimax Outboards, 2002 and newer V-6 EFI, 30-60 EFI 4-stroke, Verado, all SmartCraft compatible Mercruiser and Mercury Racing product when these models have the 555 ECM. Application of this gauge will depend on the individual engine model and its available sensors.

BEZEL SOLD SEPERATELY. Used on all SmartCraft capable engines

## SPEEDOMETER



**79-8M0052857**

80 MPH speed gauge, black face, glass lens. Fits 110mm dia. hole.

Fits 2001 and newer Optimax Outboards, 2002 and newer V-6 EFI, 30-60 EFI 4-stroke, Verado, all SmartCraft compatible Mercruiser and Mercury Racing product when these models have the 555 ECM. Application of this gauge will depend on the individual engine model and its available sensors.

BEZEL SOLD SEPERATELY. Used on all SmartCraft capable engines

## VOLTAGE GAUGE



**79-8M0052843**

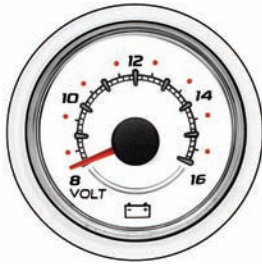
Voltage gauge, black face, glass lens. Fits a standard 2-1/8" (52mm) dia. hole.

Fits 2001 and newer Optimax Outboards, 2002 and newer V-6 EFI, 30-60 EFI 4-stroke, Verado, all SmartCraft compatible Mercruiser and Mercury Racing product when these models have the 555 ECM. Application of this gauge will depend on the individual engine model and its available sensors.

BEZEL SOLD SEPERATELY. Used on all SmartCraft capable engines



**VOLTAGE GAUGE**



**79-8M0052864**

Voltage gauge, white face, glass lens. Fits a standard 2-1/8" (52mm) dia. hole.

Fits 2001 and newer Optimax Outboards, 2002 and newer V-6 EFI, 30-60 EFI 4-stroke, Verado, all SmartCraft compatible Mercruiser and Mercury Racing product when these models have the 555 ECM. Application of this gauge will depend on the individual engine model and its available sensors  
BEZEL SOLD SEPERATELY. Used on all SmartCraft capable engines

**WASTE LEVEL GAUGE**



**79-8M0052868**

Waste Level Gauge, white face, glass lens. Fits a standard 2-1/8" (52mm) dia. hole.

Fits 2001 and newer Optimax Outboards, 2002 and newer V-6 EFI, 30-60 EFI 4-stroke, Verado, all SmartCraft compatible Mercruiser and Mercury Racing product when these models have the 555 ECM. Application of this gauge will depend on the individual engine model and its available sensors.  
BEZEL SOLD SEPERATELY. Used on all SmartCraft capable engines

**WASTE LEVEL GAUGE**

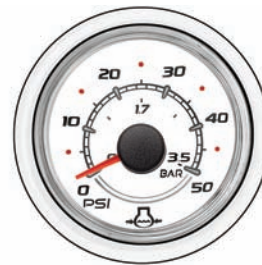


**79-8M0052847**

Waste Level gauge, black face, glass lens. Fits a standard 2-1/8" (52mm) dia. hole.

Fits 2001 and newer Optimax Outboards, 2002 and newer V-6 EFI, 30-60 EFI 4-stroke, Verado, all SmartCraft compatible Mercruiser and Mercury Racing product when these models have the 555 ECM. Application of this gauge will depend on the individual engine model and its available sensors.  
BEZEL SOLD SEPERATELY. Used on all SmartCraft capable engines

**WATER PRESSURE GAUGE**



**79-8M0052871**

Dual scale (English and Metric) water pressure gauge, white face, glass lens. Fits a standard 2-1/8" (52mm) dia. hole.

Fits 2001 and newer Optimax Outboards, 2002 and newer V-6 EFI, 30-60 EFI 4-stroke, Verado, all SmartCraft compatible Mercruiser and Mercury Racing product when these models have the 555 ECM. Application of this gauge will depend on the individual engine model and its available sensors.  
BEZEL SOLD SEPERATELY. Used on all SmartCraft capable engines

**WATER LEVEL GAUGE**



**79-8M0052867**

Water Level Gauge, white face, glass lens. Fits a standard 2-1/8" (52mm) dia. hole.

Fits 2001 and newer Optimax Outboards, 2002 and newer V-6 EFI, 30-60 EFI 4-stroke, Verado, all SmartCraft compatible Mercruiser and Mercury Racing product when these models have the 555 ECM. Application of this gauge will depend on the individual engine model and its available sensors.  
BEZEL SOLD SEPERATELY. Used on all SmartCraft capable engines

**WATER PRESSURE GAUGE**



**79-8M0052850**

Dual scale (English and Metric) water pressure gauge, black face, glass lens. Fits a standard 2-1/8" (52mm) dia. hole.

Fits 2001 and newer Optimax Outboards, 2002 and newer V-6 EFI, 30-60 EFI 4-stroke, Verado, all SmartCraft compatible Mercruiser and Mercury Racing product when these models have the 555 ECM. Application of this gauge will depend on the individual engine model and its available sensors.  
BEZEL SOLD SEPERATELY. Used on all SmartCraft capable engines

**OIL LEVEL GAUGE**



**79-8M0052852**

Oil Level gauge, black face, glass lens. Fits a standard 2-1/8" (52mm) dia. hole.

Fits 2001 and newer Optimax Outboards, 2002 and newer V-6 EFI, 30-60 EFI 4-stroke, Verado, all SmartCraft compatible Mercruiser and Mercury Racing product when these models have the 555 ECM. Application of this gauge will depend on the individual engine model and its available sensors.

BEZEL SOLD SEPERATELY. Used on all SmartCraft capable engines

**OIL LEVEL GAUGE**



**79-8M0052873**

Oil Level gauge, white face, glass lens. Fits a standard 2-1/8" (52mm) dia. hole.

Fits 2001 and newer Optimax Outboards, 2002 and newer V-6 EFI, 30-60 EFI 4-stroke, Verado, all SmartCraft compatible Mercruiser and Mercury Racing product when these models have the 555 ECM. Application of this gauge will depend on the individual engine model and its available sensors.

Used on all SmartCraft capable engines

**OIL PRESSURE GAUGE**



**79-8M0052848**

Dual scale (English and Metric) oil pressure gauge, black face, glass lens. Fits a standard 2-1/8" (52mm) dia. hole.

Fits 2001 and newer Optimax Outboards, 2002 and newer V-6 EFI, 30-60 EFI 4-stroke, Verado, all SmartCraft compatible Mercruiser and Mercury Racing product when these models have the 555 ECM. Application of this gauge will depend on the individual engine model and its available sensors.

BEZEL SOLD SEPERATELY. Used on all SmartCraft capable engines

**OIL LEVEL GAUGE**



**79-8M0052852**

Oil Level gauge, black face, glass lens. Fits a standard 2-1/8" (52mm) dia. hole.

Fits 2001 and newer Optimax Outboards, 2002 and newer V-6 EFI, 30-60 EFI 4-stroke, Verado, all SmartCraft compatible Mercruiser and Mercury Racing product when these models have the 555 ECM. Application of this gauge will depend on the individual engine model and its available sensors.

BEZEL SOLD SEPERATELY. Used on all SmartCraft capable engines

**OIL PRESSURE GAUGE**



**79-8M0052869**

Dual scale (English and Metric) oil pressure gauge, white face, glass lens. Fits a standard 2-1/8" (52mm) dia. hole.

Fits 2001 and newer Optimax Outboards, 2002 and newer V-6 EFI, 30-60 EFI 4-stroke, Verado, all SmartCraft compatible Mercruiser and Mercury Racing product when these models have the 555 ECM. Application of this gauge will depend on the individual engine model and its available sensors.

BEZEL SOLD SEPERATELY. Used on all SmartCraft capable engines

**OIL TEMPERATURE GAUGE**



**79-8M0054360**

Dual scale (English and Metric) oil temperature gauge, black face, glass lens. Fits a standard 2-1/8" (52mm) dia. hole.

Fits 2001 and newer Optimax Outboards, 2002 and newer V-6 EFI, 30-60 EFI 4-stroke, Verado, all SmartCraft compatible Mercruiser and Mercury Racing product when these models have the 555 ECM. Application of this gauge will depend on the individual engine model and its available sensors.

BEZEL SOLD SEPERATELY. Used on all SmartCraft capable engines



**OIL TEMPERATURE GAUGE**

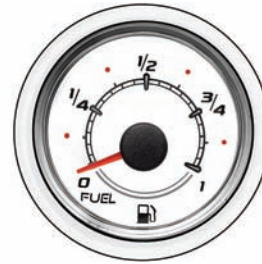


**79-8M0054374**

Dual scale (English and Metric) oil temperature gauge, white face, glass lens. Fits a standard 2-1/8" (52mm) dia. hole.

Fits 2001 and newer Optimax Outboards, 2002 and newer V-6 EFI, 30-60 EFI 4-stroke, Verado, all SmartCraft compatible Mercruiser and Mercury Racing product when these models have the 555 ECM. Application of this gauge will depend on the individual engine model and its available sensors.  
BEZEL SOLD SEPERATELY. Used on all SmartCraft capable engines

**FUEL LEVEL GAUGE**



**79-8M0052865**

Fuel Level Gauge, white face, glass lens. Fits a standard 2-1/8" (52mm) dia. hole.

Fits 2001 and newer Optimax Outboards, 2002 and newer V-6 EFI, 30-60 EFI 4-stroke, Verado, all SmartCraft compatible Mercruiser and Mercury Racing product when these models have the 555 ECM. Application of this gauge will depend on the individual engine model and its available sensors.  
BEZEL SOLD SEPERATELY. Used on all SmartCraft capable engines

**FUEL LEVEL GAUGE**

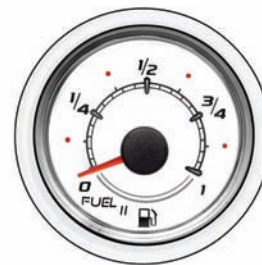


**79-8M0052844**

Fuel Level gauge, black face, glass lens. Fits a standard 2-1/8" (52mm) dia. hole.

Fits 2001 and newer Optimax Outboards, 2002 and newer V-6 EFI, 30-60 EFI 4-stroke, Verado, all SmartCraft compatible Mercruiser and Mercury Racing product when these models have the 555 ECM. Application of this gauge will depend on the individual engine model and its available sensors.  
BEZEL SOLD SEPERATELY. Used on all SmartCraft capable engines

**FUEL LEVEL 2 GAUGE**



**79-8M0052866**

Fuel Level 2 Gauge, white face, glass lens. Fits a standard 2-1/8" (52mm) dia. hole.

Fits 2001 and newer Optimax Outboards, 2002 and newer V-6 EFI, 30-60 EFI 4-stroke, Verado, all SmartCraft compatible Mercruiser and Mercury Racing product when these models have the 555 ECM. Application of this gauge will depend on the individual engine model and its available sensors.  
BEZEL SOLD SEPERATELY. Used on all SmartCraft capable engines

**FUEL LEVEL 2 GAUGE**



**79-8M0052845**

Fuel Level 2 gauge, black face, glass lens. Fits a standard 2-1/8" (52mm) dia. hole.

Fits 2001 and newer Optimax Outboards, 2002 and newer V-6 EFI, 30-60 EFI 4-stroke, Verado, all SmartCraft compatible Mercruiser and Mercury Racing product when these models have the 555 ECM. Application of this gauge will depend on the individual engine model and its available sensors.  
BEZEL SOLD SEPERATELY. Used on all SmartCraft capable engines

**COOLANT TEMPERATURE GAUGE**



**79-8M0052842**

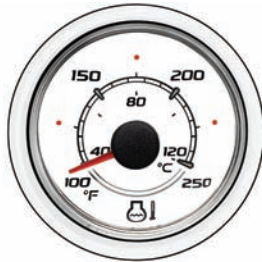
Dual scale (English and Metric) coolant temperature gauge, black face, glass lens. Fits a standard 2-1/8" (52mm) dia. hole.

Fits 2001 and newer Optimax Outboards, 2002 and newer V-6 EFI, 30-60 EFI 4-stroke, Verado, all SmartCraft compatible Mercruiser and Mercury Racing product when these models have the 555 ECM. Application of this gauge will depend on the individual engine model and its available sensors.  
BEZEL SOLD SEPERATELY. Used on all SmartCraft capable engines

**For more information, please contact your local Mercury, Mariner, MerCruiser or Quicksilver Office.**

# SMARTCRAFT

## COOLANT TEMPERATURE GAUGE



**79-8M0052863**

Dual scale (English and Metric) temperature gauge, white face, glass lens. Fits a standard 2-1/8" (52mm) dia. hole.

Fits 2001 and newer Optimax Outboards, 2002 and newer V-6 EFI, 30-60 EFI 4-stroke, Verado, all SmartCraft compatible Mercruiser and Mercury Racing product when these models have the 555 ECM. Application of this gauge will depend on the individual engine model and its available sensors.

BEZEL SOLD SEPERATELY. Used on all SmartCraft capable engines

## TRIM GAUGE



**79-8M0052849**

Trim gauge, black face, glass lens. Fits a standard 2-1/8" (52mm) dia. hole.

Fits 2001 and newer Optimax Outboards, 2002 and newer V-6 EFI, 30-60 EFI 4-stroke, Verado, all SmartCraft compatible Mercruiser and Mercury Racing product when these models have the 555 ECM. Application of this gauge will depend on the individual engine model and its available sensors.

BEZEL SOLD SEPERATELY. Used on all SmartCraft capable engines

## TRIM GAUGE



**79-8M0052870**

Trim gauge, white face, glass lens. Fits a standard 2-1/8" (52mm) dia. hole.

Fits 2001 and newer Optimax Outboards, 2002 and newer V-6 EFI, 30-60 EFI 4-stroke, Verado, all SmartCraft compatible Mercruiser and Mercury Racing product when these models have the 555 ECM. Application of this gauge will depend on the individual engine model and its available sensors.

BEZEL SOLD SEPERATELY. Used on all SmartCraft capable engines

## RUDDER ANGLE GAUGE



**79-8M0052872**

Rudder Angle gauge, white face, glass lens. Fits a standard 2-1/8" (52mm) dia. hole.

Fits 2001 and newer Optimax Outboards, 2002 and newer V-6 EFI, 30-60 EFI 4-stroke, Verado, all SmartCraft compatible Mercruiser and Mercury Racing product when these models have the 555 ECM. Application of this gauge will depend on the individual engine model and its available sensors.

BEZEL SOLD SEPERATELY. Used on all SmartCraft capable engines

## TACH / SPEEDOMETER RIGGING KITS

### SC1000 SYSTEM TACH/SPEED SINGLE ENGINE HELM KIT



**79-889223K36**

(1) 0-7000 RPM gauge and (1) 0-80 Speedometer. Contains speed and tach harnesses, air temp sensor and Junction box for single application. White face with black numerals. Descriptive fault text added. (descriptive text is displayed on all SmartCraft engines Gen I (2007) and newer. Including Mercruiser and Outboard.)

Fits 2002 and newer SmartCraft compatible Outboards, SmartCraft compatible MerCruiser and SmartCraft compatible Mercury Racing product.

### SC1000 SYSTEM TACH/SPEED DUAL ENGINE HELM KIT



**79-889223K37**

SC1000 System series gauge. (2) 0-7000 RPM gauges and (1) 0-80 MPH Speedometer. Contains speed and tach harnesses, J box and air temp sensor for dual application. White face with black numerals. Descriptive fault text added. (descriptive text is displayed on all SmartCraft engines Gen I (2007) and newer. Including Mercruiser and Outboard.)

Fits 2002 and newer SmartCraft compatible Outboards, SmartCraft compatible MerCruiser and SmartCraft compatible Mercury Racing product.

**SC1000 SYSTEM TACH/SPEED SINGLE ENGINE HELM KIT**



**79-8M0063153**

(1) 0-7000 RPM gauge and (1) 0-80 Speedometer. Contains speed and tach harnesses, air temp sensor and Junction box for single engine application. White face with black numerals. Descriptive fault text added. (descriptive text is displayed on all SmartCraft engines Gen I (2007) and newer. Includes MerCruiser and Outboard.) Supports 150 4 stroke Maintenance Feature.  
Fits 2002 and newer SmartCraft compatible Outboards, SmartCraft compatible MerCruiser and SmartCraft compatible Mercury Racing product. BEZEL SOLD SEPERATELY.

**SC1000 SYSTEM TACH/SPEED DUAL ENGINE HELM KIT**



**79-8M0063158**

(2) 0-7000 RPM gauges and (1) 0-80 MPH Speedometer. Contains speed and tach harnesses, J box and air temp sensor for dual application. White face with black numerals. Descriptive fault text added. (descriptive text is displayed on all SmartCraft engines Gen I (2007) and newer. Includes MerCruiser and Outboard.) Supports 150 4 stroke Maintenance Feature.  
Fits 2002 and newer SmartCraft compatible Outboards, SmartCraft compatible MerCruiser and SmartCraft compatible Mercury Racing product. Note: Comes with a 4 way junction box. An additional junction box may need to be purchased depending upon installation needs. BEZEL SOLD SEPERATELY.

**SC1000 SYSTEM TACH/SPEED SINGLE ENGINE HELM KIT**



**79-8M0063160**

(1) 0-7000 RPM gauge and (1) 0-80 Speedometer. Contains speed and tach harnesses, air temp sensor and Junction box for single application. Black face with white numerals. Descriptive fault text added. (descriptive text is displayed on all SmartCraft engines Gen I (2007) and newer. Including MerCruiser and Outboard.)  
Fits 2002 and newer SmartCraft compatible Outboards, SmartCraft compatible MerCruiser and SmartCraft compatible Mercury Racing product. BEZEL SOLD SEPERATELY. Supports 150 4 stroke Maintenance Feature.

**SC1000 SYSTEM TACH/SPEED DUAL ENGINE HELM KIT**



**79-8M0063159**

(2) 0-7000 RPM gauge and (1) 0-80 Speedometer. Contains speed and tach harnesses, air temp sensor and Junction box for dual application. Black face with white numerals. Descriptive fault text added. (descriptive text is displayed on all SmartCraft engines Gen I (2007) and newer. Including MerCruiser and Outboard.)  
Fits 2002 and newer SmartCraft compatible Outboards, SmartCraft compatible MerCruiser and SmartCraft compatible Mercury Racing product. Note: Comes with a 4 way junction box. An additional junction box may need to be purchased depending upon installation needs. BEZEL SOLD SEPERATELY. Supports 150 4 stroke Maintenance Feature.

**SC1000 SYSTEM TACH/SPEED SINGLE ENGINE HELM KIT**



**79-8M0063203**

(1) 0-7000 RPM gauge and (1) 0-80 Speedometer. Contains speed and tach harnesses, air temp sensor and Junction box for single application. Gray face with black numerals. Descriptive fault text added. (descriptive text is displayed on all SmartCraft engines Gen I (2007) and newer. Including MerCruiser and Outboard.) Supports 150 4 stroke Maintenance Feature.  
Fits 2002 and newer SmartCraft compatible Outboards, SmartCraft compatible MerCruiser and SmartCraft compatible Mercury Racing product. Supports 150 4 stroke Maintenance Feature.

**SC1000 SYSTEM TACH/SPEED DUAL ENGINE HELM KIT**



**79-8M0063204**

SC1000 System series gauge. (2) 0-7000 RPM gauges and (1) 0-80 MPH Speedometer. Contains speed and tach harnesses, J box and air temp sensor for dual application. Gray face with black numerals. Descriptive fault text added. (descriptive text is displayed on all SmartCraft engines Gen I (2007) and newer. Including MerCruiser and Outboard.) Supports 150 4 stroke Maintenance Feature.  
Fits 2002 and newer SmartCraft compatible Outboards, SmartCraft compatible MerCruiser and SmartCraft compatible Mercury Racing product. Supports 150 4 stroke Maintenance Feature.

## BEZELS

### BEZEL



#### 879871 2

White  
Fits small 2-1/8 in.(52 mm) O.D. SC100 System Link gauges  
Priced individually, sold @ multiples of 2

#### 879871B 1

Black  
Fits small 2-1/8 in.(52 mm) O.D. SC100 System Link gauges  
Priced individually, sold @ multiples of 24

#### 879871B 2

White  
Fits small 2-1/8 in.(52 mm) O.D. SC100 System Link gauges  
Priced individually, sold @ multiples of 24

#### 879871B 3

Chrome  
Fits small 2-1/8 in.(52 mm) O.D. SC100 System Link gauges  
Priced individually, sold @ multiples of 24

### BEZEL



#### 859074B 1

Black  
Fits large 3-3/8 in.(85 mm) O.D. SC1000 System gauges  
Priced individually, sold @ multiples of 24

#### 859074B 2

White  
Fits large 3-3/8 in.(85 mm) O.D. SC1000 System gauges  
Priced individually, sold @ multiples of 24

#### 859074B 3

Chrome  
Fits large 3-3/8 in.(85 mm) O.D. SC1000 System gauges  
Priced individually, sold @ multiples of 24

## DEPTH/TEMP SENSORS

### DEPTH/SPEED/TEMP TRANSDUCER - TRANSOM MOUNT



#### 79-8M0062104

Mounts to boat's transom and provides depth/speed/temp input to SmartCraft instruments.  
Fits 2002 and newer SmartCraft engines  
Mercury Branded

### DEPTH/TEMP SENSOR/ THRU HULL/ 10 FT



#### 79-8M0062110

10 foot thru hull depth. Fits 2002 and newer SmartCraft engines

### DEPTH/TEMP SENSOR/ THRU HULL/ 19 FT

#### 79-8M0062111

Fits 2001 and newer OptiMax, 2002 and newer V-6 EFI & 30-60 EFI FourStroke and MerCruiser engines having the 555 ECM.

### DEPTH/SPEED/TEMP TRANSDUCER INSERT - THRU HULL



#### 79-8M6001208

Mounts thru boat's hull, provides speed/depth/temp data input to SmartCraft instruments.

\*Must be used with transducer housing part# 879296T01. \*This is not a stand alone part.

**CONNECTING HARDWARE****HARDWARE BAG ASSEMBLY**

Image not  
Available.

56-820386A85

**CAN DATA HARNESS - 10 PIN - NO RESISTORS NON  
DTS (BLUE)**

84-879968T80

80 ft (24.4 meter) SmartCraft data harness without resistors and no additional connections

Provides data link between SmartCraft System CAN Bus Components

**CAN DATA HARNESS - 10 PIN - ONE RESISTOR NON  
DTS (BLUE)**

84-879981T80

80 ft. (24.4 meter) SmartCraft data harness with one resistor

Provides data link between SmartCraft System CAN Bus Components



**RIGGING**

**INSTRUMENTATION - ANALOG**

**TRIM SENSOR CONVERTER KIT**



**8M0059529**

This kit will allow you to convert the signal from the digital sensor to an analog signal. It will allow you to drive an analog gauge for trim only without changing the sensor to an analog sensor. This kit will connect directly to the harness inside the engine cowl.

150 HP 4 Stroke engine only

**ANALOG WATER PRESSURE FITTING KIT**



**32-8M0063663**

Fitting kit to install analog gauge to engine.

150 HP 4 Stroke

**AGI KIT FOR PROVIEW**



**879356K01**

AGI kit that allows the addition of Digital gauges with ProView gauges Mercury ProView Gauges

**INTERNATIONAL II SPEEDOMETER**



**79-895285Q41**

Anti-fog lens. 10-45 MPH . 270 degree dial sweep. Black face and black bezel; orange/white graduations. Includes 20 ft.(6.1 m) of tubing. Fits 3-3/8 in. (85 mm) hole in dash.

Quicksilver Branded, Box Point of Sale Packaged.

**79-895285Q43**

Anti-fog lens. 10-65 MPH . 270 degree dial sweep. Black face and black bezel; orange/white graduations. Includes 20 ft.(6.1 m) of tubing. Fits 3-3/8 in. (85 mm) hole in dash.

Quicksilver Branded, Box Point of Sale Packaged.

**INTERNATIONAL II SPEEDOMETER**



**79-895285Q44**

Anti-fog lens. 10-80 MPH . 270 degree dial sweep. Black face and black bezel; orange/white graduations. Includes 20 ft.(6.1 m) of tubing. Fits 3-3/8 in. (85 mm) hole in dash.

Quicksilver Branded, Box Point of Sale Packaged.

**INTERNATIONAL II SPEEDOMETER**



**79-895285Q48**

Anti-fog lens. 10-50 Knots . 270 degree dial sweep. Black face and black bezel; orange/white graduations. Includes 20 ft.(6.1 m) of tubing. Fits 3-3/8 in. (85 mm) hole in dash.

Quicksilver Branded, Box Point of Sale Packaged.



**INTERNATIONAL II WATER TEMPERATURE GAUGE**



**79-895287Q41**

Anti-fog lens. 100 deg.-240 deg.F gauge. Black face and Black bezel; Orange/White graduations.  
 Fits all MCM/MIE gasoline engines and Mercury/Mariner V-6 outboards. Sender, if not already installed on the outboard, must be purchased separately.  
 Quicksilver Branded, Box Point of Sale Packaged.

**INTERNATIONAL II WATER PRESSURE GAUGE**



**79-895288Q41**

Anti-fog lens. 1 to 15 psi gauge with quick-connect terminals for connection to light. Black face and Black bezel; Orange graduations. Complete kit. Includes 25 ft.(7.6 m) of tubing and hardware.  
 Replacement hose not sold separate, obtain locally.  
 Fits Mercury/Mariner 25/30/40/45/50/75/90/115/225 (4-stroke), all V-6 (except 3.0L 1998 and older) ; and Force 75, 90 and 120. The 75/90/115/225 FourStroke outboards require a reducer fitting p/n 22-86306.  
 Quicksilver Branded, Box Point of Sale Packaged.

**79-895288Q42**

Anti-fog lens. 1 to 15 psi gauge with quick-connect terminals for connection to light. Black face and Black bezel; Orange graduation. Service replacement gauge.  
 Fits Mercury/Mariner 25/30/40/45/50/75/90/115/225 (4-stroke), all V-6 (except 3.0L 1998 and older) ; and Force 75, 90 and 120. The 75/90/115/225 FourStroke outboards require a reducer fitting p/n 22-86306.  
 Quicksilver Branded, Box Point of Sale Packaged.

**INTERNATIONAL II WATER PRESSURE GAUGE**



**79-895288Q43**

Anti-fog lens. 2 to 30 psi gauge with quick-connect terminals for connection to light. Black face and Black bezel; Orange graduations. Complete kit. Includes 25 ft.(7.6 m) of tubing and hardware.  
 Replacement hose not sold separate, obtain locally.  
 Fits Mercury/Mariner 25/30/40/45/50/75/90/115/225 (4-stroke), all V-6 (except 3.0L 1998 and older) ; and Force 75, 90 and 120. The 75/90/115/225 FourStroke outboards require a reducer fitting p/n 22-86306.  
 Quicksilver Branded, Box Point of Sale Packaged.

**79-895288Q44**

Anti-fog lens. 2 to 30 psi gauge with quick-connect terminals for connection to light. Black face and Black bezel; Orange graduations. Service replacement gauge.  
 Fits Mercury/Mariner 25/30/40/45/50/75/90/115/225 (4-stroke), all V-6 (except 3.0L 1998 and older) ; and Force 75, 90 and 120. The 75/90/115/225 FourStroke outboards require a reducer fitting p/n 22-86306.  
 Quicksilver Branded, Box Point of Sale Packaged.

**INTERNATIONAL II WATER PRESSURE GAUGE**



**79-895288Q45**

Anti-fog lens. 2 to 40 psi gauge with quick-connect terminals for connection to light. Black face and Black bezel; Orange graduations. Complete kit. Includes 25 ft.(7.6 m) of tubing and hardware.  
 Replacement hose not sold separate, obtain locally.  
 Fits 75-115 hp EFI FourStroke Outboards, serial number 1B366823 & above.  
 Quicksilver Branded, Box Point of Sale Packaged.

**79-895288Q46**

Anti-fog lens. 2 to 40 psi gauge with quick-connect terminals for connection to light. Black face and Black bezel; Orange graduations. Replacement gauge only.  
 Fits 75-115 hp EFI FourStroke Outboards, serial number 1B366823 & above.  
 Quicksilver Branded, Box Point of Sale Packaged.

**INTERNATIONAL II FUEL GAUGE**



**79-895291Q41**

Anti-fog lens. Black face and Black bezel; Orange/White graduations. Bulk Package of 24 pcs. 12 volt system and 240 ohm sender required.  
 Quicksilver Branded, Box Point of Sale Packaged.

**INTERNATIONAL II TRIM GAUGE**



**79-895292Q41**

Anti-fog lens. Black face and Black bezel; Orange/White graduations. 12 volt system  
 Quicksilver Branded, Box Point of Sale Packaged.

## INTERNATIONAL II DUAL ENGINE SYNCHRONIZER



**79-895294Q41**

Anti-fog lens. Black face and Black bezel; Orange/White graduations. Connects to tachometers.

Fits both 2-stroke and 4-stroke gasoline engine applications.

Quicksilver Branded, Box Point of Sale Packaged.

## INTERNATIONAL II CRUISELOG GAUGE



**79-895295Q41**

Anti-fog lens. Black face and Black bezel; Orange/White graduations. No illumination. Wiring included with this single pack.

Quicksilver Branded, Box Point of Sale Packaged.

## INTERNATIONAL II CLOCK



**79-895297Q41**

Anti-fog lens. Black face and Black bezel; Orange/White graduations. Wiring is included in this single pack.

Quicksilver Branded, Box Point of Sale Packaged.

## STEERING -HYDRAULIC

### HYDRAULIC HELM STEERING FLUID



**92-858078Q01**

For use in MCM compact hydraulic helm steering systems. Also used on Mercury Hydraulic Steering -Verado 135-200 and bolt-on steering system

Priced individually, sold @ multiples of 6

946 mL (32 fl oz) plastic bottle

Quicksilver Branded

### CYLINDER - HYDRAULIC OR POWER STEERING



**898349A11**

Cylinder designed to meet all Power Steering strength and performance requirements. This cylinder is the most robust design in the market. Includes all hardware to mount this cylinder including the strongest bolts to attach to the engine

Verado 135-200 - both Power Steering or Hydraulic

V6/1.5 Opti Max Hydraulic- 1.5L Opti needs to order arm 898082A03 to provide clearance

75-115 4 stroke engines

Multiple

150 4 stroke engines

### CYLINDER - HYDRAULIC OR P/S- COUNTER ROTATION



**898349A14**

Port of counter rotation cylinder designed to meet all Power Steering strength and performance requirements. This cylinder is the most robust design in the market. Includes all hardware to mount this cylinder including the strongest bolts to attach to the engine

Verado 135-200 - both Power Steering or Hydraulic- Multiple Engines

V6/1.5 Opti Max Hydraulic- 1.5L Opti needs to order arm 898082A03 to provide clearance

75-115 4 stroke engines

Multiple OptiMax engines- P/S

150 4

Stroke engines

**CYLINDER - HYDRAULIC - STANDARD**



**8M0054993**

This Basic hydraulic cylinder has the same robust performance design requirement as our heavy duty cylinder. It is qualified to the same 300,000 cycle as our other steering systems, has high strength fasteners, stainless steel arm, heavy duty triple seal cartridges for enhanced durability and longevity high quality fittings using swaged compression style hose connections.

All Single Outboard - 150 HP and below  
(1.5L Opti engine requires the special arm - cylinder 8M0056619)

**CYLINDER WITH COMPRESSION STYLE FITTINGS-PORT**



**8M0056145**

Heavy Duty Hydraulic cylinder counter rotation that uses compression hoses 8M0053474 - 8M005053491. This cylinder is tested to Mercury's rigid standards that include higher loads and cycle testing to 300,000 cycles. It includes machined, high strength fasteners, electro polished SS arm, and heavy duty triple seal cartridges for enhanced durability and longevity

135-300 HP OPTI Max Outboards and 4 Cylinder Verado (Hydraulic only) Use on dual and triple installations (Counter rotation)

**CYLINDER - HYDRAULIC - STANDARD**

Image not Available.

**8M0056619**

This Basic hydraulic cylinder has the same robust performance design requirement as our heavy duty cylinder. It is qualified to the same 300,000 cycle as our other steering systems, has high strength fasteners, stainless steel arm, with a special bend for clearance, heavy duty triple seal cartridges for enhanced durability and longevity. High quality fittings using swaged compression style hose connections.

Mercury OB - 1.5L OptiMax

**HYDRAULIC HELM PUMP - COMPRESSION STYLE FITTINGS**



**8M0056139**

Front Mount Standard helm - 1.5 cu in (25 CC.) displacement. Approximately 5 turns lock to lock on singles (Use Compression style fittings and hoses) and 8 on dual cylinders

Compact design  
Built-in valve for positive rudder lock  
Integral relief valve for over pressure protection- 1500 PSI  
Use with cylinder 8M0050097 and hoses 8M0053474 thru 8M0053492. Use on single or multiple OptiMax powered boats. Use on Verado 4 cylinder Hydraulic steering installation.

**8M0056140**

Front Mount Tilt helm - 1.5 cu in (25 CC.) displacement. Approximately 5 turns lock to lock on singles and 8 on dual cylinders

Compact design  
Built-in valve for positive rudder lock  
Integral relief valve for over pressure protection - 1500 PSI (Use Compression style fittings and hoses)  
Use with cylinder 8M0050097 and hoses 8M0053474 thru 8M0053492. Use on single or multiple OptiMax powered boats. Use on Verado 4 cylinder Hydraulic steering installation.

**8M0056141**

Front Mount Standard helm - 2.0 cu in (33CC.) displacement. Approximately 4.7 turns lock to lock on singles and 7.3 on dual cylinders

Compact design  
Built-in valve for positive rudder lock  
Integral relief valve for over pressure protection - 1500 PSI (Use Compression style fittings and hoses)  
Use with cylinder 8M0050097 and hoses 8M0053474 thru 8M0053492. Use on single or multiple OptiMax powered boats. Use on Verado 4 cylinder Hydraulic steering installation.

**8M0056142**

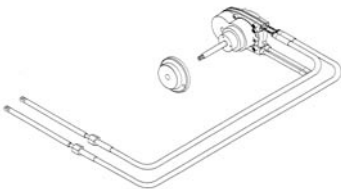
Front Mount Tilt helm - 2.0 cu in (33 CC.) displacement. Approximately 4.7 turns lock to lock on singles and 7.3 on dual cylinders

Compact design  
Built-in valve for positive rudder lock  
Integral relief valve for over pressure protection - 1500 PSI (Use Compression style fittings and hoses)  
Use with cylinder 8M0050097 and hoses 8M0053474 thru 8M0053492. Use on single or multiple OptiMax powered boats. Use on Verado 4 cylinder Hydraulic steering installation.



**STEERING - ROTARY SYSTEM**

**NFB 4.2 ROTARY SYSTEM DUAL CABLE**



**64-802894A12**

12 ft. (3.7m)

**64-802894A13**

13 ft. (4.0m)

**64-802894A14**

14 ft. (4.3m)

**64-802894A15**

15 ft. (4.6m)

**64-802894A16**

16 ft. (4.9m)

**TIE BARS**

**TIE BAR- SINGLE CYLINDER DUAL ENGINE**



**64-8M0063473**

This tie bar can be used on a dual installation with just one cylinder. 26 inch length 75-115 HP EFI 4 Stroke OB (s/n 1B366823 & above), 150 4 Stroke, 135-200 4 cylinder Verado and Opti Max . Use only with Mercury cylinders for dual engine applications

**64-8M0063474**

This tie bar can be used on a dual installation with just one cylinder. 28 inch length 75-115 HP EFI 4 Stroke OB (s/n 1B366823 & above), 150 4 Stroke, 135-200 4 cylinder Verado and Opti Max . Use only with Mercury cylinders for dual engine applications

**64-8M0063475**

This tie bar can be used on a dual installation with just one cylinder. 30 inch length 75-115 HP EFI 4 Stroke OB (s/n 1B366823 & above), 150 4 Stroke, 135-200 4 cylinder Verado and Opti Max . Use only with Mercury cylinders for dual engine applications

**64-8M0063476**

This tie bar can be used on a dual installation with just one cylinder. 32 inch length 75-115 HP EFI 4 Stroke OB (s/n 1B366823 & above), 150 4 Stroke, 135-200 4 cylinder Verado and Opti Max . Use only with Mercury cylinders for dual engine applications

**64-8M0063477**

This tie bar can be used on a dual installation with just one cylinder. 34 inch length 75-115 HP EFI 4 Stroke OB (s/n 1B366823 and above), 150 4 Stroke, 135-200 4 cylinder Verado and Opti Max . Use only with Mercury cylinders for dual engine applications

**ELECTRICAL**

**FUSE**



**88-832969 2**

2 amp mini fuse

**FUSE**



**862646**

5 amp

Among other applications, this fuse can be found in the DTS Power Harness.

**FUSE**



**88-832969T05**

5 amp mini fuse



## FUSE



**862647**

10 amp fuse

## FUSE



**88-832969T25**

25 amp mini fuse

## FUSE



**88-832969 30**

30 amp mini fuse

## LIGHTING COIL KIT



**8M0056548**

Includes the lighting coils and a required new flywheel assembly. Provides AC current.

Fits Mercury/Mariner 4/5/6 FourStroke outboards beginning with 0R426997. Check the application chart as all models do not require this kit.

## HARNESS EXTENSION- 10 PIN



**84-8M0058668**

This harness extension will allow you to increase the length by 6 feet of the 10 pin drop for instruments. The extension will work with Side Mount controls as well as any 896537 series main engine / boat harness.

## KEY SWITCH -3 POSITION WITH DECAL/WASHER



**87-897716K03**

Three position keyswitch with shorter key and mounting length (Off, Run and Start) Loose switch only, 3/4 in. cut out. Includes switch with decal and washer. Matched Key set for Triple engine installs. Can be used on DTS as well as Non DTS installations. Matched keyswitches for Triple installations

**87-897716K04**

Three position keyswitch with shorter key and mounting length (Off, Run and Start) Loose switch only, 3/4 in. cut out. Includes switch with decal and washer. Matched Key set for Quad engine installs. Can be used on DTS as well as Non DTS installations. Matched keyswitches for Quad installations

**87-897716K03**

Three position keyswitch with shorter key and mounting length (Off, Run and Start) Loose switch only, 3/4 in. cut out. Includes switch with decal and washer. Matched Key set for Triple engine installs. Can be used on DTS as well as Non DTS installations. Matched keyswitches for Triple installations

**87-897716K04**

Three position keyswitch with shorter key and mounting length (Off, Run and Start) Loose switch only, 3/4 in. cut out. Includes switch with decal and washer. Matched Key set for Quad engine installs. Can be used on DTS as well as Non DTS installations. Matched keyswitches for Quad installations



**KEYLESS IGNITION SYSTEM**



**87-859659Q 1**

Has "push to choke" feature.  
Fits outboard applications  
Quicksilver Branded, Hanging Box Point of Sale Packaged.

**INSTRUMENT HARNESS MAIN- PROVIEW**



**84-879356T01**

Primary Instrument harness used to connect the ProView gauges to the engine (10 Pin from engine harness)  
Mercury ProView Gauges

**84-8M0059938**

Primary Instrument harness used to connect the ProView gauges to the engine (10 Pin from engine harness) This harness has connections for Tachometere, Speed, trim,volt and fuel only.  
Mercury ProView Gauges

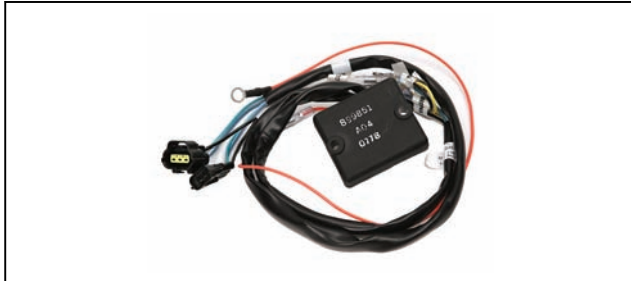
**INSTRUMENT ADAPTER HARNESS**



**84-879356T02**

Used to adapt the ProView main harness to add additional connections  
Mercury ProView Gauges

**TRIM LIMIT SWITCH KIT**



**8M0059532**

Limits the up travel of the power trim to minimize potential interferences when fully tilted. This is an digital device.  
Fits the 150 HP 4 Stroke only

**THEFT DETERRENT SYSTEM**

**MERCURY THEFT DETERRENT SYSTEM (TDS) STAGE 1**



**8M0057383**

Mercurys TDS improves boat and engine security and provides owner ease of mind. The system immobilizes the engine until the Fob is inserted. (Limit to approximately 2000 RPM) Once the Fob is inserted into the docking station; the user will experience normal engine performance. Red or green lights on the docking station indicates lock or unlock condition.

Can be used on all 40-60 4 stroke engines (serial # break is 1C173334) and the new 150 4 Stroke engine. Can also be used on Verado and all MCM DTS ( 2007 and newer) as well as Racing DTS ( Need Version 77 Micro Chi)

**CONTROL MODULE THEFT - MERCURY TDS**



**8M0056987**

Control Module that communicates infromation as part of the Mercury TDS (Theft Deterrent System) Servie replacement part  
Used in kit 8M0057383 See Kit for applications

**RIGGING**

## DECAL THEFT - MERCURY TDS



**37-8M0035724**

Mercury TDS (Theft Deterrent System) Anti theft Decal - 2 each  
Used with Mercury TDS kits

## DOCKING STATION - THEFT - MERCURY TDS



**8M0056994**

Docking station that communicates information as part of the Mercury TDS (Theft Deterrent System) Service replacement part  
Used in kit 8M0057383 See Kit for applications

## FOB - MERCURY TDS (THEFT DETERRENT SYSTEM)



**8M0056988**

Fob replacement kit to activate Theft Deterrent System as part of the Mercury TDS (Theft Deterrent System) Service replacement part  
Used in kit 8M0057383 See Kit for applications

## WIRING HARNESS - THEFT - MERCURY TDS



**84-8M0056993**

Service replacement part.  
Main harness that connects docking station and module as part of the Mercury TDS (Theft Deterrent System)  
Used in kit 8M0057383 See Kit for applications

## MP ALERT

### MODULE, MP ALERT



**8M0052988**

Module used to control the lights on MP Alert.  
Used with MP Alert light system (controller)

### MP ALERT - ADD A LIGHT



**8M0058173**

This kit will allow you to add additional lights to the MP Alert kits. Each kit includes one light and a Y harness to allow you to easily add a third or fourth light on the boat.

Any Mercury 40 HP and up engine that is SmartCraft compatible

### MP ALERT LIGHT



**88-8M0058669**

Service replacement light for the MP Alert kit  
MP Alert

**HARNES EXTENSION MP ALERT**



**84-8M0054183**

Hanres for connecting MP Alert light to front of boat 10 ft MP Alert

**84-8M0054185**

Hanres for connecting MP Alert light to front of boat 20 ft MP Alert

**84-8M0054186**

Hanres for connecting MP Alert light to front of boat 30 ft MP Alert

**84-8M0054187**

Hanres for connecting MP Alert light to front of boat 50 ft MP Alert

**REMOTE CONTROLS**

**BEZEL KIT-CUSTOM UPGRADE**



**891648001**

Woodgrain cover allows you to customize the look of your control. Snap out the black inner bezel and snap in the custom bezel to enrich the appearance of your control.

Use on 4000 Gen II Panel Mount controls- Lock Bar one piece design

**BEZEL KIT-CUSTOM UPGRADE**



**891648002**

Burlwood Gold Woodgrain cover allows you to customize the look of your control. Snap out the black inner bezel and snap in the custom bezel to enrich the appearance of your control.

Use on 4000 Gen II Panel Mount controls- Lock Bar one piece design

**GROMMET - INGRESS**



**8M0062583**

Special Grommet used with Rigging Kits 150 HP 4 Stroke only

**SIDE MOUNT REMOTE CONTROL-14 PIN**



**8M0053636**

The 4000 SMC Control will be used for mounting on the Port side. This control will still have the trim button operated by your little finger as the handle has not ber redesigned. Handle has a mounted power trim switch and a 15 ft. (4.58 m) harness with 14 pin Deutshe connector and will direct connect to the engine models below without the use of an adapter harness.  
 Ref. Throttle/shift cable Gen I - 897977A \_\_ Throttle/Shift cables (896143A) for MY2005 and newer 8/9.9 FourStroke outboards. 8-9.9 4 Stroke engines generation change above S/N OR192772 and new 15/20 4 Stroke engines will use Gen I series T/S Cables  
 2006 - 25- 300 HP 4 Stroke Any engine that has the 14 pin connector from the primary harness. Gen I cables are required with this control Port Mounted

**PANEL MOUNT REMOTE CONTROL-GEN II- LOCK BAR**



**883710A01**

Designed for outboards w/o power trim control. All installations require a separate Ignition/Choke assembly and Throttle/Shift Cables to complete the installation. Neutral safety switch and lanyard stop switch leads have bullet connectors on the ends. Must use Gen II Throttle/Shift Cables design. 897978A \_\_ 8-9.9 4 Stroke engines 2005 and newer will use 896145A series and 8/9.9/generation change above S/N OR192772 and 15/20 4 Stroke will use Gen II series T/S Cables  
 Fits Mercury / Mariner outboards (without power trim), and 1993 and newer Force outboards 40 hp and higher utilizing Mercury style cables (without power trim).  
 Mercury Branded

**For more information, please contact your local Mercury, Mariner, MerCruiser or Quicksilver Office.**

## 883710A02

Comes with 4 ft.(1.22 m) trim harness with the 3 pin Molex connector. All installations require a separate Ignition/Choke assembly and Throttle/Shift Cables to complete the installation. Power trim adapter harness included to convert 3 pin Molex connector to the traditional 3 blade Mercury connector. Neutral safety switch leads are 6.5 ft.(1.98 m) long and have bullet connectors on the ends. Lanyard safety switch leads also have bullet connectors on the ends. Must use Gen II Throttle/Shift Cables design. 897978A\_\_ 8-9.9 4 Stroke engines 2005 and newer will use 896145A series and 8/9.9/generation change above S/N OR192772 and 15/20 4 Stroke will use Gen II series T/S Cable

Fits all current Mercury/Mariner outboards (with integral trim) and 1993 and newer Force outboards 40 hp and higher utilizing Mercury style cables (with power trim). Ref 827270A42, A46, A48

Mercury Branded

## 883710A03

Comes with 4 ft.(1.22 m) trim and trailer switch harness with the 4 pin Molex connector. All installations require a separate Ignition Switch and Throttle/Shift Cables to complete the installation. Neutral safety switch leads are 6.5 ft.(1.98 m) long and have bullet connectors on the ends. Lanyard stop switch leads also have bullet connectors on ends.

A power trim extension harness also needs to be ordered separately: (84-817659A 1 and 84-881125A 1= 4 pin Molex to traditional Mercury 3 blade P/T connector).

(84-865772A01 and 84-865772A02 = 4 pin Molex to the Packard 3 pin P/T connector) Must use Gen II Throttle/Shift Cables design. 897978A\_\_

Fits all MCM and Mercury/Mariner 3.4L outboards with external trim cylinders. (Ref. 827270A43, A47, A49)

Mercury Branded

## CONSOLE MOUNT REMOTE CONTROL-GEN II



## 8M0041425

Designed for dual MIE inboards & outboards without power trim control. All installations require an Ignition/Choke assembly and Throttle/Shift Cables to complete the installation. Must be used with the Gen II Throttle/Shift Cable design. (883719A\_\_ or 897978A\_\_)

Fits MIE inboards & all current Mercury / Mariner outboards (without power trim), and 1993 and newer Force outboards 40 hp and higher utilizing Mercury style cables (without power trim). Ref 877700A1 or 88688A86

## CONSOLE REMOTE CONTROL-GEN II-DUAL



## 8M0041426

Furnished with single trim switch in handle for simultaneous dual engine trim and trailering & individual fine tuning trim buttons in cover. Comes with 2 ft.(.60 m) trim harness with the traditional 3 blade Mercury connector. Applications require separate Ignition/Choke assemblies and Throttle/Shift Cables to complete the installation. Must use Gen II Throttle/Shift Cables design. (897978A\_\_)

Fits all current Mercury/Mariner outboards (with integral trim) and 1993 and newer Force outboards 40 hp and higher utilizing Mercury style cables (with power trim). Ref 877700A 2 and 88688A88

## CONSOLE MOUNT REMOTE CONTROL-GEN II-W/O EXT



## 8M0041428

Furnished with single trim switch in handle for simultaneous dual engine trim and trailering & individual fine tuning trim buttons in cover. Applications require Throttle/Shift Cables to complete the installation. Must use Gen II Throttle/Shift Cable design.(897978A\_\_)

The power trim extension harness also needs to be ordered separately: (84-817659A 1 and 84-881125A 1= 4 pin Molex to traditional Mercury 3 blade P/T connector).

(84-865772A01 and 84-865772A02 = 4 pin Molex to the Packard 3 pin P/T connector)

Fits all MCM and Mercury/Mariner 3.4L outboards with external trim cylinders. Ref 877700A3, 883711A03 or 88688A90

## CONSOLE MOUNT REMOTE CONTROL-GEN II



## 8M0041430

Designed for MIE inboards & outboards without power trim control. All installations require an Ignition/Choke assembly and Throttle/Shift Cables to complete the installation. Must use Gen II Throttle/Shift Cables design. (897978A\_\_)

Fits MIE inboards & all current Mercury/ Mariner outboards (without power trim) and 1993 and newer Force outboards 40 hp and higher utilizing Mercury style cables (without power trim). (Ref 877700A11 or 88688A80)

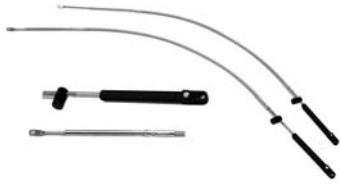
## T/S CABLE- GEN I/SAE -SOLID



## 8M0052509

Throttle and shift cable has a stainless steel core with 16 Lay - Solid core wire. Control end is a traditional Gen I connection and the engine end is a standard SAE threaded end. 30 ft (9.2m)

Must be used with a GEN I remote control and fits Mercury/Mariner 4/5 hp. Model Year 1987 and newer, 4/5/6 hp. FourStroke Model Year 1999 and newer, 8/9.9 hp. FourStroke Model Year 2005 and newer outboards, and Mariner 8 thru 60 hp. outboards of Japanese origin.

**THROTTLE AND SHIFT KIT- 150 4 STROKE****8M0061103**

Includes 2 - T/S cables designed to work with the 150 4 Stroke engine. These cables designed to provide the best installation for these engine family Big Tiller Mechanical units for 150 4 Stroke Engine.

**REMOTE CONTROL CONVERSION KIT**

Image not  
Available.

**8M0062241**

Also requires the addition of electric harness 17162.  
Fits Mercury/Marine 4/5/6 hp. FourStroke outboards, serial number 0R411838 and above.



**PROPELLERS**

**SPITFIRE 25-30 HP**

25-30 HP 4-Stroke outboards 2006 and newer Flo-Torq I Rubber Hub.

**SPITFIRE PROPELLER**



**48-8M8026650**

9.3 X 9.5P RH AL 4 BL

Mercury Branded

**48-8M8026655**

9.3 X 11 RH AL 4 BL

Mercury Branded

**SPITFIRE 40-60 HP**

25 HP BigFoot, 30 HP 4- Stroke (2005 and earlier) 40-60 HP 2-stroke and 4-Stroke outboards.

Equipped with Flo-Torq Reflex Hub system to eliminate clutch rattle.

**SPITFIRE PROPELLER**



**48-8M8026625**

10.6 X 12 RH AL 4 BL

Mercury Branded

**48-8M8026630**

10.3 X 13 RH AL 4 BL

Mercury Branded

**48-8M8026635**

10.1 X 14 RH AL 4 BL

Mercury Branded

**48-8M8026640**

10.1 X 15 RH AL 4 BL

Mercury Branded

**SPITFIRE 40 BIGFOOT - 125 HP**

For 40-60 HP Bigfoot 4-strokes, 75-125 HP 2 and 4-Stroke outboards.

10-13 Pitch propellers are designed for to provide superior holding and lift for pontoon boats

Equipped with Flo-Torq II hub system.

**SPITFIRE PONTOON PROPELLER**



**48-8M8026555**

13.8 X 10 RH AL 4 BL

Mercury Branded

**48-8M8026560**

13.8 X 11 RH AL 4 BL

Mercury Branded

**48-8M8026570**

13.8 X 13 RH AL 4 BL

Mercury Branded

**SPITFIRE PROPELLER**



**48-8M8026580**

13.4 X 15 RH AL 4 BL

Mercury Branded

**48-8M8026590**

13.0 X 17 RH AL 4 BL

Mercury Branded

**48-8M8026600**

12.5 X 19 RH AL 4 BL

Mercury Branded

**THUNDERBOLT**

3-blade stainless performance propeller with more blade area for large boats with big V-6 outboards and V-8 sterndrives  
 Outstanding on Bravo One and TRS sterndrives  
 Good prop for sport/performance style boats as well as cruisers

**THUNDERBOLT**



**QS5004X**

15 1/2 X 17 RH SS 3 BL

**QS5005X**

15 1/2 X 17 LH SS 3 BL

**QS5006X**

15 1/4 X 19 RH SS 3 BL

**QS5007X**

15 1/4 X 19 LH SS 3 BL

**QS5008X**

14 3/4 X 21 RH SS 3 BL

**QS5009X**

14 3/4 X 21 LH SS 3 BL

**QS5010X**

14 5/8 X 23 RH SS 3 BL

**QS5011X**

14 5/8 X 23 LH SS 3 BL

**THUNDERBOLT - FOR VOLVO PENTA IPS DRIVES**

The first performance aftermarket propeller for Volvo Penta IPS drives. Manufactured using 15-5 stainless steel alloy - a material twice as strong as NiBrAl - providing superior durability and reliability. Suitable replacement for Volvo Penta Type T Duo Prop propellers. Replace Type T propellers with Thunderbolt propellers of equivalent size. Available in sizes 7, 5, 4 and 3

**QUICKSILVER THUNDERBOLT IPS**



**48-8M8026390**

Size 3 SS 3 BL - Front  
 Matte Finish

Quicksilver Branded

**48-8M8026400**

Size 3 SS 4 BL - Rear  
 Matte Finish

Quicksilver Branded

**48-8M8026410**

Size 4 SS 3 BL - Front  
 Matte Finish

Quicksilver Branded

**48-8M8026420**

Size 4 SS 4 BL - Rear  
 Matte Finish

Quicksilver Branded

**48-8M8026430**

Size 5 SS 3 BL - Front  
 Matte Finish

Quicksilver Branded

**48-8M8026440**

Size 5 SS 4 BL - Rear  
 Matte Finish

Quicksilver Branded

**48-8M8026470**

Size 7 SS 3 BL - Front  
 Matte Finish

Quicksilver Branded

**48-8M8026480**

Size 7 SS 4 BL - Rear  
 Matte Finish

Quicksilver Branded

For more information, please contact your local Mercury, Mariner, MerCruiser or Quicksilver Office.

# PROPELLERS

## M-SERIES PROPELLERS

### M-SERIES PROPELLER



**48-8M0063951**

M1 5 Blade LH Front Propeller

**48-8M0063952**

M1 4 Blade RH Rear Propeller

## PROP HARDWARE / ACCESSORIES

### PROP NUT



**859939**

Suzuki DT 40-65, 75-115 HP V-4, V-6 (OEM P/N 09141-18005), Yamaha V-4 & V-6 (OEM P/N 90171-18M04-00), Honda 75-115 & FS200-225 HP (OEM P/N 90301-ZW1-B00)

### PROP NUT KIT



**11-8M0056234**

Tab washer and Nut  
Mercury/Mariner 75HP and up and Mercruiser Alpha and Bravo I sterndrives  
Quicksilver Branded, Clamshell Package Point of Sale Packaged.

**11-8M0056235**

Tab washer and nut  
Mercury outboards 75 HP and up and Mercruiser Alpha and Bravo 1 sterndrives  
Mercury Branded, Clamshell Package Point of Sale Packaged.

## WASHER



**12-887972**

Washer

Evinrude/Johnson V6 Outboards and Sterndrives 1991 and newer, Yamaha 150-300 HP 4-Stroke outboards and Honda outboards 75-225HP

Priced individually, sold @ multiples of 2

Quicksilver Branded

## THRUST WASHER



**12-888451**

Forward Thrust Washer

Honda 135-225 HP outboards

Quicksilver Branded

## TAB WASHER



**8M0042130**

For Mercury/Mariner 40-60 hp FourStroke BigFoot, 75-300 hp 2-stroke and 4-stroke outboards, Alpha and Bravo I sterndrives using a stainless steel two pin drive sleeve adapter.

**AFT ADAPTOR - DRIVE SLEEVE**



**8M0061986**

Drive sleeve for use with Flo-Torq III and IV. (15 Spline) Includes pin style tab washer

**DRIVE SLEEVE ADAPTOR**



**8M0063569**

Old style bronze castle adaptor for use with Flo-Torq II plastic Drive Sleeve (15 Spline)

Mercury 40 BigFoot - 250 HP outboards & MerCruiser Alpha and Bravo One Sterndrives, Honda 75 - 225 HP, Suzuki 90 - 140 4-stroke & 150 - 225 HP, Tohatsu/Nissan 40 - 140 HP, Yamaha 50 - 225 HP outboards (1" prop shaft).

Quicksilver Branded, Hanging Box Point of Sale Packaged.

**RUBBER HUB**



**8M0057162**

3.125 in long, 8 splines  
Mariner 9.9-15 HP (Japanese origin)

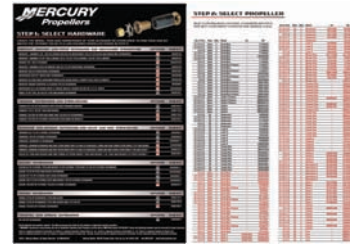
**M8 PROP AERATOR KIT**



**8M8027372**

Needed on certain boat hulls to ventilate the propellor(s) and reduce time to plane. Race M8 stern drives.

**MERCURY FLO-TORQ APPLICATION GUIDE PUBLICATION**



**90-8M0060049**

Mercury "Quick Reference" Flo-Torq II Propeller Application Guide (Packaged quantity 25)

Priced individually, sold @ multiples of 25

**MERCURY PROPELLER CONSUMER BROCHURE**



**90-8M0060095**

Priced individually, sold @ multiples of 25

**PROPELLER GUIDE**



**90-8M0058422**

2012 Mercury Propeller Guide

**For more information, please contact your local Mercury, Mariner, MerCruiser or Quicksilver Office.**

## INFLATABLE BOATS

### DINGHY SERIES

#### DINGHY 200 - LIGHT GREY



##### A-AA200036M

Type of Floor: Air Mattres  
 Color: Light Grey  
 Fabric: PVC  
 Bagged Dimensions SKIN: (cm)100 x 56 x 26  
 Max Load: (lbs)562 (kg)255  
 Max HP (all short shaft): 3.3  
 Max Engine weight: (lbs)44 (kg)20  
 Max Persons: 2  
 Numbers of air chambers: 2+keel+floor  
 Length: (ft) 6 ft 7 in (cm)200  
 Width: (ft) 4 ft 1 in (cm)125  
 Weight: (lbs)35 (kg)20

Mercury Branded

#### DINGHY 240 - LIGHT GREY

##### A-AA240098M

Type of Floor: Air Mattres  
 Color: Light Grey  
 Fabric: PVC  
 Bagged Dimensions SKIN: 100 x 56 x 26  
 Max Load: (lbs)694 (kg)315  
 Max HP (all short shaft): 3.5  
 Max Engine weight: (lbs)44 (kg)20  
 Max Persons: 3  
 Numbers of air chambers: 2+keel+floor  
 Length: (ft)7 ft 10.5 in (cm)240  
 Width: (ft)4 ft 4 in (cm)132  
 Weight: (lbs)44 (kg)23

Mercury Branded

### ULTRA LIGHT

#### ULTRA LIGHT 220 - LIGHT GREY



##### A-AA220009M

Floor Material: X-Stitched Air Floor  
 Type of floor: Air Deck  
 Color: Light Grey/Dark Blue  
 Fabric: PVC  
 Bagged Dimensions SKIN: 102 x 56 x 30 (cm)  
 Max Load: (lbs)948 (kg)430  
 Max HP (all short shaft.\*): 4  
 Max engine weight: (lbs)66 (kg)30  
 Max Persons: 3  
 Number of Air Chambers: 3+keel+floor  
 Length: (ft)5ft (cm)220  
 Width: (ft)7ft 3in (cm)152

Weight including Oars: (lbs)73(kg)33

Mercury Branded

#### ULTRA LIGHT 250 - LIGHT GREY



##### A-AA250023M

Floor Material: X-Stitched Air Floor  
 Type of floor: Air Deck  
 Color: Light Grey/Dark Blue  
 Fabric: PVC  
 Bagged Dimensions SKIN: 102 x 56 x 35(cm)  
 Max Load: (lbs)1060 (kg)481  
 Max HP (all short shaft.\*): 6  
 Max engine weight: (lbs)66 (kg)30  
 Max Persons: 3+1  
 Number of Air Chambers: 3+keel+floor  
 Length: (ft)8ft 3in (cm)250  
 Width: (ft)4ft 9in (cm)152  
 Weight including Oars: (lbs)81 (kg) 37

Mercury Branded



**SPORT SERIES**

**220 SPORT ENDURO - LIGHT GREY**



**A-AA240102M**

Type of Floor: FRP- Fiberglass Reinforced Polymer  
 Color: Light Grey  
 Fabric: PVC  
 Bagged Dimensions SKIN: (cm)102 x 56 x 30  
 Max Load: (lbs)860 (kg)390  
 Max HP (all short shaft): 4  
 Max Engine weight: (lbs) 66 (kg)30  
 Max Persons: 3  
 Numbers of air chambers: 3+keel  
 Length: (ft) 7 ft 3 in (cm)220  
 Width: (ft) 5 ft (cm)154  
 Weight: (lbs)85 (kg)44  
 Mercury Branded

**250 SPORT ENDURO -LIGHT GREY**

**A-AA270104M**

Type of Floor: FRP- Fiberglass Reinforced Polymer  
 Color: Light Grey  
 Fabric: PVC  
 Bagged Dimensions SKIN: (cm)102 x 56 x 35  
 Max Load: (lbs)992 (kg)450  
 Max HP (all short shaft): 8  
 Max Engine weight: (lbs)88 (kg)40  
 Max Persons: 4  
 Numbers of air chambers: 3+keel  
 Length: (ft)8 ft 4in (cm)253  
 Width: (ft)5 ft (cm)154  
 Weight: (lbs)101 (kg)52  
 Mercury Branded

**290 SPORT ENDURO - LIGHT GREY**

**A-AA310097M**

Type of Floor: FRP- Fiberglass Reinforced Polymer  
 Color: Light Grey  
 Fabric: PVC  
 Bagged Dimensions SKIN: (cm)102 x 56 x 40  
 Max Load: (lbs)1146 (kg)520  
 Max HP (all short shaft): 15  
 Max Engine weight: (lbs)132 (kg)60  
 Max Persons: 4  
 Numbers of air chambers: 3+keel  
 Length: (ft) 9 ft 6 in (cm)290  
 Width: (ft) 5 ft (cm)154  
 Weight: (lbs)112 (kg)57  
 Mercury Branded

**320 SPORT ENDURO - LIGHT GREY**

**A-AA340114M**

Type of Floor: FRP- Fiberglass Reinforced Polymer  
 Color: Light Grey  
 Fabric: PVC  
 Bagged Dimensions SKIN: (cm)102 x 56 x 46  
 Max Load: (lbs)1257 (kg)570  
 Max HP (all short shaft): 20  
 Max Engine weight: (lbs)132 (kg)60  
 Max Persons: 5  
 Numbers of air chambers: 3+keel  
 Length: (ft)10ft 6 in (cm)320  
 Width: (ft)5 ft (cm)154  
 Weight: (lbs)124 (kg)62  
 Mercury Branded

**SPORT 365 XS - LIGHT GREY**



**A-AA380090M**

Type of Floor: Aluminum and FRP non-skid  
 Color: Light Grey  
 Fabric: PVC  
 Bagged Dimensions SKIN: (cm) 128 x 62 x 12  
 Bagged Floor: (cm)108 x 64 x 12  
 Max Load: (lbs)1653 (kg)750  
 Max HP (all short shaft): 25  
 Max Engine weight: (lbs)187 (kg)85  
 Max Persons: 6  
 Numbers of air chambers: 3+keel  
 Length: (ft)11 ft 7 in (cm)365  
 Width: (ft)5 ft 9 in (cm)175  
 Weight including Oars: (kg)101  
 Mercury Branded

**SPORT 415 XS - LIGHT GREY**



**A-AA430074M**

Type of Floor: Aluminum and FRP non-skid  
 Color: Light Grey  
 Fabric: PVC  
 Bagged Dimensions SKIN: (cm)145 x 65 x 38  
 Bagged Floor: (cm)113 x 75 x 12  
 Max Load: (lbs)2094 (kg) 950  
 Max HP (all short shaft): 30  
 Max Engine weight: (lbs)187 (kg)85  
 Max Persons: 8  
 Numbers of air chambers: 3+keel  
 Length: (ft)13 ft 7.4 in (cm)415  
 Width: (ft)6 ft 2 in (cm)188  
 Weight  
 Weight including Oars: (kg)121  
 Mercury Branded

For more information, please contact your local Mercury, Mariner, MerCruiser or Quicksilver Office.

## AIR DECK DELUXE

### 220 AIR DECK - WHITE



#### A-AA240103M

Type of Floor: X-stitched air floor  
Color: White  
Fabric: PVC

Bagged Dimensions SKIN: 102 x 56 x 30(cm)  
Max Load: (lbs)1058 (kg)480  
Max HP (all short shaft): 4  
Max Engine weight: (lbs)66 (kg)30  
Max Persons: 3  
Numbers of air chambers: 3+keel+floor  
Length: (ft)7 ft 3 in (cm)220  
Width: (ft)5 ft (cm)154  
Weight: (lbs)70 (kg)37

Mercury Branded

### 250 AIR DECK - WHITE

#### A-AA270108M

Type of Floor: X-stitched air floor  
Color: White  
Fabric: PVC

Bagged Dimensions SKIN: 102 x 56 x 35(cm)  
Max Load: (lbs)1202 (kg)545  
Max HP (all short shaft): 8  
Max Engine weight: (lbs)88 (kg)40  
Max Persons: 4  
Numbers of air chambers: 3+keel+floor  
Length: (ft) 8 ft 4 in (cm)253  
Width: (ft) 5 ft (cm)154  
Weight: (lbs)76 (cm)40

Mercury Branded

### 290 AIR DECK - WHITE

#### A-AA310101M

Type of Floor: X-stitched air floor  
Color: White  
Fabric: PVC

Bagged Dimensions SKIN: 102 x 56 x 40(cm)  
Max Load: (lbs)1400 (kg)635  
Max HP (all short shaft): 15  
Max Engine weight: (lbs)132 (kg)60  
Max Persons: 4  
Numbers of air chambers: 3+keel+floor  
Length: (ft)9 ft 6 in (cm)290  
Width: (ft)5 ft (cm)154  
Weight: (lbs)83 (kg)43

Mercury Branded

### 320 AIR DECK - WHITE

#### A-AA340116M

Type of Floor: X-stitched air floor  
Color: White  
Fabric: PVC

Bagged Dimensions SKIN: 102 x 56 x 46(cm)  
Max Load: (lbs)1477 (kg)670  
Max HP (all short shaft): 20  
Max Engine weight: (lbs)132 (kg)60  
Max Persons: 5  
Numbers of air chambers: 3+keel+floor  
Length: (ft)10 ft 6 in (cm)320  
Width: (ft)5 ft (cm)154  
Weight: (lbs)90 (cm)46

Mercury Branded

## AIR DECK FISHING

### AIR DECK FISHING 290 - DARK GREY



#### A-AA310098M

Type of Floor: X-stitched air floor  
Color: Dark Grey  
Fabric: PVC

Bagged Dimensions SKIN: 102 x 56 x 40 (cm)  
Max Load: (lbs)1400 (kg)635  
Max HP (all short shaft): 15  
Max Engine weight: (lbs)132 (kg)60  
Max Persons: 4  
Numbers of air chambers: 3+keel+floor  
Length: (ft)9 ft 2 in (cm)290  
Width: (ft)5 ft (cm)154  
Weight: (lbs)83 (cm) 43

Mercury Branded

### AIR DECK FISHING 320 - DARK GREY

#### A-AA340113M

Type of Floor: X-stitched air floor  
Color: Dark Grey  
Material: PVC

Bagged Dimensions SKIN: 102 x 56 x 46(cm)  
Max Load: (lbs)1477 (kg)670  
Max HP (all short shaft):20  
Max Engine weight: (lbs)132 (kg)60  
Max Persons: 5  
Numbers of air chambers: 3+keel+floor  
Length: (ft)10 ft 6 in (cm)320  
Width: (ft)5 ft (cm)154  
Weight: (lbs)90 (kg)49

Mercury Branded

**ADVENTURE SERIES**

**250 ADVENTURE SPORT - DARK GREEN**



**A-AA270105M**

Type of Floor: FRP- Fiberglass Reinforced Polymer  
 Color: Dark Green  
 Fabric: PVC  
 Bagged Dimensions SKIN: 102 x 56 x 35(cm)  
 Max Load: (lbs)992 (kg)450  
 Max HP (all short shaft): 8  
 Max Engine weight: (lbs)99  
 Max Persons: 4  
 Numbers of air chambers: 3+keel  
 Length: (ft)8 ft 4in (cm)253  
 Width: (ft)5 ft (cm)154  
 Weight: (lbs)101 (kg)52  
 Mercury Branded

**290 ADVENTURE SPORT - DARK GREEN**

**A-AA310102M**

Type of Floor: FRP- Fiberglass Reinforced Polymer  
 Color: Dark Green  
 Fabric: PVC  
 Bagged Dimensions SKIN: 102 x 56 x 40(cm)  
 Max Load: (lbs)1146 (kg)520  
 Max HP (all short shaft): 15  
 Max Engine weight: (lbs)132 (kg)60  
 Max Persons: 4  
 Numbers of air chambers: 3+keel  
 Length: (ft)9 ft 6 in (cm)290  
 Width: (ft)5 ft (cm)154  
 Weight: (lbs)112 (kg)57  
 Mercury Branded

**320 ADVENTURE SPORT - DARK GREEN**

**A-AA340112M**

Type of Floor: FRP- Fiberglass Reinforced Polymer  
 Color: Dark Green  
 Fabric: PVC  
 Bagged Dimensions SKIN: 102 x 56 x 46(cm)  
 Max Load: (lbs)1257 (kg)570  
 Max HP (all short shaft): 20  
 Max Engine weight: (lbs)132 (kg)60  
 Max Persons: 5  
 Numbers of air chambers: 3+keel  
 Length: (ft)10 ft 6 in (cm)320  
 Width: (ft)5 ft (cm)154  
 Weight: (lbs)124 (kg)62  
 Mercury Branded

**ADVENTURE 365 XS - DARK GREEN**

**A-AA380086M**

Type of Floor: Aluminum & FRP non-skid  
 Color: Dark Green  
 Fabric: PVC  
 Bagged Dimensions SKIN: 128 x 62 x 35(cm)  
 Bagged Floor: 108 x 65 x 12(cm)  
 Max Load: (lbs)1653 (kg)750  
 Max HP (all short shaft): 25  
 Max Engine weight: (lbs)187 (kg)85  
 Max Persons: 6  
 Numbers of air chambers: 3+keel  
 Length: (ft)11 ft 7 in (cm)365  
 Width: (ft)5 ft 9 in (cm)175  
 Weight: (lbs)232 (kg)105  
 Mercury Branded

**OCEAN RUNNER SERIES**

**290 OCEAN RUNNER RIB - LIGHT GREY**



**A-AA300046M**

Type of Floor: Non-skid fiberglass  
 Color: Light Grey  
 Fabric: PVC  
 Bagged Dimensions SKIN: 245 x 115 x 50(cm)  
 Max Load: (lbs)926 (kg)420  
 Max HP (all short shaft): 10  
 Max Engine weight: (lbs)99 (kg)45  
 Max Persons: 4  
 Numbers of air chambers: 3  
 Length: (ft)9 ft 6 in (cm)290  
 Width: (ft)5 ft 4 in (cm)162  
 Weight: (lbs)131 (kg)65  
 Mercury Branded

**340 OCEAN RUNNER RIB - LIGHT GREY**

**A-AA350041M**

Type of Floor: Non-skid fiberglass  
 Color: Light Grey  
 Fabric: PVC  
 Bagged Dimensions SKIN: 270 x 120 x 50(cm)  
 Max Load: (lbs)1135 (kg)515  
 Max HP (all short shaft): 25  
 Max Engine weight: (lbs)187 (kg)85  
 Max Persons: 5  
 Numbers of air chambers: 3  
 Length: (ft)11 ft 2 in (cm)340  
 Width: (ft)5 ft 9 in (cm)176  
 Weight: (lbs)184 (kg)89  
 Mercury Branded

# INFLATABLE BOATS

## 420 OCEAN RUNNER RIB - LIGHT GREY

**A-AA410012M**

Type of Floor: Non-skid fiberglass  
Color: Light Grey  
Fabric: PVC

Bagged Dimensions SKIN: 320 x 110 x 65(cm)  
Max Load: (lbs)1764 (kg)800  
Max HP: 40  
Max Engine weight: (lbs)243 (kg)110  
Max Persons: 7  
Numbers of air chambers: 4  
Length: (ft)13 ft 9 in (cm)420  
Width: (ft)5 ft 11 in (cm)180  
Weight: (lbs)233 (kg)113

Mercury Branded

## 470 HEAVY DUTY - RED

**A-AA470023M**

Type of Floor: Aluminum & FRP non-skid  
Color: Red  
Fabric: PVC

Bagged Dimensions SKIN: 156 x 75 x 45(cm)  
Bagged Floor: 126 x 71 x 20(cm)  
Max Load: (lbs)2646 (kg)1200  
Max HP (all short shaft): 55  
Max Engine weight: (lbs)287 (kg)130  
Max Persons: 10  
Numbers of air chambers: 5+keel  
Length (ft): 15 ft 5 in (cm)470  
Width: (ft)7 ft 1 in (cm)216  
Weight: (lbs)380 (kg)176

Mercury Branded

## HEAVY DUTY SERIES

### 365 HEAVY DUTY - RED



**A-AA380087M**

Type of Floor: Aluminum & FRP non-skid  
Color: Red  
Fabric: PVC

Bagged Dimensions SKIN:(cm)128 x 62 x 35  
Bagged Floor: 108 x 64 x 12  
Max Load: (lbs)1653 (kg)750  
Max HP (all short shaft): 25  
Max Engine weight: (lbs)187 (kg)85  
Max Persons: 6  
Numbers of air chambers: 3+keel  
Length: (ft) 12 ft 0 in (cm)365  
Width: (ft) 5 ft 9 in (cm)175  
Weight: (lbs)206 (kg)100

Mercury Branded

### 415 HEAVY DUTY - RED

**A-AA430072M**

Type of Floor: Aluminum & FRP non-skid  
Color: Red  
Fabric: PVC

Bagged Dimensions SKIN: (cm)145 x 65 x 38  
Bagged Floor: (cm)113 x 75 x 12  
Max Load: (lbs)2094 (kg)950  
Max HP (all short shaft): 30  
Max Engine weight: (lbs)187 (kg)85  
Max Persons: 8  
Numbers of air chambers: 3+keel  
Length: (ft)13 ft 7 in (cm)415  
Width: (ft)6 ft 2 in (cm)188  
Weight: (lbs)250 (kg)120

Mercury Branded

## INFLATABLE ACCESSORIES

### 1-PART HYPALON GLUE



**92-891690**

Hypalon 1-part glue to use on Minor repairs.  
Fits all Hypalon fabric based boats.

### HYPALON GLUE KIT



**92-892752**

This is a 2 part quarter liter Hypalon glue kit to be used for installation of all Hypalon parts. Kit includes all proper equipment to prep parts for installation. To be used on all Hypalon Boat product.

### HYPALON REPAIR KIT



**62-896345A01**

Contains both Red and Black fabric to perform repairs to Hypalon Boats.  
Fits 2003 and newer Heavy Duty Hypalon boats.

## 1-PART PVC GLUE



**92-808648**

## 2-PART ADHESIVE



**92-818651A 2**

32 fl oz (946 mL)

## 2-PART ADHESIVE



**92-818651A 3**

4 fl oz (118 mL)

## AIR DECK FLOOR SYSTEM



**62-852871A02**

One-piece design flap.  
Fits 1996-2000 model year QS 270 Sport inflatables

**62-852873A02**

One-piece design flap  
Fits 1996-2000 model year QS 330 Sport inflatables

## SEAT W/BRACKET



**62-811307**

Varnished finish  
Fits QS 270, 300,330 and RL 270 inflatable boats (1995 and below).

## SEAT W/BRACKET



**62-880959**

Adjustable gray wood seat for 200 roll-up model boat  
200 Roll-up 2001 and newer models year boats

## BENCH SEAT-CONSOLE COMFORT



**62-896397005**

PVC fabric  
Color: Ivory with Navy Blue trim.  
(L81.5cm x W34cm)  
For Sport 415 XS, Heavy Duty 415 XS, Heavy Duty 470 XS and Ocean Runner 420 models application.

## SEAT CUSHION



**62-8M0065784**

Fabric: PVC  
Size:(L81.5cm x W 33.5cm x H10cm)  
Color: Ivory with Navy Blue trim.  
Fits seat(896397005)for Sport 415 XS, Heavy Duty 415 XS, Heavy Duty 470 XS and Ocean Runner 420 application.

For more information, please contact your local Mercury, Mariner, MerCruiser or Quicksilver Office.



## SEAT CUSHION-BACK REST



**62-8M0065785**

Fabric: PVC  
 Size: (L80 cm x W27 cm x H5.5 cm)  
 Color: Ivory with Navy Blue trim.  
 Fits seat(896397005)for Sport 415 XS, Heavy Duty 415 XS, Heavy Duty 470 XS and Ocean Runner 420 application.

## BOAT HANDLES



**62-891703**

Hypalon molded lift and carry handle. Can be attached to provide easier lifting and movement. Comes in Black Color.  
 Fits 2003 430 Heavy Duty Hypalon boats.

## BOAT HANDLES



**62-896462**

Hypalon molded lift and carry handle. Can be applied to increase lifting and easy of movement. Comes in Dark Gray color.  
 Fits all Hypalon Air deck model boats 2003 and newer.

## COMBINATION D-RING AND LIFTING HANDLE



**62-809777004**

Lt. gray fabric w/ composite ring  
 For use on Duratex fabric

## HYPALON - MOLDED ROPE HOLDERS



**62-896457**

Molded gray rope holders made of Hypalon material.  
 For use on Hypalon XD fabric

## HYPALON MOLDED D-RINGS



**62-896456**

Large white molded D-rings for Use when towing inflatable boat.  
 For use on Hypalon XD fabric

## LACING CUFF



**62-809107**

Black color  
 For use on Duratex (PVC) fabric

## LACING CUFF



**62-809107 1**

Silver color  
 For use on Duratex (PVC) fabric

**BOATING ACCESSORIES**

**QUICKSILVER OUTBOARD BRIDLE**



**67-88490710**

- 10 foot Poly E bridle
- Breaking strain: 1220 kg
- Heavy duty shackle and pulley system
- Rope Caddie for keeping rope knot free when not in use
- Includes water drainable mesh bag for easy storage

**QUICKSILVER WARRIOR TUBE**



**67-890980**

- Quicksilver 3 person deck tube (196 cm)
- \* Boston valve for fast inflation and deflation.
  - \* Heavy duty nylon cover.
  - \* Quick connect tow hook.
  - \* 6 deluxe handles with neo protectors.

Quicksilver Branded

**BOAT CARE PRODUCT AND ACCESSORIES**

**303 BOAT CARE KIT**



**93-8M0065661**

Promotional kit ideal for using as gift. Includes manufacturer-recommended products for bimini's, covers, dodgers, enclosures, fabric upholstery and carpet, vinyl, isinglass, inflatable boats, fiberglass, rubber, plastics, paint, metal and glass.

Includes 4 bottles of 59ml (Fabric/Vinyl cleaner - Fabric Guard - Aerospace Protectant - Speed Detailer)

**AEROSPACE PROTECTANT**



**8M0060205**

Environmentally friendly. Powerful UV screening protection. Beautiful color-restoring finish. Easy Spray on and wipe dry application.

For vinyl, isinglass, plastic, clear plastic, rubber, fiberglass, and teak, inflatable/RIB boats.

Priced individually, sold @ multiples of 6  
500 ml plastic bottle

**HIGH TECH FABRIC GUARD 303**



**8M0060206**

Provides lasting water repellency and stops leaks. Repels dirt, grease, water and oil-based stains.

950 ml treats 14 till 18m² op canvas.

For Marine Canvas: biminis, covers, dodgers and enclosures.

Priced individually, sold @ multiples of 8  
950 ml plastic bottle

**CONCENTRATED FABRIC/PVC CLEANER 303**



**8M0060207**

Industrial strength concentrate. Removes even the most difficult stains. Perfect to pre-clean canvas prior to "water-proofing".

Safe for vinyl.

For boat and sail cover, enclosures, dodgers and biminis.

Priced individually, sold @ multiples of 8  
950 ml plastic bottle

**For more information, please contact your local Mercury, Mariner, MerCruiser or Quicksilver Office.**

## BOATING ACCESSORIES

### 376 SERIES USCG TYPE A2 FILL HOSE (HARDWALL)



**67-8M9200881**

Connection between deck plate filler to fuel tank • Helical wire allows tight bend radius and extreme flexibility • Flame resistant cover • Hose resistant to gasoline, diesel and alcohol blended fuels • Suitable for non continuous fuel flow • Meets SAE J1527 specifications as required by BIA, NMMA.  
51 mm x 3.8 meter

### BATTERY HOLDER- 24 SERIES



**67-8M9200928**

Quick Disconnect Battery Holders offer the unmatched holding power of 14's metal hold-down rod to metal base-clip connection with the convenience of an adjustable height cross piece which can be disconnected quickly by hand.

### BATTERY HOLDER- 27 SERIES

**67-8M9200929**

Quick Disconnect Battery Holders offer the unmatched holding power of DetMar's metal hold-down rod to metal base-clip connection with the convenience of an adjustable height cross piece which can be disconnected quickly by hand.  
Installation and removal of batteries is easy with the special high impact nylon fasteners which can be tightened by hand. Cannot be over-torqued and will not loosen or vibrate free. Designed for high temperature, corrosive environments.

### BATTERY CHARGING KIT

Image not Available.

**8M0056549**

Kit contains volatge rectifier, wiring and mounting hardware. Used for providing a DC charge to a 12 volt battery.  
Fits Mercury/Mariner 4/5/6hp. FourStroke outboards beginning with serial number 0R411838. Some models may require lighting coils be added. See application chart for specific models.

### BATTERY CHARGING KIT



**83-8M0060278**

Kit contains voltage rectifier and fused wiring.  
Fits older Mariner Models 4A, 5C, 8B, 8K, 9.9C, 15C, 20C, 25C, K25, 28, K40, 40 twin, and various Marathon models (all of Japanese origin). Please use the Electronic Parts Catalog to identify the correct model usage.

## BATTERY CHANGING KIT

### OPTIMATE 4 DUAL BATTERY CHARGER



**67-8M0061065**

New reference for total battery care • Microprocessor-controlled programme • Stylish 2-tone waterproof housing • Additional turbo recovery stage for really badly neglected batteries • LED bar-graph charge current indication • High efficiency, low heat rise • Glide-guide connector contact pin alignment inserts • 0.8A, 7 stages • 10 Status LEDs • 5 Test results.

## PART NUMBER TO PAGE NUMBER

|           |    |           |    |
|-----------|----|-----------|----|
| 15969A13  | 17 | 8M0041426 | 58 |
| 88845A 2  | 12 | 8M0041428 | 58 |
| 804545R99 | 6  | 8M0041430 | 58 |
| 804800R00 | 6  | 8M0042130 | 62 |
| 806351R50 | 13 | 8M0043962 | 25 |
| 809794R97 | 6  | 8M0045344 | 11 |
| 812815R97 | 6  | 8M0047353 | 8  |
| 812817R97 | 6  | 8M0047355 | 8  |
| 823291R94 | 6  | 8M0051059 | 3  |
| 823434R97 | 6  | 8M0051060 | 3  |
| 828813A31 | 2  | 8M0051061 | 3  |
| 841178A05 | 13 | 8M0051063 | 3  |
| 859074B 1 | 46 | 8M0051209 | 7  |
| 859074B 2 | 46 | 8M0052509 | 58 |
| 859074B 3 | 46 | 8M0052744 | 8  |
| 859649A 2 | 24 | 8M0052924 | 4  |
| 859939    | 62 | 8M0052988 | 56 |
| 862264A 7 | 11 | 8M0053636 | 57 |
| 862646    | 53 | 8M0054993 | 51 |
| 862647    | 54 | 8M0055008 | 4  |
| 863660A 2 | 10 | 8M0055012 | 4  |
| 863661A 2 | 10 | 8M0056139 | 51 |
| 863814R06 | 13 | 8M0056140 | 51 |
| 864256R05 | 13 | 8M0056141 | 51 |
| 864626A01 | 10 | 8M0056142 | 51 |
| 864626A02 | 10 | 8M0056145 | 51 |
| 864651A01 | 10 | 8M0056275 | 24 |
| 864652A01 | 10 | 8M0056276 | 24 |
| 865108A02 | 10 | 8M0056277 | 24 |
| 865831T08 | 8  | 8M0056278 | 24 |
| 865833T07 | 8  | 8M0056279 | 24 |
| 865846T02 | 9  | 8M0056547 | 11 |
| 878365R00 | 6  | 8M0056548 | 54 |
| 879172T80 | 8  | 8M0056549 | 72 |
| 879194T17 | 8  | 8M0056619 | 51 |
| 879194T73 | 8  | 8M0056987 | 55 |
| 879194T99 | 8  | 8M0056988 | 56 |
| 879288A06 | 10 | 8M0056994 | 56 |
| 879288T91 | 8  | 8M0057047 | 4  |
| 879355T82 | 8  | 8M0057162 | 63 |
| 879356K01 | 48 | 8M0057383 | 55 |
| 879871 2  | 46 | 8M0057571 | 11 |
| 879871B 1 | 46 | 8M0057572 | 11 |
| 879871B 2 | 46 | 8M0057573 | 11 |
| 879871B 3 | 46 | 8M0057574 | 11 |
| 883710A01 | 57 | 8M0057575 | 11 |
| 883710A02 | 58 | 8M0057576 | 11 |
| 883710A03 | 58 | 8M0057577 | 12 |
| 883894R04 | 6  | 8M0057772 | 15 |
| 891648001 | 57 | 8M0058173 | 56 |
| 891648002 | 57 | 8M0058677 | 15 |
| 896648A09 | 3  | 8M0058944 | 2  |
| 898349A11 | 50 | 8M0059338 | 15 |
| 898349A14 | 50 | 8M0059339 | 15 |
| 8M0041425 | 58 | 8M0059341 | 15 |

For more information, please contact your local Mercury, Mariner, MerCruiser or Quicksilver Office.

# PART NUMBER TO PAGE NUMBER

|              |    |               |    |
|--------------|----|---------------|----|
| 8M0059342    | 16 | A -AA470023M  | 68 |
| 8M0059343    | 15 | QS5004X       | 61 |
| 8M0059344    | 16 | QS5005X       | 61 |
| 8M0059528    | 12 | QS5006X       | 61 |
| 8M0059529    | 48 | QS5007X       | 61 |
| 8M0059530    | 27 | QS5008X       | 61 |
| 8M0059531    | 27 | QS5009X       | 61 |
| 8M0059532    | 55 | QS5010X       | 61 |
| 8M0060147    | 4  | QS5011X       | 61 |
| 8M0060205    | 71 | 6 -6B28002HH  | 7  |
| 8M0060206    | 71 | 11 -8M0056234 | 62 |
| 8M0060207    | 71 | 11 -8M0056235 | 62 |
| 8M0060269    | 4  | 12 -887972    | 62 |
| 8M0061103    | 59 | 12 -888451    | 62 |
| 8M0061721    | 2  | 32 -8M0038468 | 17 |
| 8M0061986    | 63 | 32 -8M0053474 | 52 |
| 8M0062241    | 59 | 32 -8M0053475 | 52 |
| 8M0062583    | 57 | 32 -8M0053476 | 52 |
| 8M0062846    | 14 | 32 -8M0053477 | 52 |
| 8M0062848    | 13 | 32 -8M0053478 | 52 |
| 8M0062849    | 13 | 32 -8M0053479 | 52 |
| 8M0062850    | 13 | 32 -8M0053480 | 52 |
| 8M0063328    | 13 | 32 -8M0053481 | 52 |
| 8M0063432    | 11 | 32 -8M0053482 | 52 |
| 8M0063569    | 63 | 32 -8M0053483 | 52 |
| 8M0064759    | 9  | 32 -8M0053484 | 52 |
| 8M8025983    | 7  | 32 -8M0053485 | 52 |
| 8M8026000    | 7  | 32 -8M0053486 | 52 |
| 8M8027354    | 7  | 32 -8M0053487 | 52 |
| 8M8027372    | 63 | 32 -8M0053488 | 52 |
| A -AA200036M | 64 | 32 -8M0053489 | 52 |
| A -AA220009M | 64 | 32 -8M0053490 | 52 |
| A -AA240098M | 64 | 32 -8M0053491 | 52 |
| A -AA240102M | 65 | 32 -8M0053492 | 52 |
| A -AA240103M | 66 | 32 -8M0062693 | 5  |
| A -AA250023M | 64 | 32 -8M0063663 | 48 |
| A -AA270104M | 65 | 32 -8M8026967 | 17 |
| A -AA270105M | 67 | 33 -8M0057936 | 2  |
| A -AA270108M | 66 | 33 -8M0058932 | 2  |
| A -AA300046M | 67 | 33 -8M0058933 | 2  |
| A -AA310097M | 65 | 33 -8M0058934 | 2  |
| A -AA310098M | 66 | 33 -8M0058935 | 2  |
| A -AA310101M | 66 | 33 -8M0058936 | 2  |
| A -AA310102M | 67 | 35 -879312T25 | 17 |
| A -AA340112M | 67 | 35 -8M0046336 | 11 |
| A -AA340113M | 66 | 35 -8M0050833 | 7  |
| A -AA340114M | 65 | 35 -8M0060041 | 17 |
| A -AA340116M | 66 | 37 -8M0035724 | 56 |
| A -AA350041M | 67 | 45 -864286A 1 | 11 |
| A -AA380086M | 67 | 46 -8M0063542 | 12 |
| A -AA380087M | 68 | 47 -8M0061756 | 5  |
| A -AA380090M | 65 | 48 -8M0063951 | 62 |
| A -AA410012M | 68 | 48 -8M0063952 | 62 |
| A -AA430072M | 68 | 48 -8M8026390 | 61 |
| A -AA430074M | 65 | 48 -8M8026400 | 61 |



## PART NUMBER TO PAGE NUMBER

|               |    |               |    |
|---------------|----|---------------|----|
| 48 -8M8026410 | 61 | 78 -8M0059248 | 9  |
| 48 -8M8026420 | 61 | 78 -8M0059257 | 9  |
| 48 -8M8026430 | 61 | 78 -8M0059259 | 8  |
| 48 -8M8026440 | 61 | 78 -8M0059270 | 9  |
| 48 -8M8026470 | 61 | 78 -8M0059272 | 9  |
| 48 -8M8026480 | 61 | 78 -8M0059274 | 9  |
| 48 -8M8026555 | 60 | 78 -8M0059346 | 9  |
| 48 -8M8026570 | 60 | 78 -8M0059348 | 9  |
| 48 -8M8026580 | 60 | 78 -8M0059350 | 9  |
| 48 -8M8026590 | 60 | 78 -8M0059352 | 9  |
| 48 -8M8026600 | 60 | 78 -8M0059354 | 9  |
| 48 -8M8026625 | 60 | 78 -8M0059356 | 9  |
| 48 -8M8026630 | 60 | 78 -8M0059358 | 9  |
| 48 -8M8026635 | 60 | 78 -8M0059360 | 9  |
| 48 -8M8026640 | 60 | 78 -8M0059363 | 9  |
| 48 -8M8026650 | 60 | 78 -8M0059364 | 9  |
| 48 -8M8026655 | 60 | 78 -8M0059366 | 9  |
| 49 -8M8026560 | 60 | 78 -8M0059368 | 9  |
| 54 -888988019 | 5  | 79 -879169K13 | 27 |
| 56 -820386A85 | 47 | 79 -879169K14 | 27 |
| 61 -841017R51 | 6  | 79 -879896K19 | 26 |
| 62 -809107    | 70 | 79 -879896K21 | 26 |
| 62 -809107 1  | 70 | 79 -879903K 1 | 31 |
| 62 -809777004 | 70 | 79 -879903K31 | 31 |
| 62 -811307    | 69 | 79 -879904K 1 | 31 |
| 62 -852871A02 | 69 | 79 -879904K31 | 32 |
| 62 -852873A02 | 69 | 79 -879905K 1 | 32 |
| 62 -880959    | 69 | 79 -879905K31 | 32 |
| 62 -891703    | 70 | 79 -879906K 1 | 32 |
| 62 -896345A01 | 68 | 79 -879907K 1 | 32 |
| 62 -896397005 | 69 | 79 -879908K 1 | 32 |
| 62 -896456    | 70 | 79 -879908K31 | 33 |
| 62 -896457    | 70 | 79 -879909K 1 | 33 |
| 62 -896462    | 70 | 79 -879910K 1 | 33 |
| 62 -8M0065784 | 69 | 79 -879910K31 | 33 |
| 62 -8M0065785 | 70 | 79 -879911K 1 | 33 |
| 64 -802894A12 | 53 | 79 -879911K31 | 33 |
| 64 -802894A13 | 53 | 79 -879912K 1 | 34 |
| 64 -802894A14 | 53 | 79 -879912K31 | 34 |
| 64 -802894A15 | 53 | 79 -879913K 1 | 34 |
| 64 -802894A16 | 53 | 79 -879914K 1 | 34 |
| 64 -8M0063473 | 53 | 79 -879914K31 | 34 |
| 64 -8M0063474 | 53 | 79 -879915K 1 | 34 |
| 64 -8M0063475 | 53 | 79 -879915K31 | 35 |
| 64 -8M0063476 | 53 | 79 -879916K 1 | 35 |
| 64 -8M0063477 | 53 | 79 -879916K31 | 35 |
| 67 -879349001 | 4  | 79 -879917K 1 | 35 |
| 67 -879349002 | 4  | 79 -879918K 1 | 35 |
| 67 -88490710  | 71 | 79 -879918K31 | 35 |
| 67 -890980    | 71 | 79 -879919K 1 | 36 |
| 67 -8M0061065 | 72 | 79 -879920K 1 | 36 |
| 67 -8M0064433 | 4  | 79 -879920K31 | 36 |
| 67 -8M9200881 | 72 | 79 -879921K 1 | 36 |
| 67 -8M9200928 | 72 | 79 -879921K31 | 36 |
| 67 -8M9200929 | 72 | 79 -879922K 1 | 36 |

**For more information, please contact your local Mercury, Mariner, MerCruiser or Quicksilver Office.**

## PART NUMBER TO PAGE NUMBER

|               |    |               |    |
|---------------|----|---------------|----|
| 79 -879923K 1 | 37 | 79 -8M0052856 | 39 |
| 79 -879924K 1 | 37 | 79 -8M0052857 | 40 |
| 79 -879924K31 | 37 | 79 -8M0052858 | 38 |
| 79 -879941K 1 | 37 | 79 -8M0052863 | 44 |
| 79 -879942K 1 | 37 | 79 -8M0052864 | 41 |
| 79 -879943K 1 | 37 | 79 -8M0052865 | 43 |
| 79 -879944K21 | 38 | 79 -8M0052866 | 43 |
| 79 -879945K 1 | 38 | 79 -8M0052867 | 41 |
| 79 -879946K 1 | 38 | 79 -8M0052868 | 41 |
| 79 -889222B21 | 29 | 79 -8M0052869 | 42 |
| 79 -889222B22 | 29 | 79 -8M0052870 | 44 |
| 79 -889222B24 | 29 | 79 -8M0052871 | 41 |
| 79 -889222K24 | 29 | 79 -8M0052872 | 44 |
| 79 -889223B21 | 30 | 79 -8M0052873 | 42 |
| 79 -889223B22 | 30 | 79 -8M0052874 | 40 |
| 79 -889223B23 | 31 | 79 -8M0052875 | 39 |
| 79 -889223B24 | 31 | 79 -8M0052876 | 39 |
| 79 -889223K23 | 30 | 79 -8M0052877 | 40 |
| 79 -889223K24 | 31 | 79 -8M0052878 | 40 |
| 79 -889223K27 | 31 | 79 -8M0052879 | 38 |
| 79 -889223K36 | 44 | 79 -8M0054360 | 42 |
| 79 -889223K37 | 44 | 79 -8M0054374 | 43 |
| 79 -892821K02 | 38 | 79 -8M0058806 | 25 |
| 79 -892821K03 | 39 | 79 -8M0058807 | 25 |
| 79 -895285Q41 | 48 | 79 -8M0058808 | 25 |
| 79 -895285Q43 | 48 | 79 -8M0059075 | 29 |
| 79 -895285Q44 | 48 | 79 -8M0059077 | 30 |
| 79 -895285Q48 | 48 | 79 -8M0059079 | 27 |
| 79 -895287Q41 | 49 | 79 -8M0059081 | 30 |
| 79 -895288Q41 | 49 | 79 -8M0059082 | 30 |
| 79 -895288Q42 | 49 | 79 -8M0059085 | 28 |
| 79 -895288Q43 | 49 | 79 -8M0062104 | 46 |
| 79 -895288Q44 | 49 | 79 -8M0062110 | 46 |
| 79 -895288Q45 | 49 | 79 -8M0062111 | 46 |
| 79 -895288Q46 | 49 | 79 -8M0062374 | 25 |
| 79 -895291Q41 | 49 | 79 -8M0062375 | 26 |
| 79 -895292Q41 | 49 | 79 -8M0062377 | 25 |
| 79 -895294Q41 | 50 | 79 -8M0062381 | 28 |
| 79 -895295Q41 | 50 | 79 -8M0062382 | 28 |
| 79 -895297Q41 | 50 | 79 -8M0063153 | 45 |
| 79 -898283K13 | 28 | 79 -8M0063158 | 45 |
| 79 -898283K14 | 28 | 79 -8M0063159 | 45 |
| 79 -8M0052337 | 25 | 79 -8M0063160 | 45 |
| 79 -8M0052842 | 43 | 79 -8M0063203 | 45 |
| 79 -8M0052843 | 40 | 79 -8M0063204 | 45 |
| 79 -8M0052844 | 43 | 79 -8M0063213 | 28 |
| 79 -8M0052845 | 43 | 79 -8M0063214 | 29 |
| 79 -8M0052847 | 41 | 79 -8M0063215 | 29 |
| 79 -8M0052848 | 42 | 79 -8M0063233 | 25 |
| 79 -8M0052849 | 44 | 79 -8M0063240 | 26 |
| 79 -8M0052850 | 41 | 79 -8M0063241 | 26 |
| 79 -8M0052852 | 42 | 79 -8M6001208 | 46 |
| 79 -8M0052853 | 40 | 79 -8M6001270 | 29 |
| 79 -8M0052854 | 39 | 83 -8M0060278 | 72 |
| 79 -8M0052855 | 39 | 84 -879356T01 | 55 |

## PART NUMBER TO PAGE NUMBER

|                      |    |                      |    |
|----------------------|----|----------------------|----|
| 84 -879356T02 .....  | 55 | 1200-8M0057252 ..... | 18 |
| 84 -879968T80 .....  | 47 | 1200-8M0057254 ..... | 18 |
| 84 -879981T80 .....  | 47 | 1200-8M0057255 ..... | 19 |
| 84 -883459T01 .....  | 26 | 1200-8M0057256 ..... | 18 |
| 84 -899785K30 .....  | 27 |                      |    |
| 84 -8M0054183 .....  | 57 |                      |    |
| 84 -8M0054185 .....  | 57 |                      |    |
| 84 -8M0054186 .....  | 57 |                      |    |
| 84 -8M0054187 .....  | 57 |                      |    |
| 84 -8M0056993 .....  | 56 |                      |    |
| 84 -8M0058668 .....  | 54 |                      |    |
| 84 -8M0059938 .....  | 55 |                      |    |
| 87 -859659Q 1 .....  | 55 |                      |    |
| 87 -889305T02 .....  | 25 |                      |    |
| 87 -897716K03 .....  | 54 |                      |    |
| 87 -897716K04 .....  | 54 |                      |    |
| 87 -8M0042301 .....  | 3  |                      |    |
| 88 -832969 2 .....   | 53 |                      |    |
| 88 -832969 30 .....  | 54 |                      |    |
| 88 -832969T05 .....  | 53 |                      |    |
| 88 -832969T25 .....  | 54 |                      |    |
| 88 -8M0058669 .....  | 56 |                      |    |
| 90 -8M0058422 .....  | 63 |                      |    |
| 90 -8M0060049 .....  | 63 |                      |    |
| 90 -8M0060095 .....  | 63 |                      |    |
| 91 -898263A01 .....  | 20 |                      |    |
| 91 -8M0059911 .....  | 7  |                      |    |
| 92 -802878Q20 .....  | 23 |                      |    |
| 92 -802878Q21 .....  | 23 |                      |    |
| 92 -808648 .....     | 69 |                      |    |
| 92 -818651A 2 .....  | 69 |                      |    |
| 92 -818651A 3 .....  | 69 |                      |    |
| 92 -858007Q01 .....  | 20 |                      |    |
| 92 -858078Q01 .....  | 50 |                      |    |
| 92 -858080Q03 .....  | 21 |                      |    |
| 92 -858081Q03 .....  | 20 |                      |    |
| 92 -877770Q 1 .....  | 20 |                      |    |
| 92 -891690 .....     | 68 |                      |    |
| 92 -892752 .....     | 68 |                      |    |
| 92 -8M0047920 .....  | 21 |                      |    |
| 92 -8M0047921 .....  | 22 |                      |    |
| 92 -8M0047922 .....  | 22 |                      |    |
| 92 -8M0058680 .....  | 21 |                      |    |
| 92 -8M0058681 .....  | 22 |                      |    |
| 92 -8M0058682 .....  | 22 |                      |    |
| 92 -8M0058683 .....  | 22 |                      |    |
| 92 -8M0061870 .....  | 20 |                      |    |
| 92 -8M0062765 .....  | 21 |                      |    |
| 93 -8M0065661 .....  | 71 |                      |    |
| 800 -866138A03 ..... | 10 |                      |    |
| 1200-8M0047599 ..... | 17 |                      |    |
| 1200-8M0047603 ..... | 18 |                      |    |
| 1200-8M0047607 ..... | 18 |                      |    |
| 1200-8M0056210 ..... | 19 |                      |    |
| 1200-8M0056211 ..... | 18 |                      |    |

**For more information, please contact your local Mercury, Mariner, MerCruiser or Quicksilver Office.**



**A**

---

|                                         |        |
|-----------------------------------------|--------|
| Adaptor Drive Sleeve . . . . .          | 63     |
| Adaptor Sleeve Drive . . . . .          | 63     |
| Adhesive . . . . .                      | 69     |
| AGI Kit . . . . .                       | 48     |
| Air Deck Floor System . . . . .         | 69     |
| Air System Floor Deck . . . . .         | 69     |
| Aluminum Anode Kit . . . . .            | 15     |
| Analog Clock . . . . .                  | 50     |
| Analog Digital Conversion Kit . . . . . | 24     |
| Analog Fitting Kit . . . . .            | 48     |
| Anode Kit . . . . .                     | 15     |
| Anode Kit Aluminum . . . . .            | 15     |
| Anode Plate . . . . .                   | 15     |
| Anode Power Trim . . . . .              | 15     |
| Anode Side Pocket . . . . .             | 16     |
| Anode Trim Cylinder . . . . .           | 15, 16 |
| Anode, Power Trim . . . . .             | 15     |
| Anodes . . . . .                        | 15, 16 |

**B**

---

|                                |                |
|--------------------------------|----------------|
| Battery Charger . . . . .      | 72             |
| Battery Charging Kit . . . . . | 72             |
| Battery Holder . . . . .       | 72             |
| Bench Seat . . . . .           | 69             |
| Bezel . . . . .                | 46             |
| Bezel Kit . . . . .            | 57             |
| Block Assembly Long . . . . .  | 10, 11, 13, 14 |
| Boat Care Kit . . . . .        | 71             |
| Boost Pump Kit . . . . .       | 11             |
| Bridle Outboard . . . . .      | 71             |

**C**

---

|                                    |    |
|------------------------------------|----|
| Cable . . . . .                    | 58 |
| Cable Rotary Dual System . . . . . | 53 |
| Cable Rotary System Dual . . . . . | 53 |
| Charging Kit Battery . . . . .     | 72 |

|                                         |        |
|-----------------------------------------|--------|
| Cleaner Fabric . . . . .                | 71     |
| Clock . . . . .                         | 50     |
| Combustion chamber cleaner . . . . .    | 21     |
| Console Control Remote Mount . . . . .  | 58     |
| Console Mount Remote Control . . . . .  | 58     |
| Control, Remote . . . . .               | 57, 58 |
| Conversion Kit Analog Digital . . . . . | 24     |
| Conversion Kit Tiller Handle . . . . .  | 3      |
| Coolant Temperature . . . . .           | 44     |
| Cruiselog Gauge . . . . .               | 50     |
| Cylinder . . . . .                      | 50     |
| Cylinder Big Tiller . . . . .           | 2      |
| Cylinder Hydraulic . . . . .            | 51     |

**D**

---

|                                                |    |
|------------------------------------------------|----|
| Decal - Theft . . . . .                        | 56 |
| Deck Fill Oil Kit . . . . .                    | 17 |
| Depth Transducer Transom Mount . . . . .       | 46 |
| Depth/Speed/Temp Transducer Insert - Thru Hull | 46 |
| Digital Analog Conversion Kit . . . . .        | 24 |
| Dinghy 200 . . . . .                           | 64 |
| Docking Station - TDS . . . . .                | 56 |
| D-Ring . . . . .                               | 70 |
| D-Ring Lifting Handle . . . . .                | 70 |
| Drive Adaptor Sleeve . . . . .                 | 63 |
| Drive Sleeve Adaptor . . . . .                 | 63 |
| Driveshaft Extension Kit . . . . .             | 4  |
| Driveshaft Kit . . . . .                       | 11 |
| Dual Cable Rotary System . . . . .             | 53 |
| Dual Engine Synchronizer . . . . .             | 50 |
| Dual Rotary Cable System . . . . .             | 53 |

**E**

---

|                                   |      |
|-----------------------------------|------|
| ECM . . . . .                     | 8, 9 |
| ECM Module . . . . .              | 9    |
| ECO Screen . . . . .              | 25   |
| Elbow Kit, Intermediate . . . . . | 11   |
| Electric Fuel Pump . . . . .      | 7    |



## REFERENCE & INDEX

|                                          |        |
|------------------------------------------|--------|
| Engine and Fuel System Cleaner . . . . . | 22     |
| Engine cleaner . . . . .                 | 21     |
| Engine Flush Kit . . . . .               | 12     |
| Engine SmartCraft Kit . . . . .          | 24     |
| Engine Synchronizer Gauge . . . . .      | 37     |
| Engine Temperature Gauge . . . . .       | 32, 36 |
| Engine treatment . . . . .               | 22     |
| Ethanol treatment . . . . .              | 21     |
| Exhaust Elbow Kit . . . . .              | 11     |
| Extension (Wing) Plate Single . . . . .  | 7      |
| Extension Kit - Driveshaft . . . . .     | 4      |
| Extension Kit Trim Hose . . . . .        | 7      |

### F

|                                         |        |
|-----------------------------------------|--------|
| Fabric Guard . . . . .                  | 71     |
| Fill Hose . . . . .                     | 72     |
| Fill Kit Deck Oil . . . . .             | 17     |
| Filter Fuel Assembly . . . . .          | 7      |
| Filter Fuel Water Separating . . . . .  | 11     |
| Filter Water Separating Fuel . . . . .  | 11     |
| Filter, Water Separating . . . . .      | 11     |
| Floor System Air Deck . . . . .         | 69     |
| Fluid Helm Hydraulic Steering . . . . . | 50     |
| Fluid Hydraulic Helm Steering . . . . . | 50     |
| Flushing attachment . . . . .           | 4      |
| Fob - Controller TDS . . . . .          | 56     |
| Fogging oil . . . . .                   | 20     |
| Fuel additive . . . . .                 | 21, 22 |
| Fuel Assembly Filter . . . . .          | 7      |
| Fuel Assembly Line . . . . .            | 17     |
| Fuel Assembly Line Universal . . . . .  | 17     |
| Fuel Filter . . . . .                   | 17     |
| Fuel Filter Assembly . . . . .          | 7      |
| Fuel Filter Water Separating . . . . .  | 11     |
| Fuel Filter, Water Separating . . . . . | 12     |
| Fuel Flow Gauge . . . . .               | 34     |
| Fuel Gauge . . . . .                    | 49     |
| Fuel injection cleaner . . . . .        | 20     |
| Fuel Line Assembly . . . . .            | 17     |

|                                              |        |
|----------------------------------------------|--------|
| Fuel Line Universal Assembly . . . . .       | 17     |
| Fuel Pump Electric . . . . .                 | 7      |
| Fuel stabilizer . . . . .                    | 22     |
| Fuel System Treatment & Stabilizer . . . . . | 22     |
| Fuel Tank Premium . . . . .                  | 17, 18 |
| Fuel Tank Standard . . . . .                 | 18     |
| Fuel Tank Super . . . . .                    | 18, 19 |
| Fuel treatment . . . . .                     | 21     |
| Fuel Water Separating Filter . . . . .       | 11     |
| Fuse, 10 amp . . . . .                       | 54     |
| Fuse, 2 amp . . . . .                        | 53     |
| Fuse, 25 amp . . . . .                       | 54     |
| Fuse, 5 amp . . . . .                        | 53     |

### G

|                                          |                |
|------------------------------------------|----------------|
| Gateway NMEA 2000 . . . . .              | 25, 26         |
| Gauge 4 IN 1 . . . . .                   | 38             |
| Gauge Clock Analog . . . . .             | 50             |
| Gauge Coolant Temperature . . . . .      | 43, 44         |
| Gauge Cruiselog . . . . .                | 50             |
| Gauge Dual Engine Synchronizer . . . . . | 50             |
| Gauge Engine Synchronizer . . . . .      | 37             |
| Gauge Engine Temperature . . . . .       | 32, 36         |
| Gauge Flow Fuel . . . . .                | 34             |
| Gauge Fuel Flow . . . . .                | 34             |
| Gauge Fuel level . . . . .               | 43             |
| Gauge Fuel Level . . . . .               | 33, 37, 43     |
| Gauge Fuel Level 2 . . . . .             | 43             |
| Gauge Level Fuel . . . . .               | 33, 37         |
| Gauge Level Oil . . . . .                | 33             |
| Gauge Level Waste . . . . .              | 37             |
| Gauge Level Water . . . . .              | 36             |
| Gauge Multifunction . . . . .            | 38             |
| Gauge Oil Level . . . . .                | 33, 42         |
| Gauge Oil Pressure . . . . .             | 35, 42         |
| Gauge Oil Temperature . . . . .          | 32, 33, 42, 43 |
| Gauge Rudder . . . . .                   | 34, 35         |
| Gauge Rudder Angle . . . . .             | 44             |
| Gauge SC1000 Speed . . . . .             | 30             |

|                                        |            |
|----------------------------------------|------------|
| Gauge SC1000 Tach . . . . .            | 28         |
| Gauge Speed . . . . .                  | 29, 30, 40 |
| Gauge Synchronizer Engine . . . . .    | 37         |
| Gauge tach . . . . .                   | 27, 28     |
| Gauge Tach . . . . .                   | 39, 40     |
| Gauge Tachometer . . . . .             | 39         |
| Gauge Trim . . . . .                   | 44         |
| Gauge Voltage . . . . .                | 40, 41     |
| Gauge Waste Level . . . . .            | 41         |
| Gauge Water Level . . . . .            | 41         |
| Gauge Water Pressure . . . . .         | 41         |
| Gear Lube . . . . .                    | 20         |
| Gearhousing Replacement Skeg . . . . . | 4          |
| Glue . . . . .                         | 68         |
| Glue PVC . . . . .                     | 69         |
| GPS Antenna NMEA 2000 . . . . .        | 25         |
| Grommet - Ingress . . . . .            | 57         |

**H**

|                                         |        |
|-----------------------------------------|--------|
| Handle Kit Tiller . . . . .             | 2, 3   |
| Handle Lifting D-Ring . . . . .         | 70     |
| Hardware Bag . . . . .                  | 47     |
| Harness - TDS . . . . .                 | 56     |
| Harness Adapter . . . . .               | 55     |
| Harness Extension . . . . .             | 54     |
| Harness Kit . . . . .                   | 27     |
| Harness MP Alert . . . . .              | 57     |
| Harness SC1000 . . . . .                | 47     |
| Harness SC1000R . . . . .               | 47     |
| Heavy Duty Hydraulic Cylinder . . . . . | 51     |
| Helm Kit Engine . . . . .               | 44, 45 |
| Helm Kit Tach/Speed . . . . .           | 44, 45 |
| Helm Pump . . . . .                     | 51     |
| Helm Tach/Speed Kit . . . . .           | 44, 45 |
| Hose Hydraulic . . . . .                | 52     |
| Hydraulic Helm Fluid Steering . . . . . | 50     |
| Hydraulic Steering Fluid Helm . . . . . | 50     |
| Hypalon Repair Kit . . . . .            | 68     |

**I**

|                                   |    |
|-----------------------------------|----|
| Ignition Keyless System . . . . . | 55 |
| Ignition System Keyless . . . . . | 55 |
| Intermediate Elbow Kit . . . . .  | 11 |

**J**

|                    |   |
|--------------------|---|
| Jet Pump . . . . . | 4 |
|--------------------|---|

**K**

|                                   |    |
|-----------------------------------|----|
| Key Switch . . . . .              | 54 |
| Keyless Ignition System . . . . . | 55 |
| Kit M8 Prop Aerator . . . . .     | 63 |

**L**

|                                 |                |
|---------------------------------|----------------|
| Lacing . . . . .                | 70             |
| Lifting Handle D-Ring . . . . . | 70             |
| Lighting Coil Kit . . . . .     | 54             |
| Long Block . . . . .            | 10, 11, 13, 14 |
| Long Block Assembly . . . . .   | 10, 11, 13, 14 |

**M**

|                                            |      |
|--------------------------------------------|------|
| M8 Prop Aerator Kit . . . . .              | 63   |
| Mechanical Tiller . . . . .                | 2    |
| Module - Controller TDS . . . . .          | 55   |
| Module ECM . . . . .                       | 8, 9 |
| Module MP Alert . . . . .                  | 56   |
| Module PCM . . . . .                       | 8, 9 |
| Monitor SC1000 SmartCraft System . . . . . | 26   |
| MP Alert Light . . . . .                   | 56   |
| MP light . . . . .                         | 56   |
| Multifunction Gauge . . . . .              | 38   |

**N**

|                              |    |
|------------------------------|----|
| NMEA 2000 . . . . .          | 25 |
| Nut Kit Prop . . . . .       | 62 |
| Nut Prop . . . . .           | 62 |
| NXT1 Transom Plate . . . . . | 7  |

## REFERENCE & INDEX

### O

|                                     |        |
|-------------------------------------|--------|
| Oil Deck Fill Kit . . . . .         | 17     |
| Oil Fill Deck Kit . . . . .         | 17     |
| Oil Fill Kit Deck . . . . .         | 17     |
| Oil Filter - Transmission . . . . . | 17     |
| Oil Level Gauge . . . . .           | 42     |
| Oil Pressure Gauge . . . . .        | 35     |
| Oil Temperature Gauge . . . . .     | 32, 33 |

### P

|                                           |       |
|-------------------------------------------|-------|
| PCM Module . . . . .                      | 8, 9  |
| Pickup Seawater . . . . .                 | 12    |
| Power Trim Anode . . . . .                | 15    |
| Power Trim Kit . . . . .                  | 4     |
| Power Trim Kit Switch . . . . .           | 3     |
| Power Trim Kit Tilt . . . . .             | 4     |
| Power Trim Switch Kit . . . . .           | 3     |
| Power Trim Tilt Kit . . . . .             | 4     |
| Power Tune . . . . .                      | 21    |
| Power Tune Cleaner Engine . . . . .       | 21    |
| Powerhead Outboard . . . . .              | 6     |
| Prop Nut . . . . .                        | 62    |
| Prop Nut Kit . . . . .                    | 62    |
| Propeller . . . . .                       | 60–62 |
| Propeller . . . . .                       | 60    |
| Propeller Marketing Publication . . . . . | 63    |
| Protectant . . . . .                      | 71    |
| Publication . . . . .                     | 63    |
| Publication Marketing . . . . .           | 63    |
| Publication Propeller Guide . . . . .     | 63    |
| Pump Fuel Electric . . . . .              | 7     |
| Pump Kit, Boost . . . . .                 | 11    |
| PVC Glue . . . . .                        | 69    |

### Q

|                     |    |
|---------------------|----|
| Quickare . . . . .  | 21 |
| Quickleen . . . . . | 22 |
| Quickstor . . . . . | 22 |

### R

|                                         |        |
|-----------------------------------------|--------|
| Remote Control . . . . .                | 57, 58 |
| Remote Control Console Mount . . . . .  | 58     |
| Remote Control Conversion Kit . . . . . | 59     |
| Remote Dash Pad-SmartTow . . . . .      | 25     |
| Repair Kit Hypalon . . . . .            | 68     |
| Rigging Kit . . . . .                   | 5      |
| Rigging Kit Optimax . . . . .           | 24     |
| Rotary Cable System Dual . . . . .      | 53     |
| Rubber Hub . . . . .                    | 63     |
| Rudder Gauge . . . . .                  | 34, 35 |
| Rust inhibitor . . . . .                | 20     |

### S

|                                            |        |
|--------------------------------------------|--------|
| SC100 Speedometer System Link . . . . .    | 32, 38 |
| SC1000 Harness . . . . .                   | 47     |
| SC1000 System Speedometer . . . . .        | 30     |
| SC1000 System Tachometer . . . . .         | 29     |
| Seat . . . . .                             | 69     |
| Seat Cushion . . . . .                     | 69     |
| Seat Cushion-Back Rest . . . . .           | 70     |
| Seawater Pickup . . . . .                  | 12     |
| Seawater Pump Kit . . . . .                | 12     |
| Silencer Kit . . . . .                     | 11     |
| Single Extension (Wing) Plate . . . . .    | 7      |
| Skeg . . . . .                             | 4      |
| Sleeve Adaptor Drive . . . . .             | 63     |
| Sleeve Drive Adaptor . . . . .             | 63     |
| SmartCraft Engine Kit . . . . .            | 24     |
| SmartCraft Monitor SC1000 System . . . . . | 26     |
| SmartCraft SC1000 System Monitor . . . . . | 26     |
| SmartCraft System Monitor SC1000 . . . . . | 26     |
| Spark Plug . . . . .                       | 2      |
| Speedometer . . . . .                      | 48     |
| Speedometer Link SC100 System . . . . .    | 32, 38 |
| Speedometer SC100 System Link . . . . .    | 32, 38 |
| Speedometer SC1000 System . . . . .        | 30, 31 |
| Spitfire Pontoon Propeller . . . . .       | 60     |

|                                         |    |
|-----------------------------------------|----|
| Spitfire Propeller . . . . .            | 60 |
| Sport 365 XS . . . . .                  | 65 |
| Sport 415 XS . . . . .                  | 65 |
| Steering Fluid Hydraulic Helm . . . . . | 50 |
| Steering Hydraulic Fluid Helm . . . . . | 50 |
| Storage Seal . . . . .                  | 20 |
| Switch Kit Power Trim . . . . .         | 3  |
| Switch Kit Trim Limit . . . . .         | 55 |

**T**

|                                                 |            |
|-------------------------------------------------|------------|
| Tab Trim . . . . .                              | 15         |
| Tab Washer . . . . .                            | 62         |
| Tach/Speed Helm Kit . . . . .                   | 44, 45     |
| Tachometer . . . . .                            | 29         |
| Tachometer Kit . . . . .                        | 28, 29     |
| Tachometer Link SC100 System . . . . .          | 31, 32, 37 |
| Tachometer SC100 System Link . . . . .          | 31, 32, 37 |
| Tachometer SC1000 System . . . . .              | 28, 29     |
| Temp Sensor . . . . .                           | 46         |
| Temperature Gauge . . . . .                     | 49         |
| Theft Deterrent . . . . .                       | 55         |
| Throttle Shift Kit . . . . .                    | 59         |
| Thrust Washer Prop . . . . .                    | 62         |
| Thunderbolt . . . . .                           | 61         |
| Thunderbolt IPS . . . . .                       | 61         |
| Tie Bar . . . . .                               | 53         |
| Tiller Handle Conversion Kit . . . . .          | 3          |
| Tiller Handle Kit . . . . .                     | 2, 3       |
| Tool Installation Seal . . . . .                | 7          |
| Tool Seal Installation . . . . .                | 7          |
| Transmisison Oil Filter . . . . .               | 17         |
| Transom Plate NXT1 . . . . .                    | 7          |
| Trim Cylinder Anode . . . . .                   | 15, 16     |
| Trim Gauge . . . . .                            | 34, 49     |
| Trim Hose Extension Kit . . . . .               | 7          |
| Trim Limit Switch Kit . . . . .                 | 55         |
| Trim Stick Converter . . . . .                  | 48         |
| Trim Tab . . . . .                              | 15         |
| Triple Engine Rigging Kit Zero Effort . . . . . | 7          |

**V**

|                               |    |
|-------------------------------|----|
| Verado paint . . . . .        | 23 |
| Verado silver paint . . . . . | 23 |
| Voltage Gauge . . . . .       | 36 |

**W**

|                                        |            |
|----------------------------------------|------------|
| Washer . . . . .                       | 62         |
| Washer Tab . . . . .                   | 62         |
| Waste Level Gauge . . . . .            | 37         |
| Water Impeller Kit . . . . .           | 5          |
| Water Level Gauge . . . . .            | 36         |
| Water Pressure Gauge . . . . .         | 35, 36, 49 |
| Water Pressure Kit . . . . .           | 27         |
| Water Separating Filter . . . . .      | 11         |
| Water Separating Fuel Filter . . . . . | 11, 12     |
| Water Tube . . . . .                   | 71         |
| Wing Plate Single Extension . . . . .  | 7          |

**Z**

|                                                 |    |
|-------------------------------------------------|----|
| Zero Effort Triple Engine Rigging Kit . . . . . | 7  |
| Zeus Propeller M-Series . . . . .               | 62 |

**For more information, please contact your local Mercury, Mariner, MerCruiser or Quicksilver Office.**

